

Anti-Inversion Block 12-862012-000

Packaging

- 1 ea. 12-862012-000 Anti-Inversion Block
- 1 ea. 12-252600-000 Anti-Inversion Block
- 1 ea. 12-902073-000 Instruction Sheet
- 1 ea. 11-005277-001 Socket Head Hex Cap Screw (5/16 -18 x 3-1/4")
- 1 ea. 11-170009-001 Locknut (5/16-18)

Tools Needed

- Hammer
- 1/4" Allen Wrench
- 1/2" Wrench

Instructions

1. Remove power to the pinsetter.



WARNING! Disconnect the input power connector to the electrical box.

2. Using the 1/4" Allen wrench and 1/2" wrench, remove the 5/16-18 x 1-1/4" hex socket head cap screw (11-005266-001) which holds the trip arm spacer (12-100185-023) to the rake lift arm. Refer to *Figure 1*.

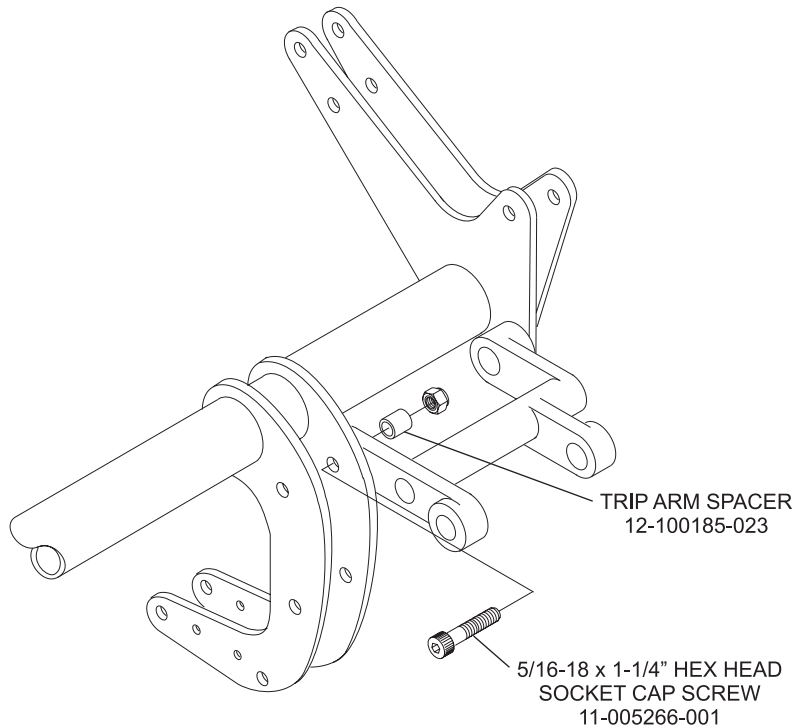


Figure 1

3. From the rear of the pinsetter, face the half circle end of the Anti-Inversion Block toward the front of the pinsetter with the shorter side facing up. Refer to *Figure 2*.

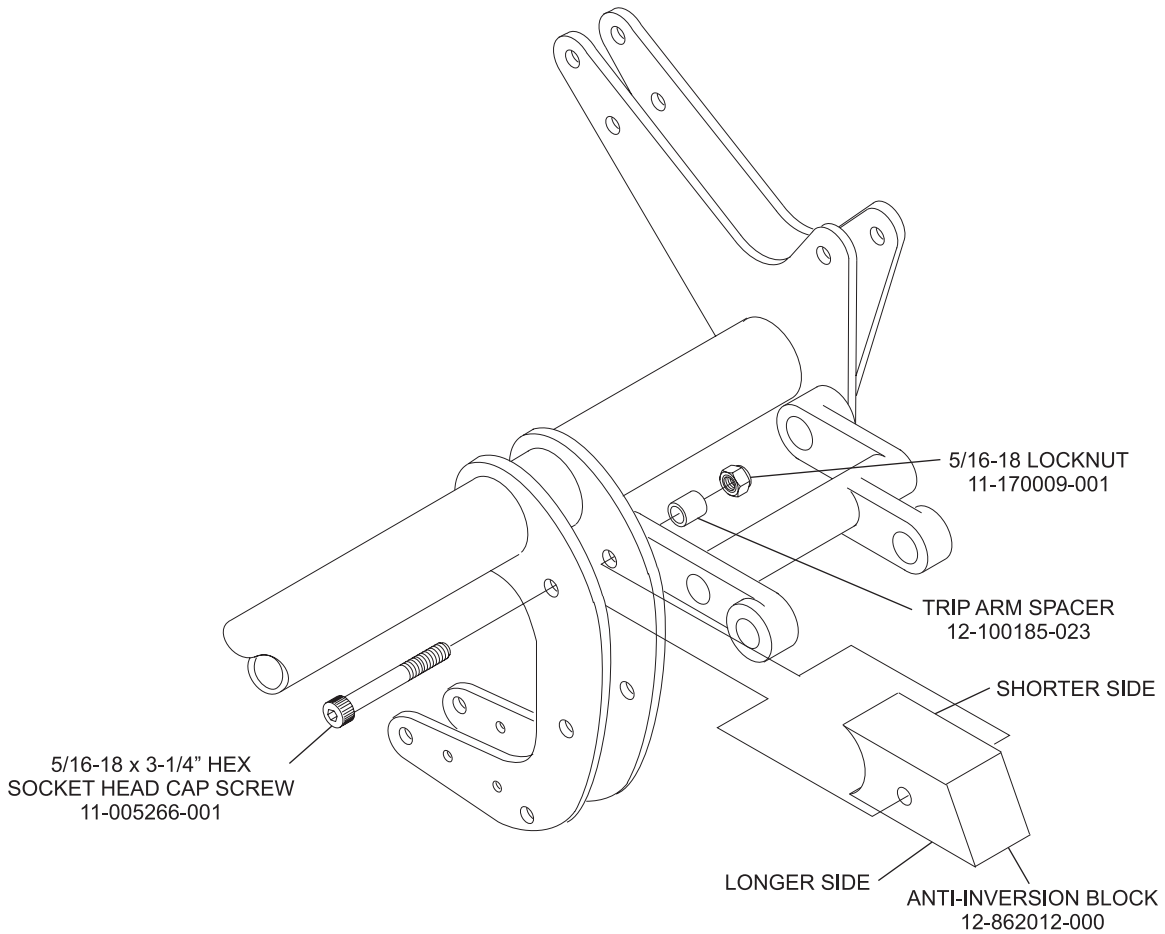


Figure 2

4. Slip the Anti-Inversion Block into place. The half circle end should seat against the tube of the rake lift arm and the holes in the Anti-Inversion Block should line up with the holes in the 2 rake lift arms. Lightly tap into place with a hammer if necessary. Refer to *Figure 2*.
5. Slide the 5/16-18 x 3-1/4" hex socket head cap screw (11-0052667-001) through the rake lift arms, the Anti-Inversion Block and the trip arm spacer. Secure using the 5/16-18 locknut (11-170009-001) provided. Refer to *Figure 2*.