

## **Ball Stop Assembly 12-862011-000 (Quality P/N 58-4168)**

### **Packaging**

1 ea.	12-862011-000	Pkg. Ball Stop w/Hardware
1 ea.	12-862011-001	Ball Stop
3 ea.	11-001280-001	5/16-18 x 4" Hex Head Cap Screw
3 ea.	11-191012-001	5/16 Plain Flat Washer
3 ea.	11-195015-001	5/16 Lockwasher
3 ea.	11-125102-001	5/16-18 Hex Nut
1 ea.	12-900358-000	Instruction Sheet

### **Tools Needed**

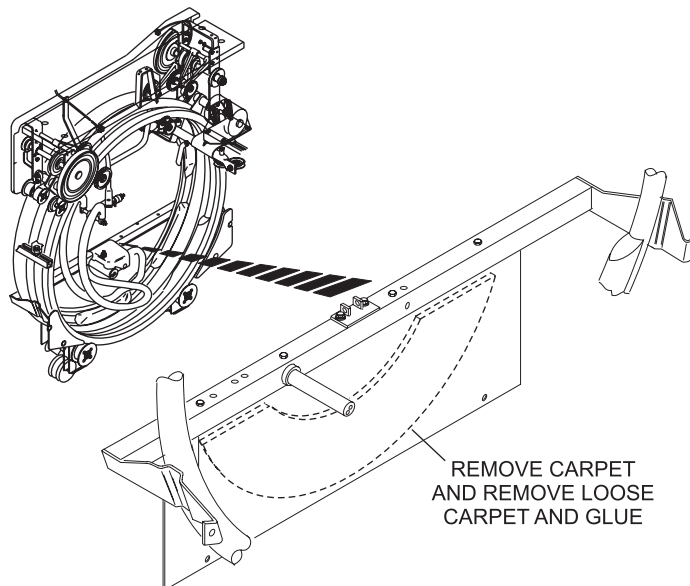
1/2" Open End or Box Wrench  
Socket Wrench with 1/2" Socket  
11/32" Drill Bit  
Hand Drill

### **Installation**



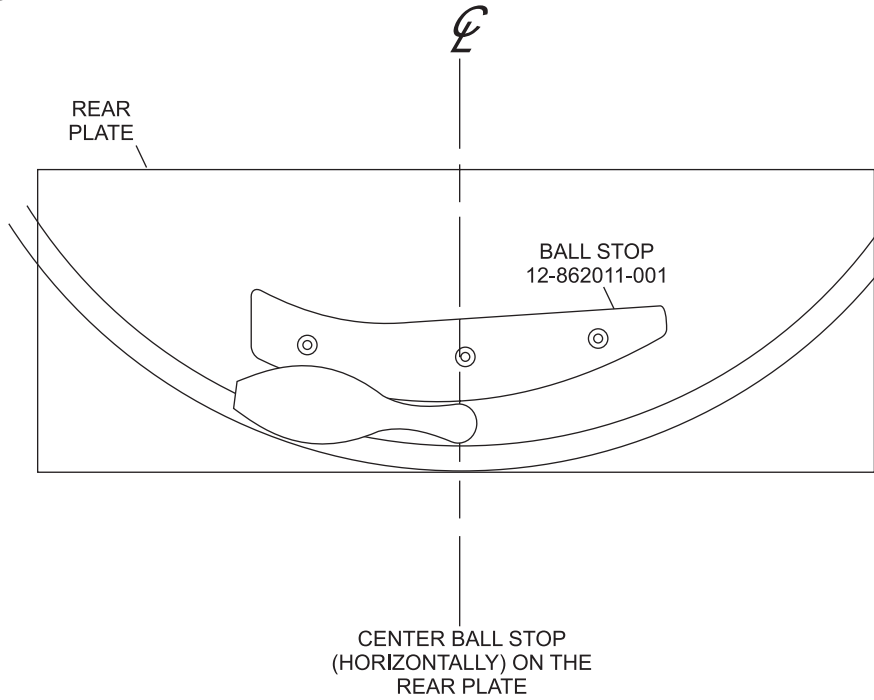
**WARNING!** Remove power to the pinsetter by turning of the main circuit breaker and unplugging the main power cord to the electrical box.

1. Using vise grips, remove the carpet from the rear plate (12-400805-000). Use a wire brush to remove loose carpet and glue. Refer to *Figure 1*



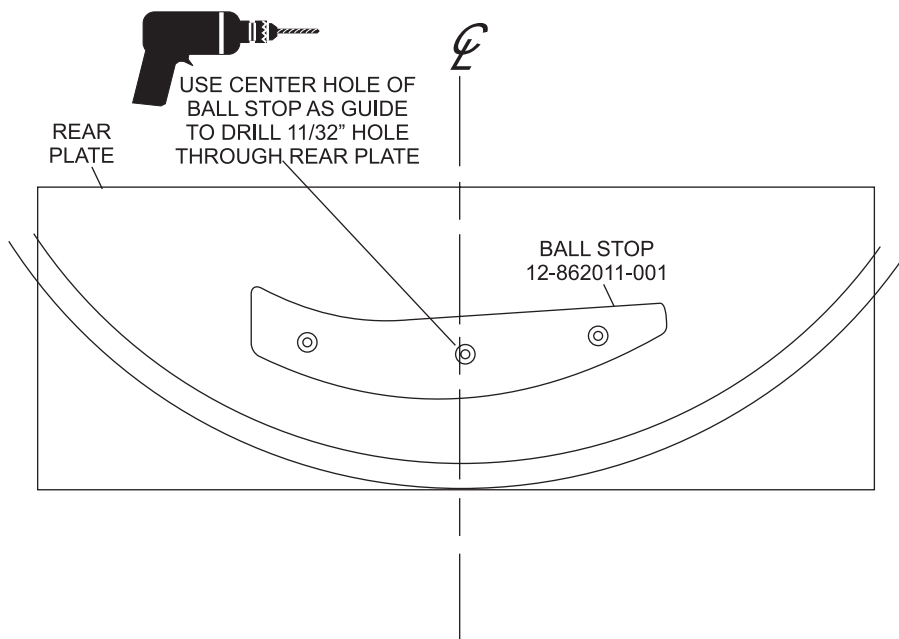
*Figure 1*

2. Position Ball Stop on the pit board against the rear plate centering it left to right. Refer to *Figure 2*.



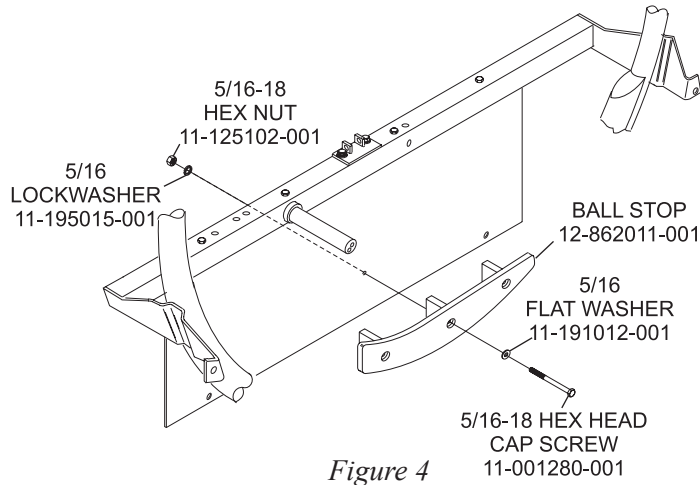
*Figure 2*

3. Raise the ball stop toward the ball lift rods until the head of a pin can freely pass between the pit board and the ball stop. Refer to *Figure 2*.
4. Using the ball stop as a guide, drill an 11/32" hole in the rear plate through the ball stop's center hole. Refer to *Figure 3*.

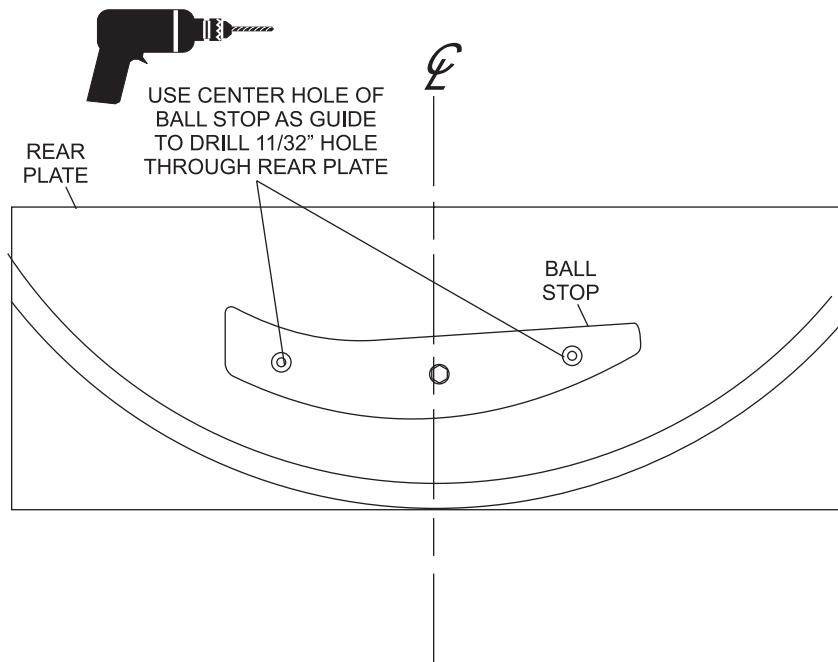


*Figure 3*

- With the washer in the countersink hole, pass the cap screw through the ball stop and rear plate. Secure the cap screw using the lockwasher and hex nut. Slightly snug the hex head cap screw using the wrenches. Refer to *Figure 4*.



- Make sure the ball stop's outer holes are approximately level, drill two 11/32" holes in the rear plate using the ball stop's outer holes as guides. Refer to *Figure 5*.



7. Attach the remaining hardware as in step 5. Refer to Figure 6.

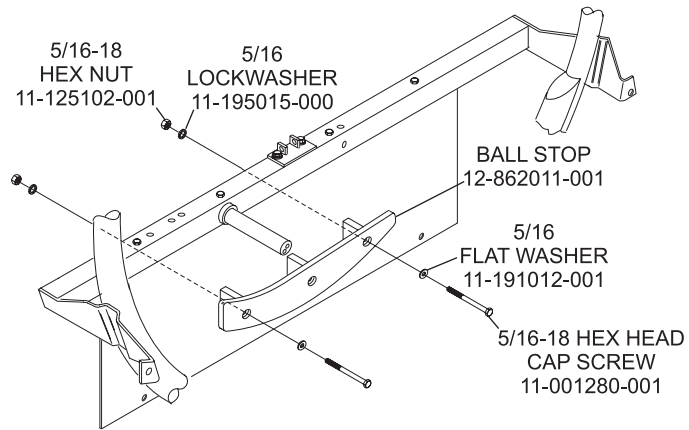


Figure 6

8. Tighten all 3 nuts.

9. Connect the main power cord and turn the main circuit breaker on.