

## Clutch Yoke Screw Conversion 12-862943-000

Fits All Brunswick Pinsetters

### Packaging

#### Item

No.	Qty.	Description
1	1 Ea.	Pin Pivot Spacer
2	1 Ea.	Rod
3	1 Ea.	Compression Spring
4	1 Ea.	Flange Bushing
5	1 Ea.	Flat Washer 5/16
6	1 Ea.	Hex Nut 5/16-24
7	1 Ea.	Jam Nut 5/16-24
8	1 Ea.	Torsion Spring
9	1 Ea.	Dowel Pin 3/16 x 1/2 Long

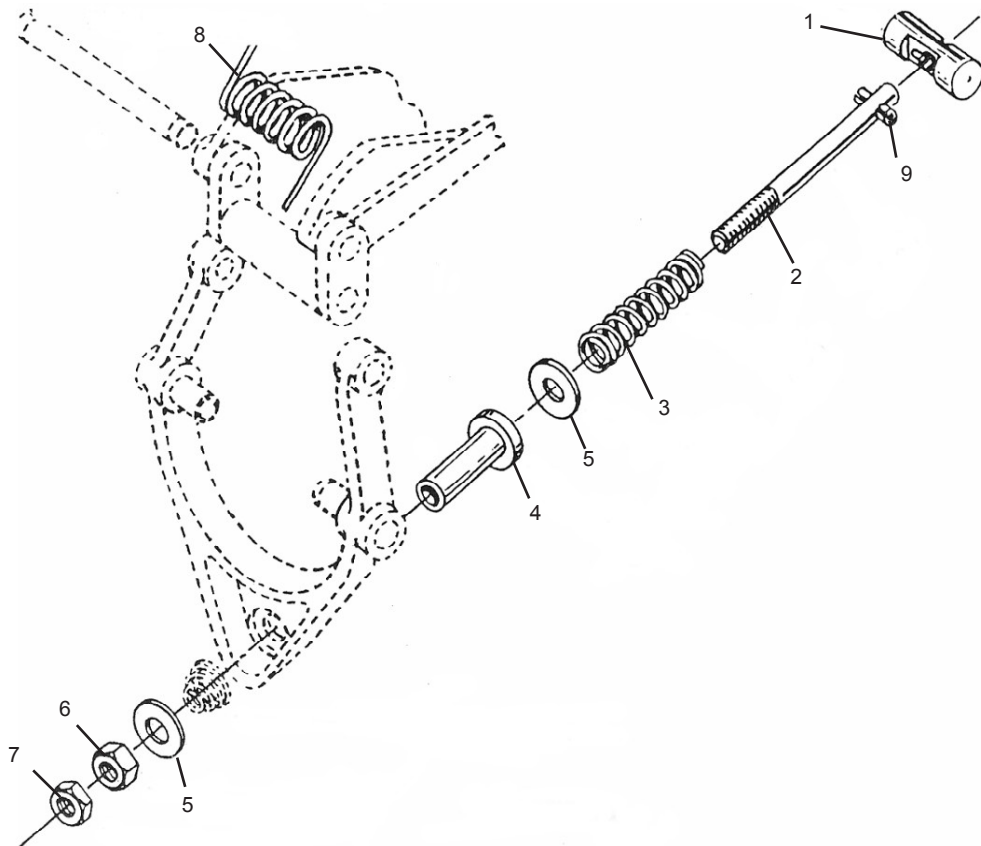


Figure 1

## Installation



**WARNING! Cycle the pinsetter to “0” degrees. Remove all power by throwing main breaker and disconnecting power cord at control box.**

### Breakaway Yoke Installation

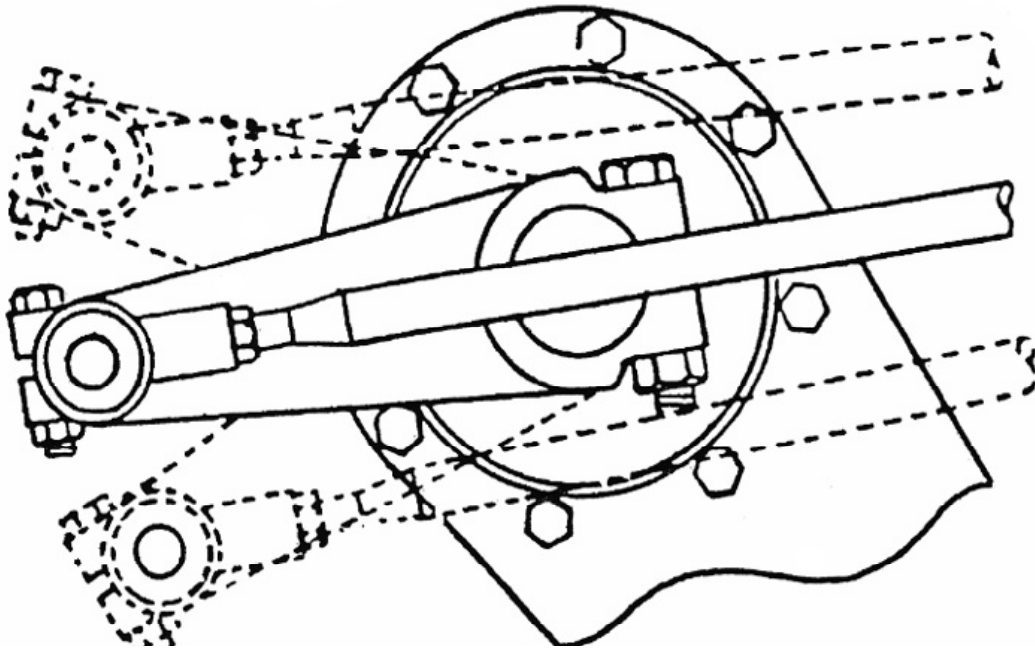
1. Trip the clutch, remove clutch yoke center bolt (P/N 12-100257-000) and pivot space pin (P/N 12-100053-000). Retain spring (P/N 12-100091-000) for future use.
2. Install the Rod Assembly, as shown in *Figure 1*. Start the nuts on rear end of rod. Insert the new pivot spacer pin into cam follower lever.
3. To attach the yoke to the cam follower, simply hold the rod with the roll pin horizontally. Insert into slot in the pin, turn until the roll pin snaps into the keyway on the back of the pin. Tighten nuts leaving 1/2” threaded exposed.
4. Rotate the Bracket Assembly to align Tab hole to the hole in the Elevator Frame. Install the ‘X’ Washer from the Bracket Tab, extending through the pinsetter elevator frame. Secure using ‘X’ Washer on the rear side of the frame.
5. Tighten the 5/16 hardware moderately

### Clutch Lever Activator Arm Torsion Spring Installation

1. Remove long pin (P/N 12-100168-002) from upper yoke pivot far enough to slip the new spring through the pin. Insert the spring onto the pin and rotate so that it pushes against the clutch yoke. Refer to *Figure 1*.
2. Push the pin back into place and replace the retaining ring.

## Gear Box Clutch Lever Adjustment

1. Cycle the pinsetter and allow it to come to a normal “0” degree stop, first ball.
2. Check the position of the rake crank arm and the rake sweep link (See *Figure 2*) the sweep link and crank arm should be in the same horizontal plane with the sweep link, bisect the center of the 4 to 1 shaft.



*Figure 2*

3. If the sweep link is higher or lower than the crank arm, the center yoke ball must be adjusted.
4. To adjust the clutch lever, loosen the outer jam nut on the extreme end of the center yoke bolt. To raise the clutch lever, turn the nut out, to lower the clutch lever, turn the nut in, and tighten the outer jam nut.
5. Cycle the pinsetter and observe whether the crank and link stop are on the same plane. Repeat adjustment, if necessary.

**i** *NOTE: The installation of the provided Torsion Spring eliminates the clutch cam follower adjustment.*

**i** *NOTE: For further adjustment information refer to your Brunswick Pinsetter Service Manual (P/N 12-752828-000).*