

Moving Deck Cam Follower Support Kit 12-862010-000

Packaging

1 ea.	12-862010-000	Cam Follower Support Kit
2 ea.	11-002201-009	Hex Head Screw 3/8-16 x 1"
1 ea.	11-007264-001	Flat Head Socket Cap Screw 5/16-18 x 1"
1 ea.	11-007268-001	Flat Head Socket Cap Screw 5/16-18 x 1.50"
1 ea.	11-125102-001	Hex Nut 5/16-18
2 ea.	11-170011-001	Self Locking Nut
4 ea.	11-191014-001	Flat Washer 3/8
1 ea.	11-195015-001	Lock Washer 5/16
1 ea.	11-190012-001	Flat Washer 5/16
1 ea.	11-194200-000	Spring Washer
1 ea.	12-100119-000	End Coupler
1 ea.	12-100120-000	Support Arm
1 ea.	12-900024-000	Instructions

Tools Required

- 90 Degree Angle Drill with 3/8" Drill Bit
- 3/16" Allen Wrench
- (2) 9/16" Wrenches
- 1/2" Wrench
- Vise Grip
- Pliers
- Shop Towels
- Safety Glasses

Instructions



NOTE: Verify gear box is centered properly on cross frame of the pinsetter to ensure support plate installs correctly.

1. Remove power to pinsetter.



WARNING! Disconnect the input power connector to the electrical box.

2. Manually cycle the pinsetter to 290 degrees.
3. Locate the upper moving deck cable (12-200066-003) and remove it from the upper pulley (12-200055-000) that is located on the left hand deck post.
4. Remove hex nut (11-125104-000) and lock washer (11-195016-000) from the upper part of the Rake Cam Follower (12-252234-000). Then move the Rake Cam Follower towards the front of the pinsetter. This will allow access to the shaft that holds the Moving Deck Cam Follower in place to the gear box of the pinsetter.

5. Remove x-washer (11-230001-001). Remove X-washer pin (12-100166-009) from the upper rear pulley (12-350030-000). Remove the upper Moving Deck Control Cable (12-100280-000) from the rear pulley.
6. Remove the hex head cap screw (11-001266-001) and Lock washer (11-195015-001) that holds the shaft (12-100104-000) to the Gear Box, discard the screw and lock washer. Remove the Moving Deck Cam Follower (12-100313-000) and shaft.
7. Replace hex head cap screw (11-001266-001) with coupler (12-100119-000) and flat head socket cap screw 5/16-18 x 1.50" (11-007268-001) provided in the kit. Secure with flat washer (11-190012-001), lock washer (11-195015-001), and hex nut 5/16-18 (11-125102-001). Refer to *Figure 1*.

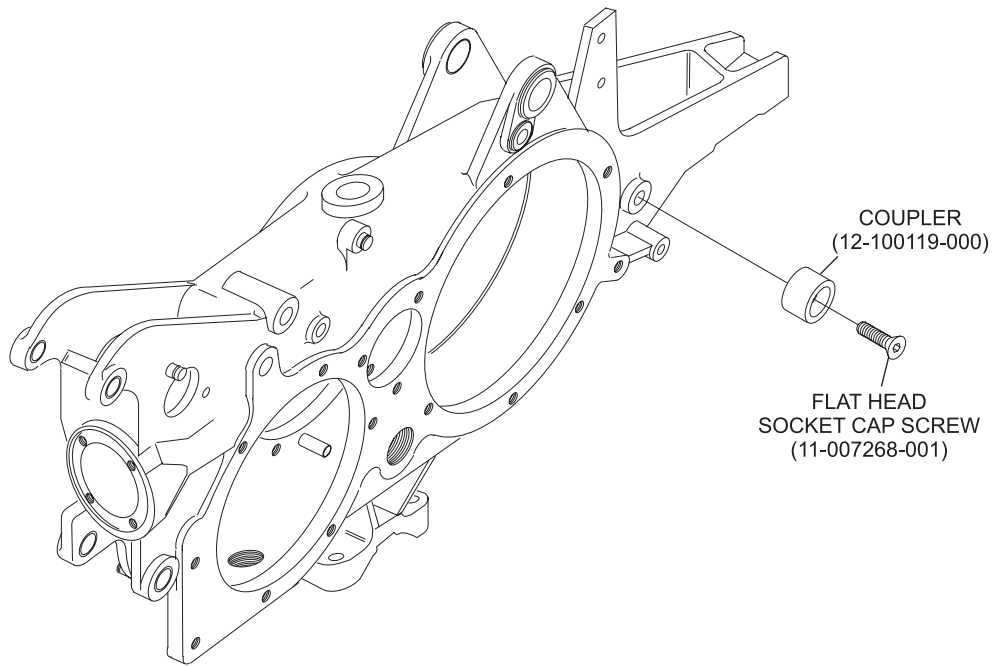


Figure 1

8. Prior to reinstalling the cam follower, lubricate the large bronze bearings (11-421109-000) with oil and also lubricate the roller bearing (11-450301-000) that rides against the moving deck cam follower.
9. Examine shaft (12-100104-000) for wear. If still in usable condition remove retaining ring (11-530027-000) from the shaft. To reinstall, face the threaded end of the shaft toward the 7-pin side of the pinsetter; then slide the Moving Deck Cam Follower, removed in step 6, back onto the shaft. Seat the end of the shaft that the retaining ring was removed from into the end of the coupler.

10. Install the provided support arm (12-100120-000) by placing it against the end of the shaft using socket cap screw 5/16-18 x 1" (11-007264-001) provided in the kit to secure the end of support arm to the end of the shaft. Refer to *Figure 2*.

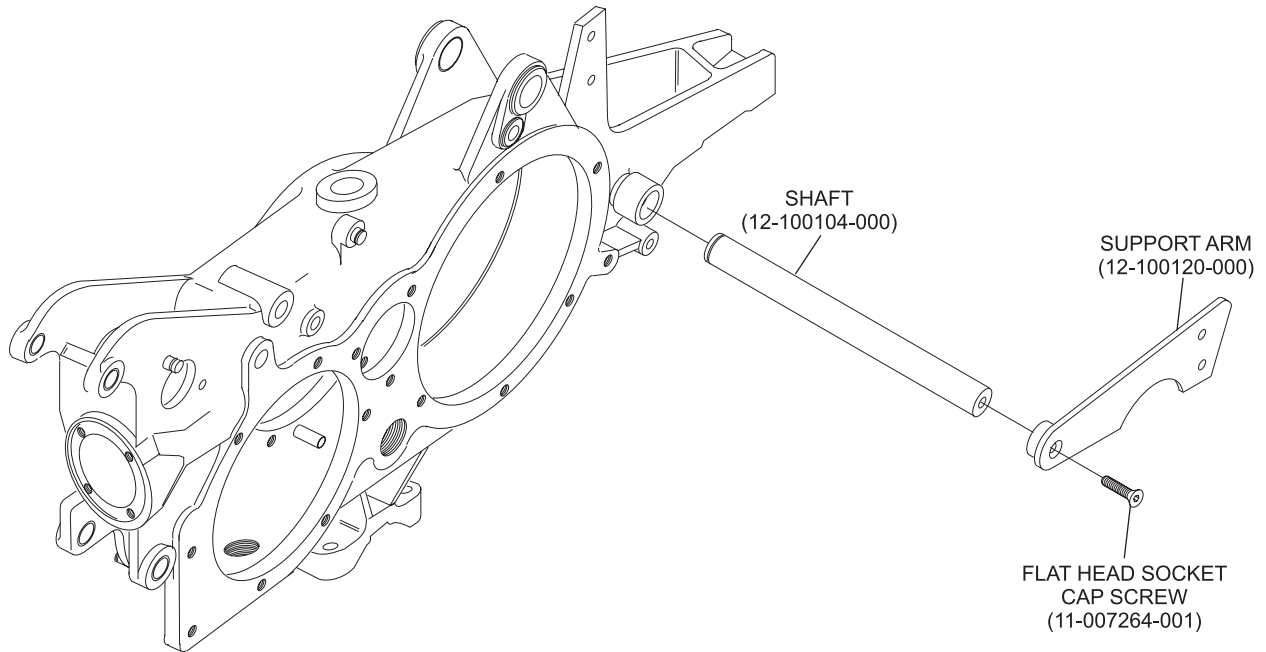


Figure 2

11. Push the support arm downward to cradle the cross frame.

i **NOTE:** Depending on existing welds on the main tube frame, the support arm may not cradle the frame completely. Push down as much as possible.

- Using a vise grip, clamp the support arm firmly to the cross frame “ears” where the Deck Holding Hook Assembly is attached. Using the support arm as a template, carefully drill (2) 3/8” holes into the “ears”. Be sure to keep the drill level and straight. Refer to *Figure 3*.



WARNING! Use safety glasses during drilling procedure.

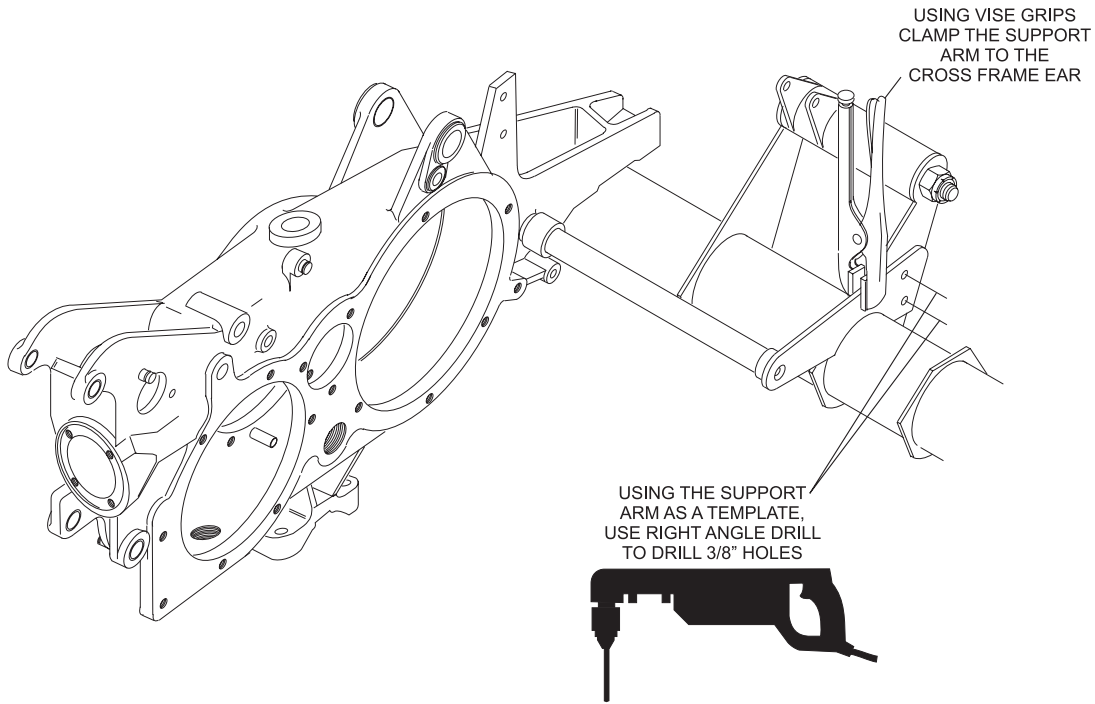


Figure 3

- Secure the support arm to the “ears” with the provided Hex Head Screws 3/8-16 x 1” (11-002201-009), Flat Washers 3/8 (11-191014-001), and Self Locking Nuts (11-170011-001). Refer to *Figure 4*.



NOTE: On die cast gear box housings, there may be a small gap between the rake cam follower and the collar on the support arm. The spring washer provided (11-194200-000) may be slid over the shaft to fill in this gap. Refer to *Figure 4*.

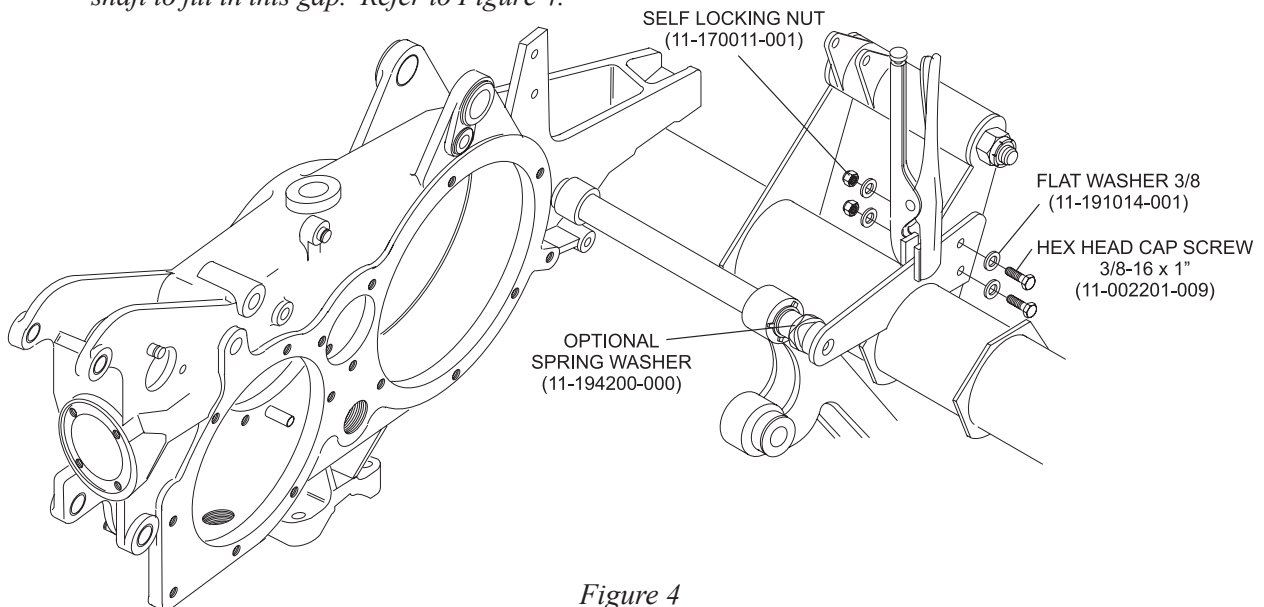


Figure 4

- The cam follower support kit is now installed, restore power to pinsetter and run pinsetter for several cycles to verify correct operation.