

Pit Cushion Linkage Alignment Kit

The Pit Cushion Linkage Alignment Kit is a cross brace designed to align the cushion arms so they are parallel with each other. This helps the pivot linkage sit level and extends the life of the follower links. It also makes pinsetter triggering more sensitive to lighter weight balls.

Packaging

12-862026-000 Pit cushion Alignment Kit contains:

Qty.	Part Number	Description
2	12-252011-000	Alignment Rod Assembly
1	12-252014-000	Coupler Rod
1	12-252017-000	Shaft Collar - 1/2"
2	11-195018-001	Lock Washers

Tools Required

- 3/4" Wrench
- 11/16" Wrench
- 1/8" Allen Wrench

Installation

1. Slide shaft collar onto coupler rod (weld side of spacer). Refer to *Figure 1*.

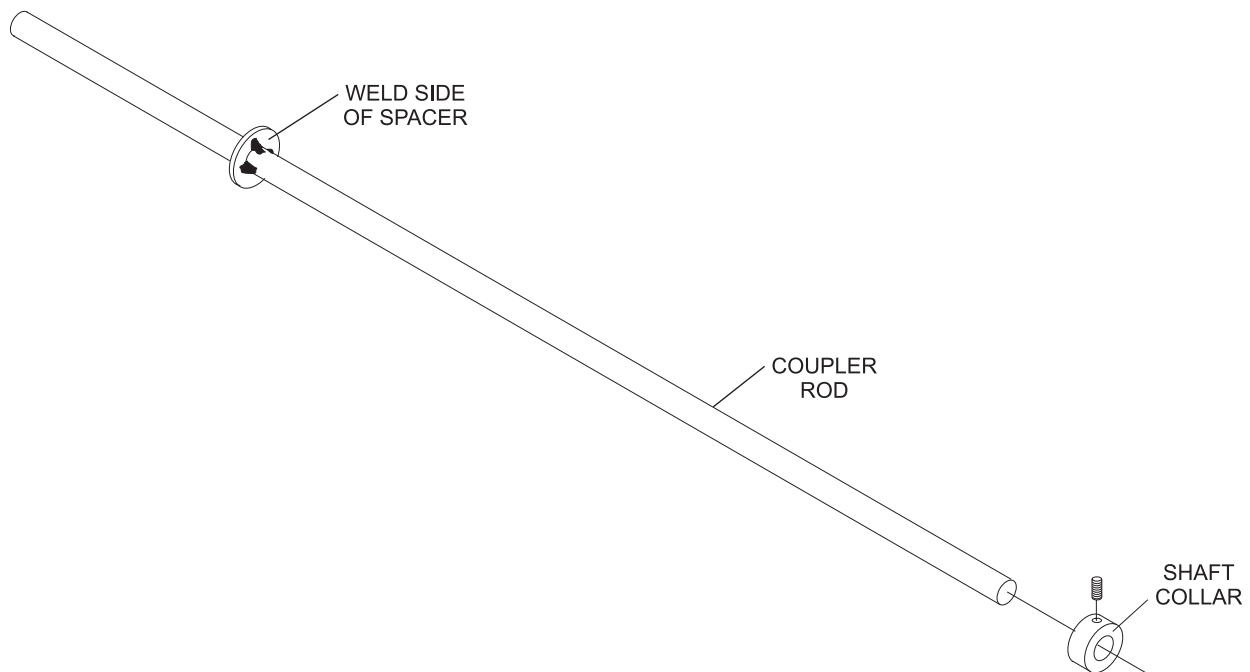


Figure 1

2. Remove the 1/2" locknut (11-121523-000) from the cushion arm screw (12-252352-000). Refer to *Figure 2*.

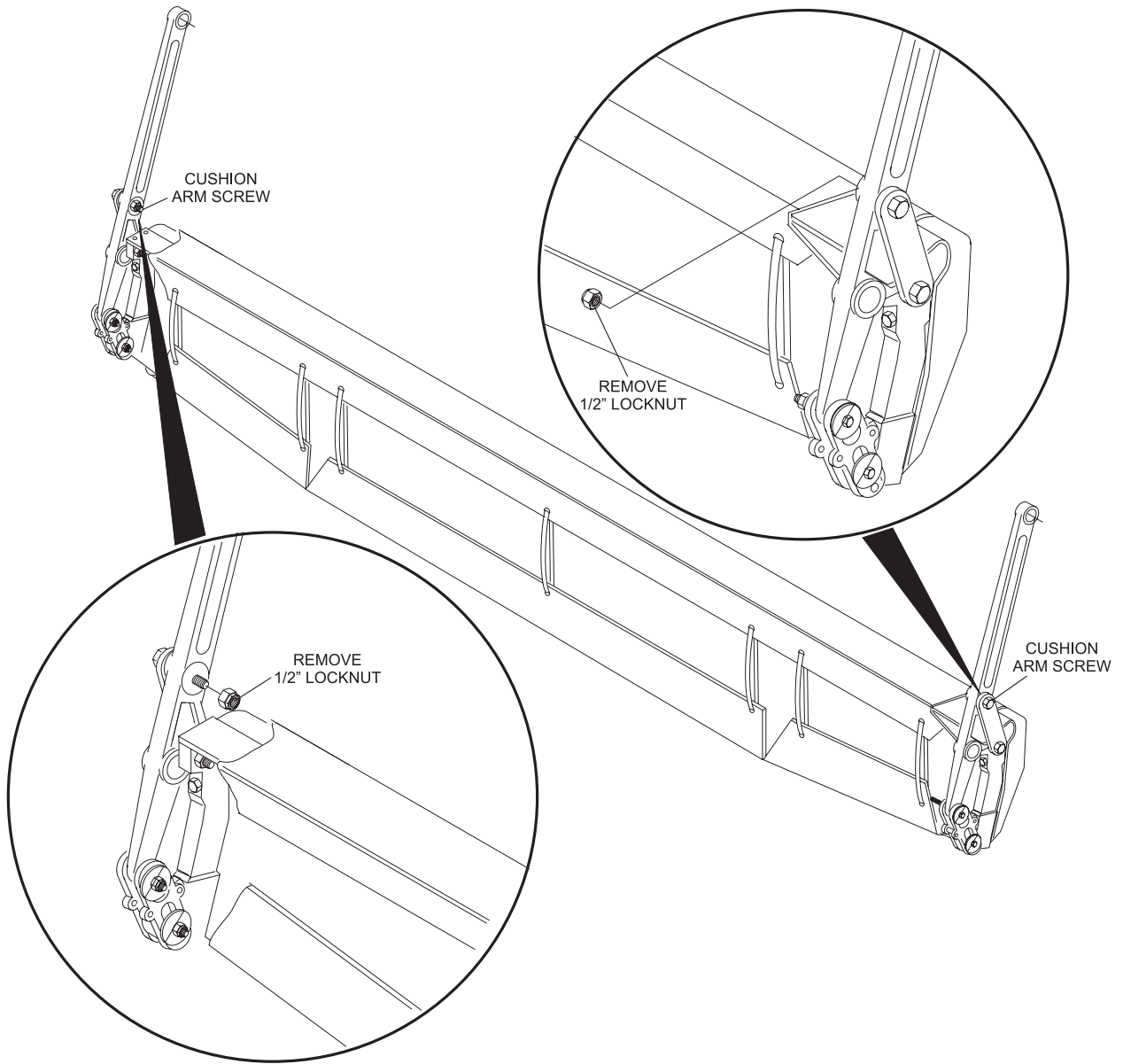


Figure 2

- Place the lockwashers (11-195018-001) onto the cushion arm screw (12-252352-000). Refer to *Figure 3*.

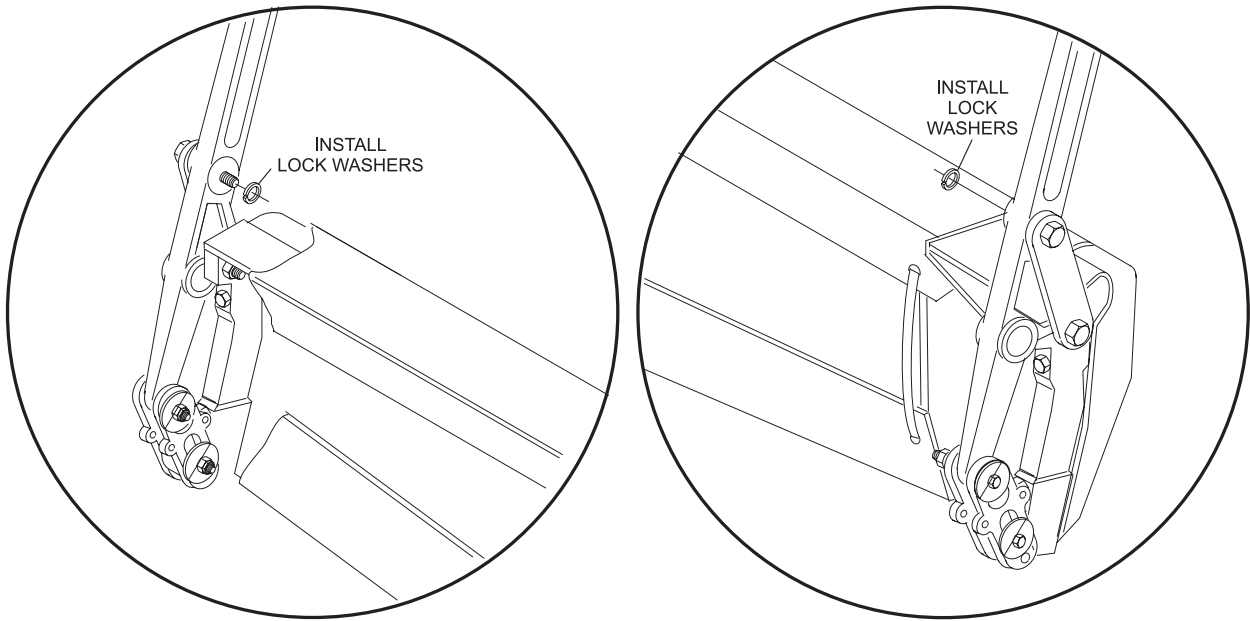


Figure 3

- Install the two alignment rod assemblies onto the cushion arm screws (12-252352-000). Refer to *Figure 4*.

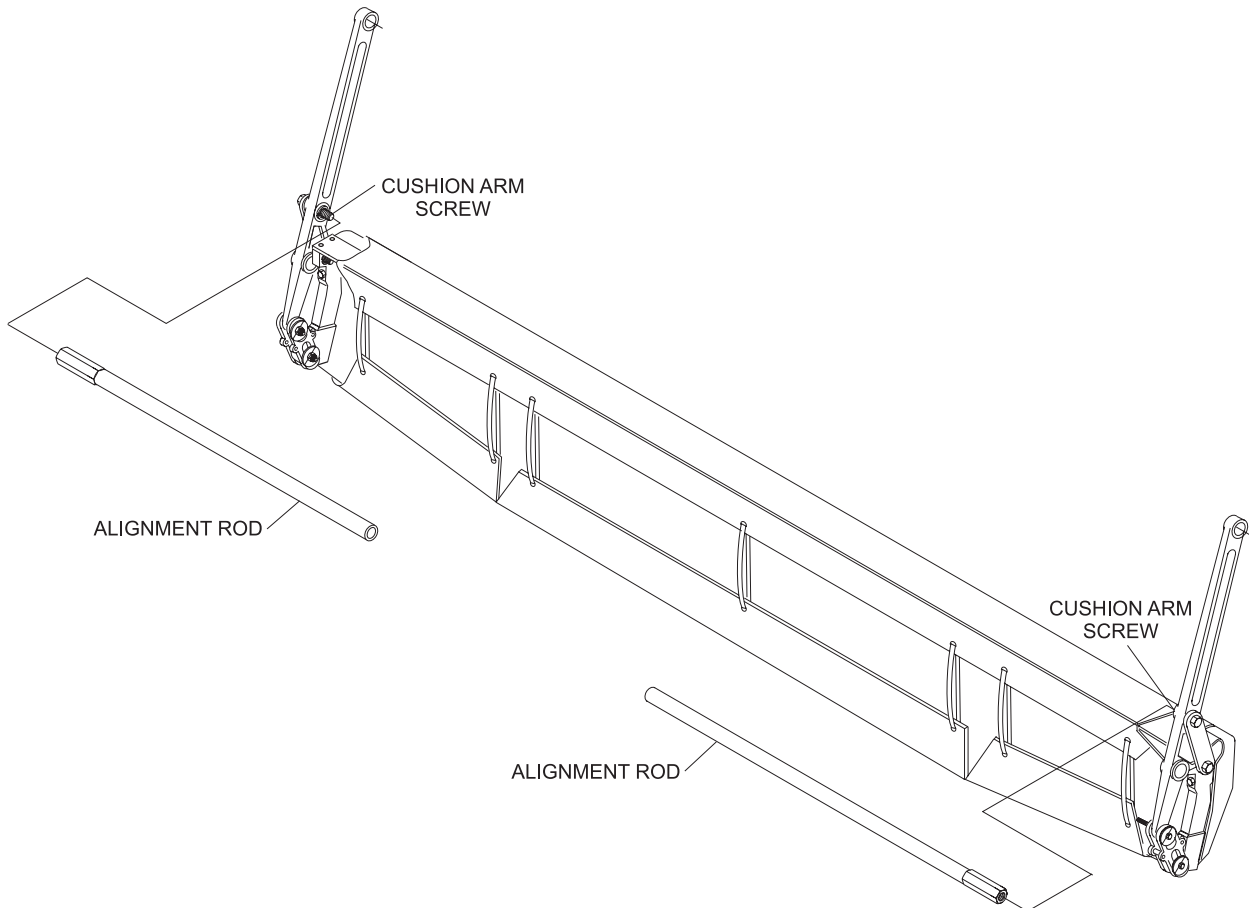


Figure 4

5. Firmly tighten cushion arm screws.
6. The position of the ends of the alignment rods will indicate how far the cushion arms were out of alignment.
7. Insert the coupler rod into the non-bore end of each of the alignment rods. Refer to Figure 5. This will force the cushion arms to be parallel to each other.

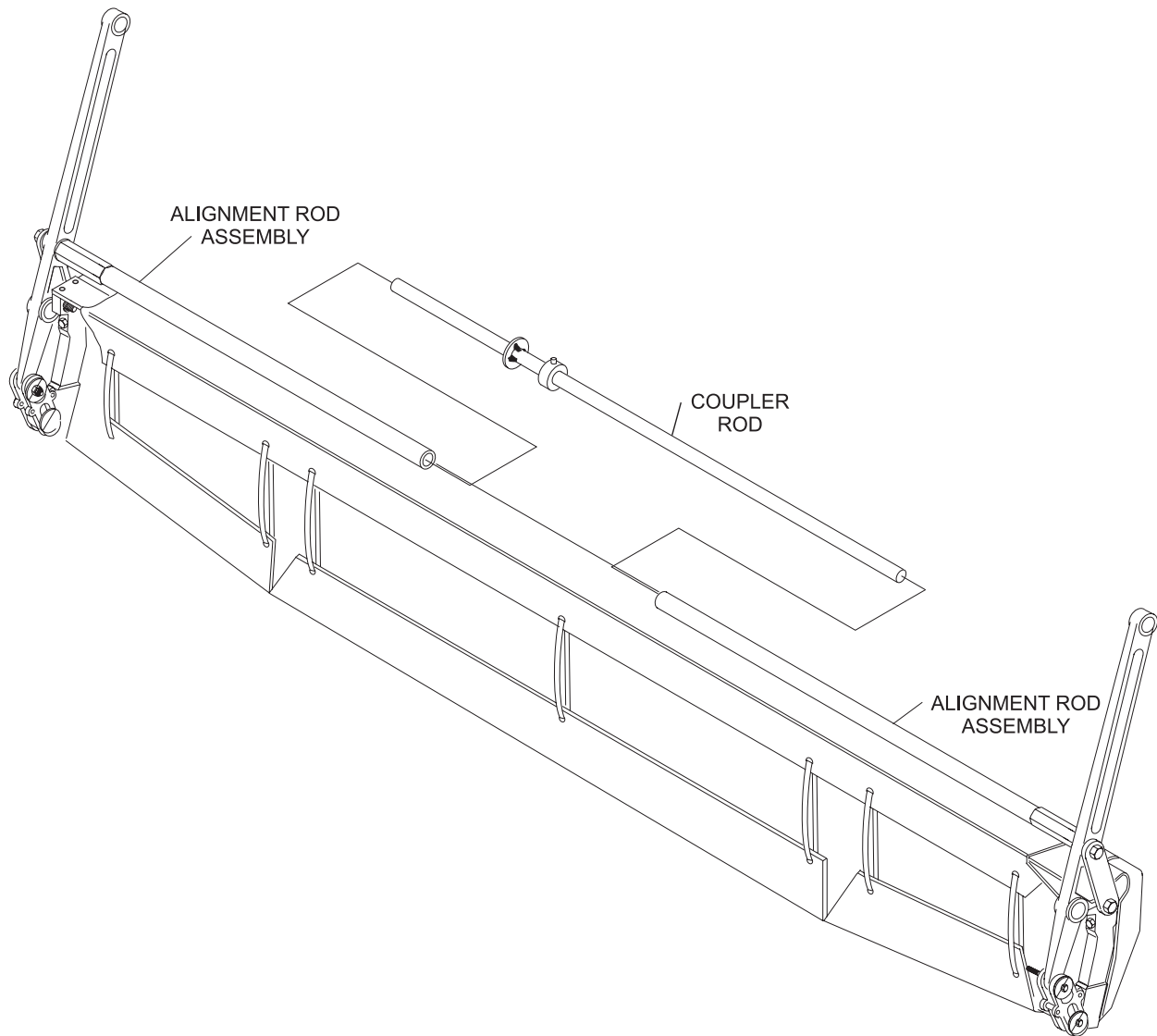


Figure 5

8. With one of the alignment rods against the non-welded side of the coupler rod, adjust the shaft collar so there is a gap of approximately 1/4" between it and the end of the alignment rod. Refer to *Figure 6*.

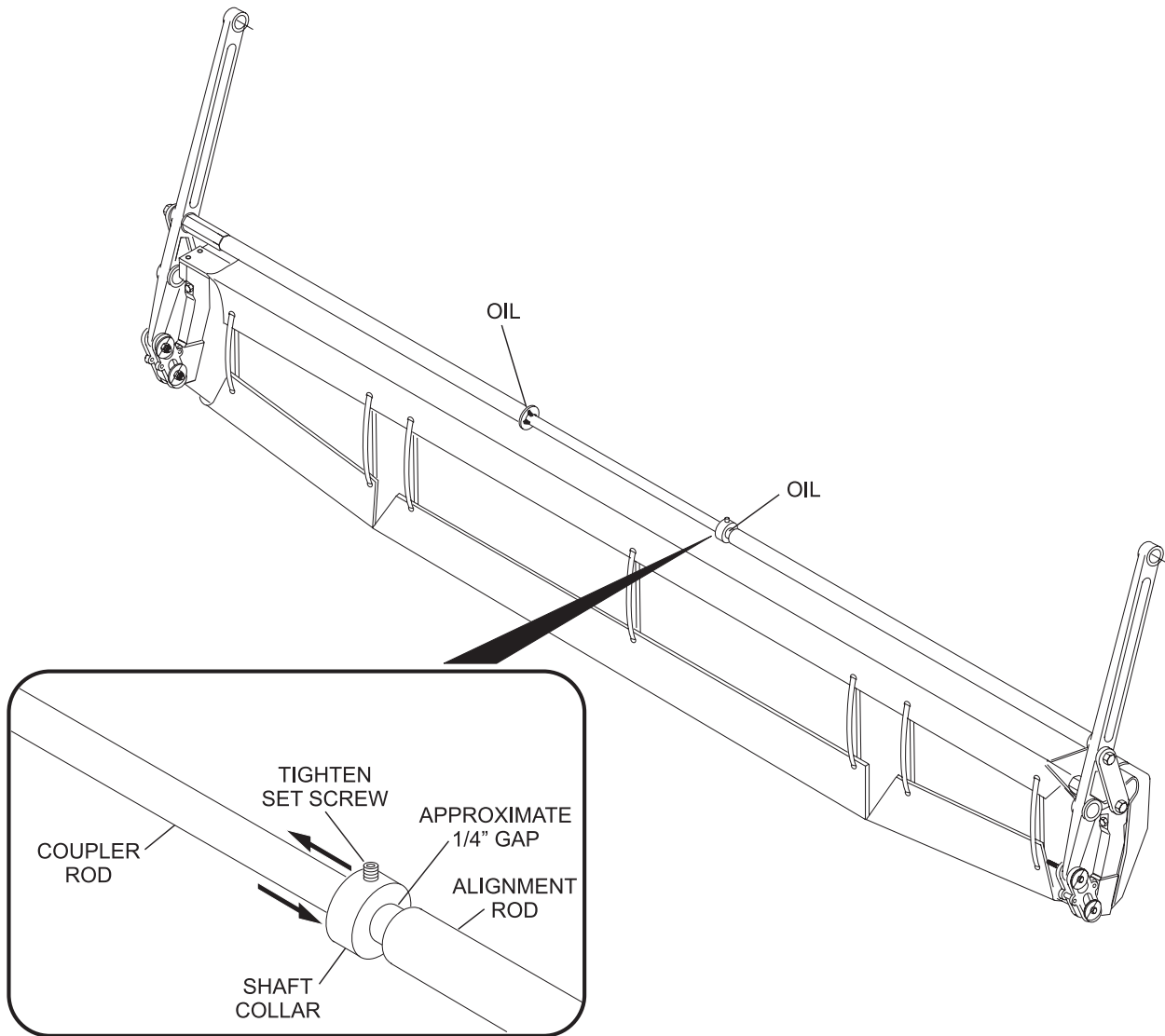


Figure 6

9. Firmly tighten the set screw on the shaft collar. Refer to *Figure 6*.
10. Place a couple of drops of oil on both sides of the coupler rod where they are inserted into the alignment rods. Refer to *Figure 6*.