

**Spinning Ball Eliminator II with Arm
12-862262-000**

The Brunswick Spinning Ball Eliminator II With Arm is a device that is a re-design of the original Spinning Ball Eliminator currently installed on most A/A2 Automatic Pinsetters. Its purpose is to guide a ball into the ball wheel and stop a ball from spinning as it attempts to enter the ball lift rod assembly in a more positive manor then the original Spinning Ball Eliminator. Unlike the rubber arm cover, the urethane wheels rotate as the ball enters onto the ball wheel reducing wear and the subsequent compensating height adjustments of the arm.

Installation



WARNING! Disconnect the input power connector to the electrical box.

1. Position the SBE II With Arm on the elevator frame at the rear of the pinsetter as dimensioned in *Figure 1*.

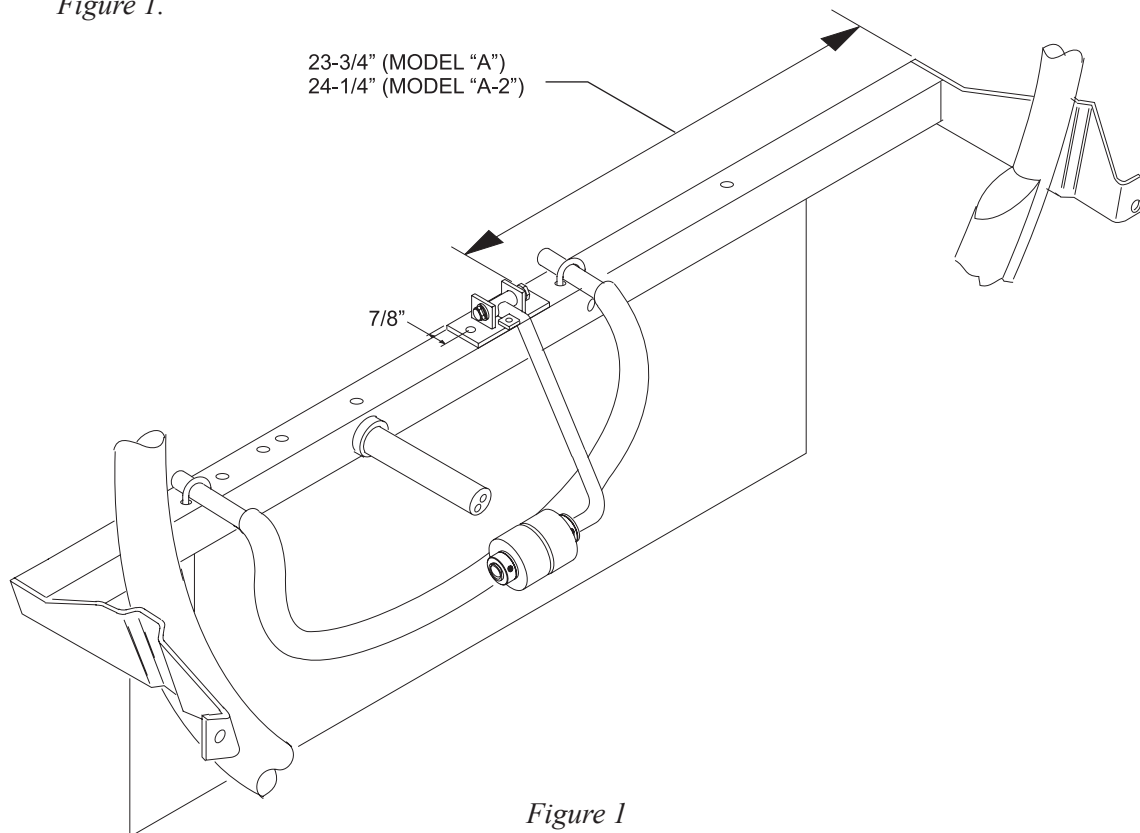


Figure 1

2. Using the SBE II mounting plate assembly as a template, mark and drill two 21/64” diameter holes through the elevator frame assembly for the 5/16” - 18 X 3” mounting bolts. A “C” clamp may be used to hold the mounting plate in position.

3. On some models of the Brunswick Pinsetter, there is a rear bracket assembly designed to hold the pin deflector (masonite board). This rear bracket must be notched to allow for unrestricted installation and function of the SBE II. Refer to *Figure 2*

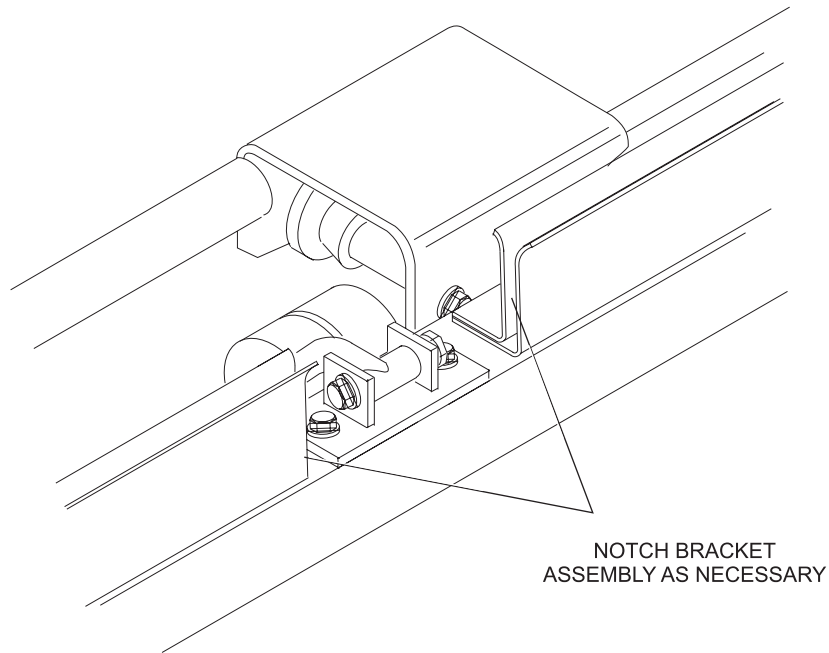


Figure 2

4. Mount the SBE II to the elevator frame using two 5/16" – 18 X 3" bolts, two 5/16" plain washers, two 5/16" lockwashers, and two 5/16" – 18 hex head nuts (provided).
5. Using a 5/32" Allen wrench, tighten the setscrew in the collar closest to the 90 degree bend. Loosen and adjust the outer collar leaving a slight gap between the 2 flanged bronze bushings, then retighten. This will allow the wheels to act independent of one another. Refer to *Figure 3*.

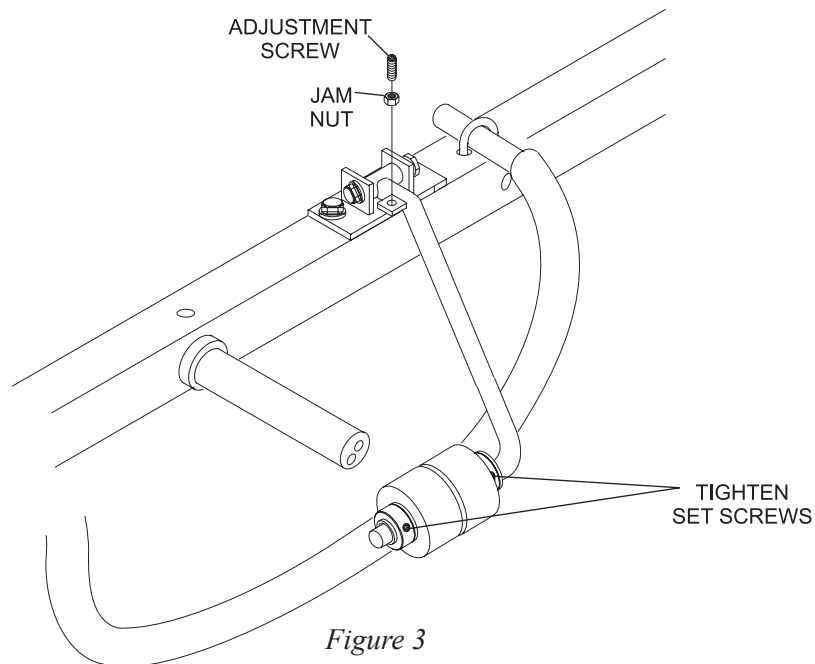


Figure 3

Adjustment

The SBE II should be adjusted so that the minimum contact necessary stops the spin of a ball entering the ball lift rod assembly. If the arm is adjusted too low, it will not function to its optimum capacity. When the arm is in the proper position to stop the spin of the ball, there will only be a slight movement of the arm (no excessive bouncing) when it contacts the spinning ball.

1. Place a standard size bowling ball in the approximate position that ball spinning occurs on your particular pinsetter.
2. On the arm assembly, loosen the jam nut on the 5/16"-18X1 1/2" adjustment screw. Adjust the arm up or down by turning the adjustment screw clockwise or counterclockwise until minimum contact occurs between the ball and the urethane rollers on the arm assembly.
3. Loosen the hardware mounting the Spinning Ball Eliminator to the elevator frame and position the assembly so the arm assembly and urethane rollers are parallel to the ball wheel.
4. Tighten the jam nut on the adjustment screw and secure the mounting hardware.



NOTE: Lubricate the flanged bronze bushing with a drop of oil annually or as required.