

Turret Reinforcement Kit 12-862009-000

Packaging

- 1 ea. 12-862009-000 Moving Turret Reinforcement Kit
- 2 ea. 11-002066-001 Hex Head Screw 5/16-18 x 1-1/2"
- 2 ea. 11-170009-001 Self Locking Nut 5/16-18
- 1 ea. 11-170010-001 Self Locking Nut 5/16-24
- 4 ea. 11-190012-001 Washer 5/16
- 1 ea. 12-150003-000 Turret Frame Support
- 1 ea. 12-150006-000 Carriage Bolt 3/8-16 x 4"
- 2 ea. 12-150014-000 Spacer .750 x .313 x .275
- 2 ea. 12-150015-000 Coupling Nut 3/8-16 x 1-1/8"
- 1 ea. 12-150016-000 Carriage Bolt 3/8-16 x 3-1/2"
- 1 ea. 12-900017-000 Instruction Sheet

Tools Required

- 5/8" wrench or socket
- 5/16" wrench
- Drill gun with 5/16" drill bit
- C-clamp
- 1/2" wrench
- 9/16" wrench
- 3/16" Allen wrench
- Bar clamp or large nylon tie

Installation Procedure

1. Remove power to pinsetter.



WARNING! Remove power to the pinsetter by turning off the circuit breaker and unplugging the main power cord to the electrical box.

2. With an empty turret, manually cycle the pinsetter to 280 degrees.
3. Using a 3/16" Allen wrench, remove the turret bottom protector (P/N 12-150187-000).

- Using a bar clamp or large nylon tie, clamp the turret frame to the main cross shaft. Refer to *Figure 1*.

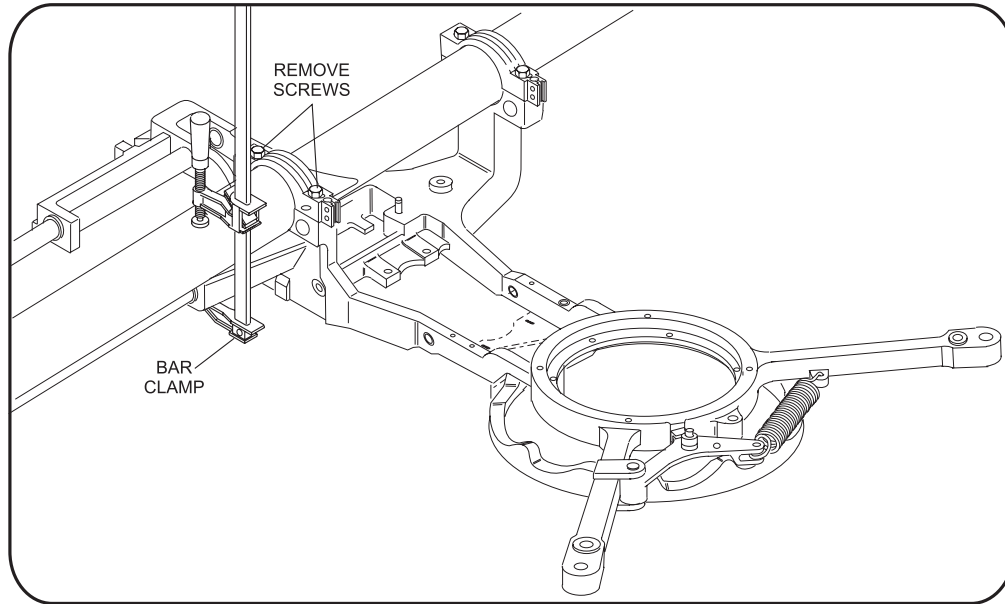


Figure 1

- For pinsetters series below #12844, remove internal wrenching nut (P/N 12-150191-000). Replace with provided 5/16-24 self locking nut (P/N 11-170010-001). Pinsetter series #12844 and above requires no change; 5/16-24 self locking nut should already be installed.
- Remove 3/8-16 x 4" hex head screw (P/N 11-005360-001) and 3/8-16 x 3" hex head screw (P/N 11-005356-001) that secure the turret frame and cap to the pinsetter frame.
- Install turret frame support plate (P/N 12-150003-000). Secure with provided 3/16-16 x 4" carriage bolt (P/N 12-150006-000), 3/16-16 x 3-1/2" carriage bolt (P/N 12-150016-000) and 3/8-16 x 1-1/8" coupling nuts (P/N 12-150015-000). The head of the bolts should be secured with flat edge against the support plate. Refer to *Figure 2*.

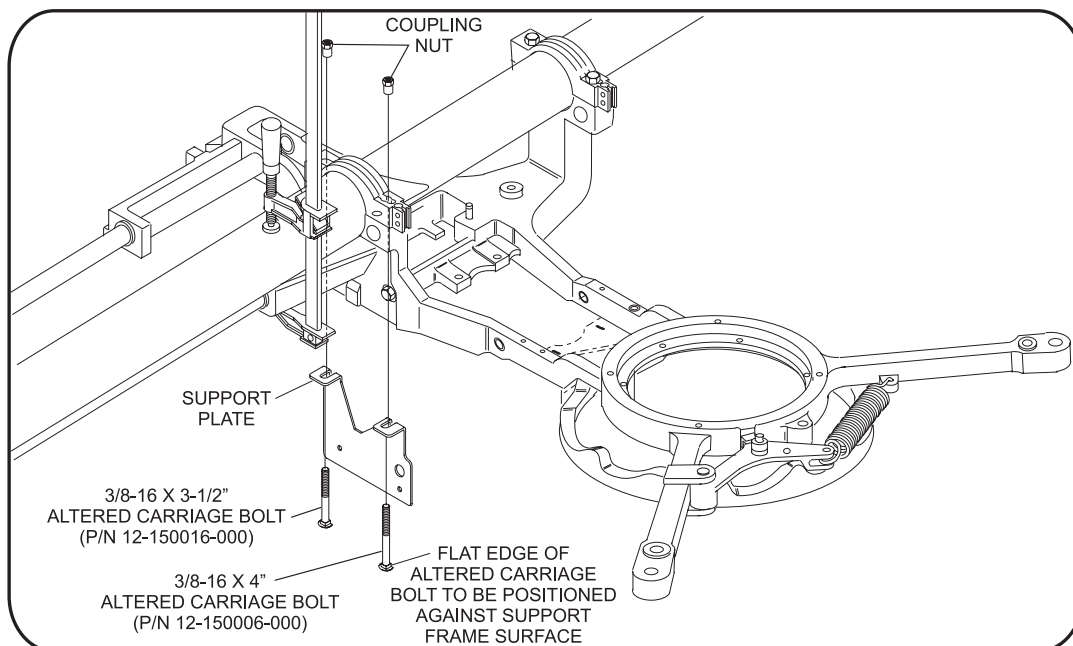


Figure 2

- Using c-clamp, secure the bottom of the support plate in position. Refer to *Figure 3*.

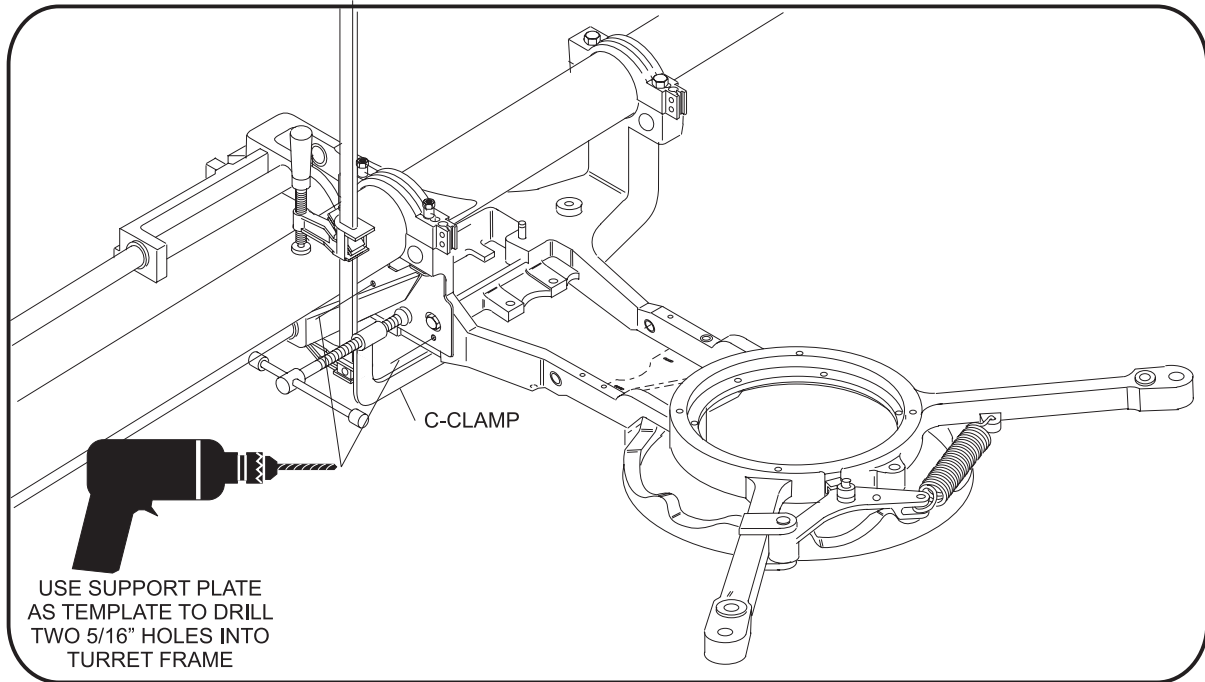


Figure 3

- Using the new support plate as a template, carefully drill two 5/16" holes into the turret frame. Be sure to keep the drill, level and straight. Refer to *Figure 3*.

i **NOTE:** Different turret frame castings may affect how the support plate fits. Secure the plate as tight as possible to the frame to guarantee a straight and level drill line.

10. Once holes are drilled, place an aluminum spacer (P/N 12-150014-000) between the turret frame and support plate. Thread the 5/16-18 hex head screw (P/N 11-002066-001) through the plate, spacer and washer. Secure the screw with another 5/16 washer and 5/16-18 self locking nut (P/N 11-170009-001). Refer to *Figure 4*.

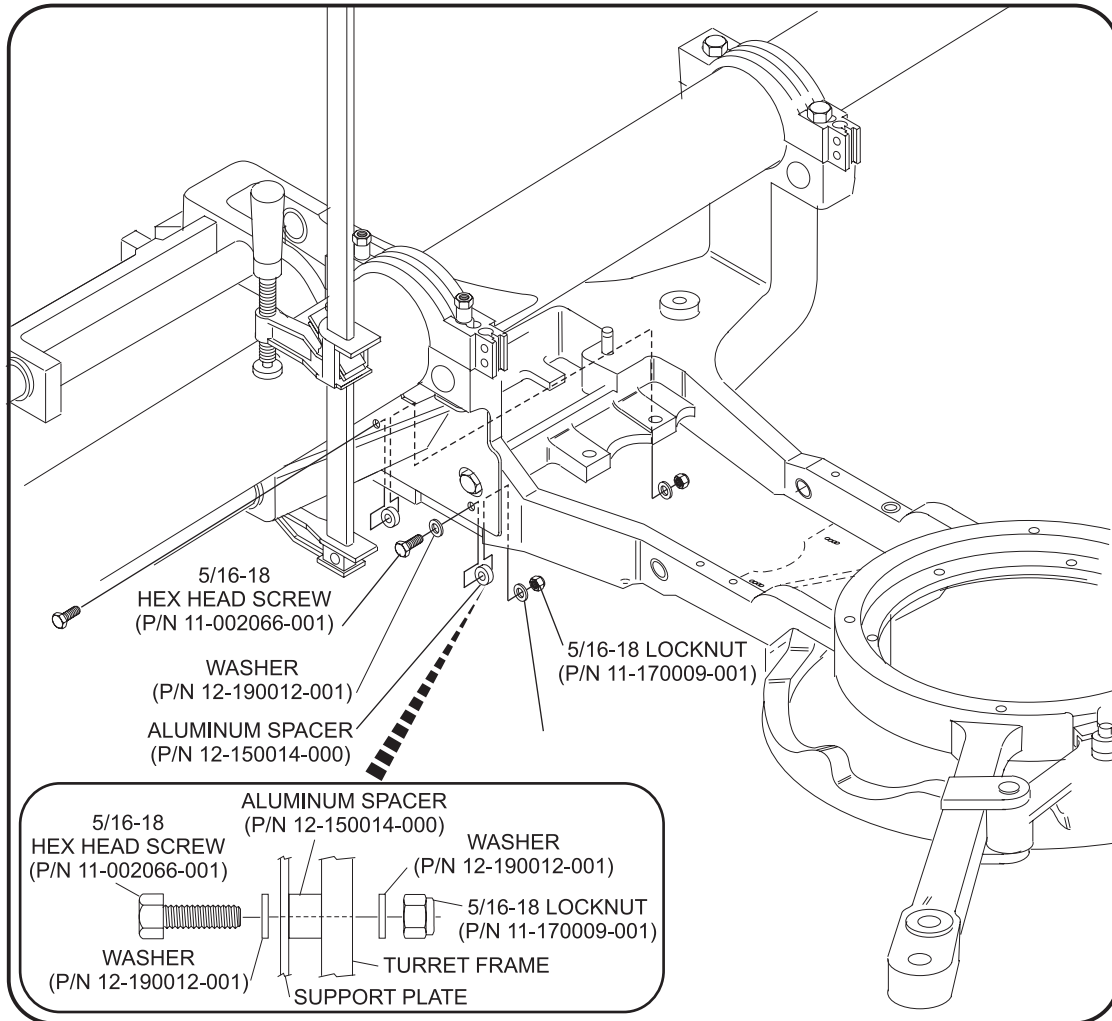


Figure 4

11. Verify all the hardware is secure, remove the all clamps and replace the turret bottom protector.
12. The Turret Reinforcement Kit is now installed. Restore power to the pinsetter.