

## **GS Pivoting Platform and Walkway**

**47-267124-000, 47-267125-000 and 47-267126-000**

### **Introduction**

The Brunswick GS Pivoting Platform and Walkway that can be lowered into place to provide the operator a platform for working at the front of the machine and a guard to prevent bowling balls from entering the pinsetter during pindeck/pit maintenance. When in the down position, the platform can pivot open to allow the mechanic safe access to the pindeck. Follow these instructions to install the GS Pivoting Platform and Walkway.

### **Packaging**

**1 ea. 47-267124-000 Package - Pivoting Platform Walkway Brackets and Hardware**

12 ea.	11-051015-001	Hex Head Cap Screw (M8 x 25 mm)
2 ea.	11-051081-001	Hex Head Cap Screw (M8 x 100 mm)
12 ea.	11-051704-001	Nut Hex (M8)
14 ea.	11-051744-001	Locknut (M8)
12 ea.	11-051770-001	Lockwasher (M8)
32 ea.	11-052006-001	Flat Washer (8.4 mm x 20 mm)
2 ea.	11-052016-001	Flat Washer (8.4 mm x 30 mm)
12 ea.	11-052619-001	Carriage Bolt (M8 x 55 mm)
3 ea.	11-081208-000	Robertson Drive, Flat Head Screw (#10 x 2")
2 ea.	47-086348-000	Strap - Lowered Platform
1 ea.	47-087105-000	Support - Left Hand Pivoting Platform
1 ea.	47-087107-000	Support - Right Hand Pivoting Platform
1 ea.	47-087112-000	Frame - Pivoting Platform
2 ea.	47-087117-000	Hinge - Pivoting Platform
1 ea.	47-087122-009	Lanyard - Pivoting Platform
1 ea.	47-087123-000	Handle - Pivoting Platform

**1 ea. 47-267125-000 Package - Pivoting Platform Walkway Boards**

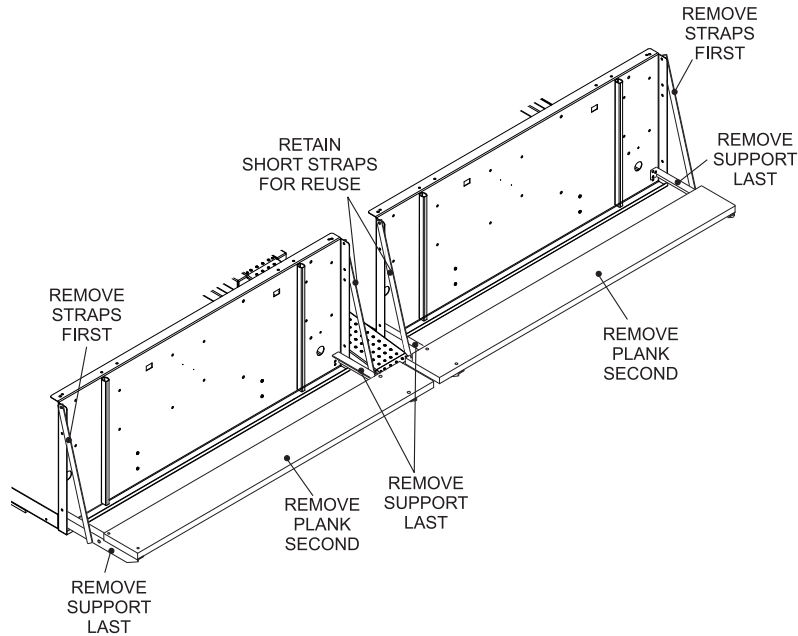
2 ea.	47-087111-000	Board - Pivoting Platform
1 ea.	47-087120-000	Board - Ball Stop

**1 ea. 47-267126-000 Pkg. - Ball Return, Pivoting Lowered Platform**

4 ea.	11-051035-001	Hex Head Cap Screw (M6 x 16 mm)
4 ea.	11-051743-001	Locknut (M6)
8 ea.	11-051704-001	Hex Nut (M8)
8 ea.	11-051770-001	Lockwasher (M8)
8 ea.	11-052006-001	Flat Washer (8.4 mm ID x 20 mm)
4 ea.	11-052028-001	Flat Washer (10.5 mm ID x 25 mm)
4 ea.	11-052037-001	Flat Washer (6.4 mm ID x 18 mm)
8 ea.	11-052619-001	Carriage Bolt (M8 x 55 mm)
4 ea.	11-053303-001	Lag Screw (M10 x 50 mm)
1 ea.	47-086384-000	Platform - Ball Return Kickback
2 ea.	47-086390-000	Bracket - Ball Return Kickback Platform
2 ea.	47-087110-000	Board - Lowered Ball Return Platform

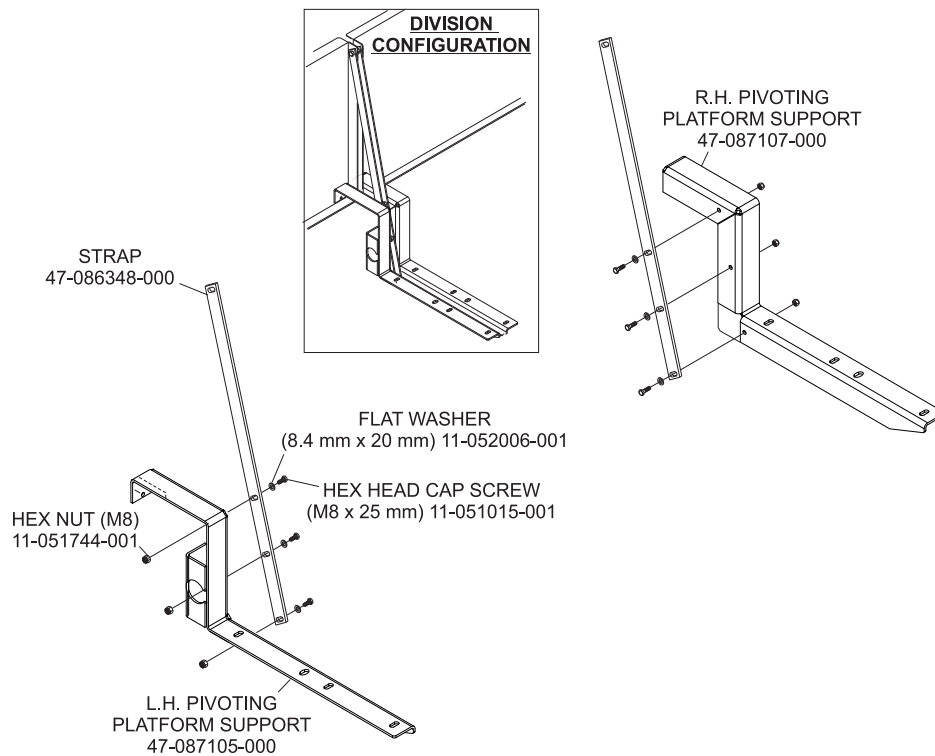
## Platform Installation

1. Remove the existing walkway and supports if previously installed on the GS pinsetter. The previously installed hardware, (ie. brackets, frame, and boards) will not be needed for the installation of the pivoting platform. Only the short support straps will be reused. Refer to *Figure 1*.



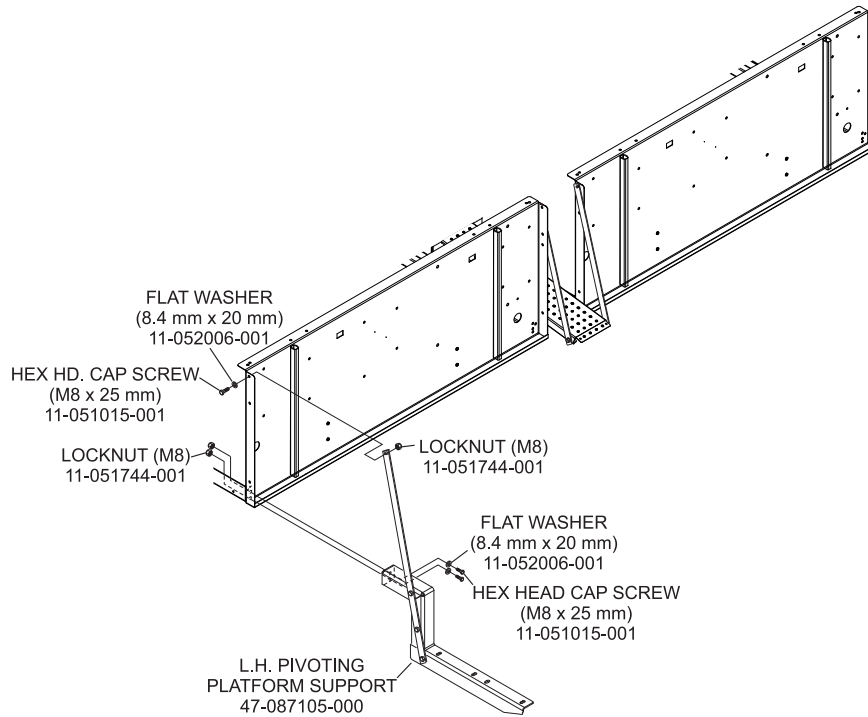
*Figure 1*

2. Secure the support straps, 47-086348-000, to the Pivoting Platform Supports. It is important to install the straps to the supports before mounting the platform supports to the pinsetter to allow for hardware access at the pinsetter division. Refer to *Figure 2*.



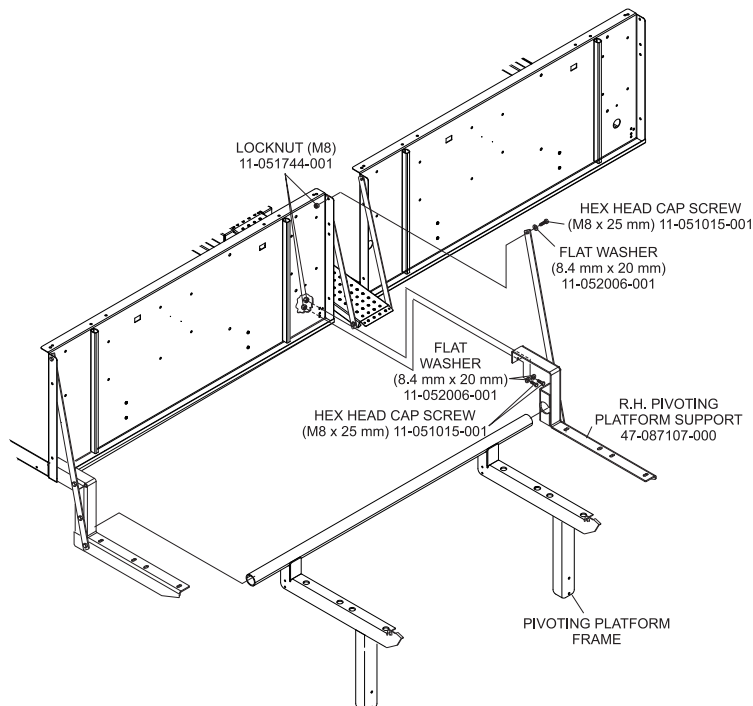
*Figure 2*

- Secure the L.H. Pivoting Platform Support, 47-087105-000, to the front of the GS pinsetter mainframe using two hex head caps screws (M8 x 25 mm), 11-051015-001, two flat washers (8.4 mm x 20 mm), 11-052006-001 and two (M8) hex nut, 11-051744-001. Refer to *Figure 3*.



*Figure 3*

- Insert the tube of the pivoting walkway frame into the hole in the installed L.H. Pivoting Platform Support bracket and place the hinge hole of the R.H. Pivoting Platform Support bracket, 47-087107-000, on the tube at the opposite side of the frame. Secure the R.H. pivoting platform support bracket to the front of the GS pinsetter mainframe. Refer to *Figure 4*.



*Figure 4*

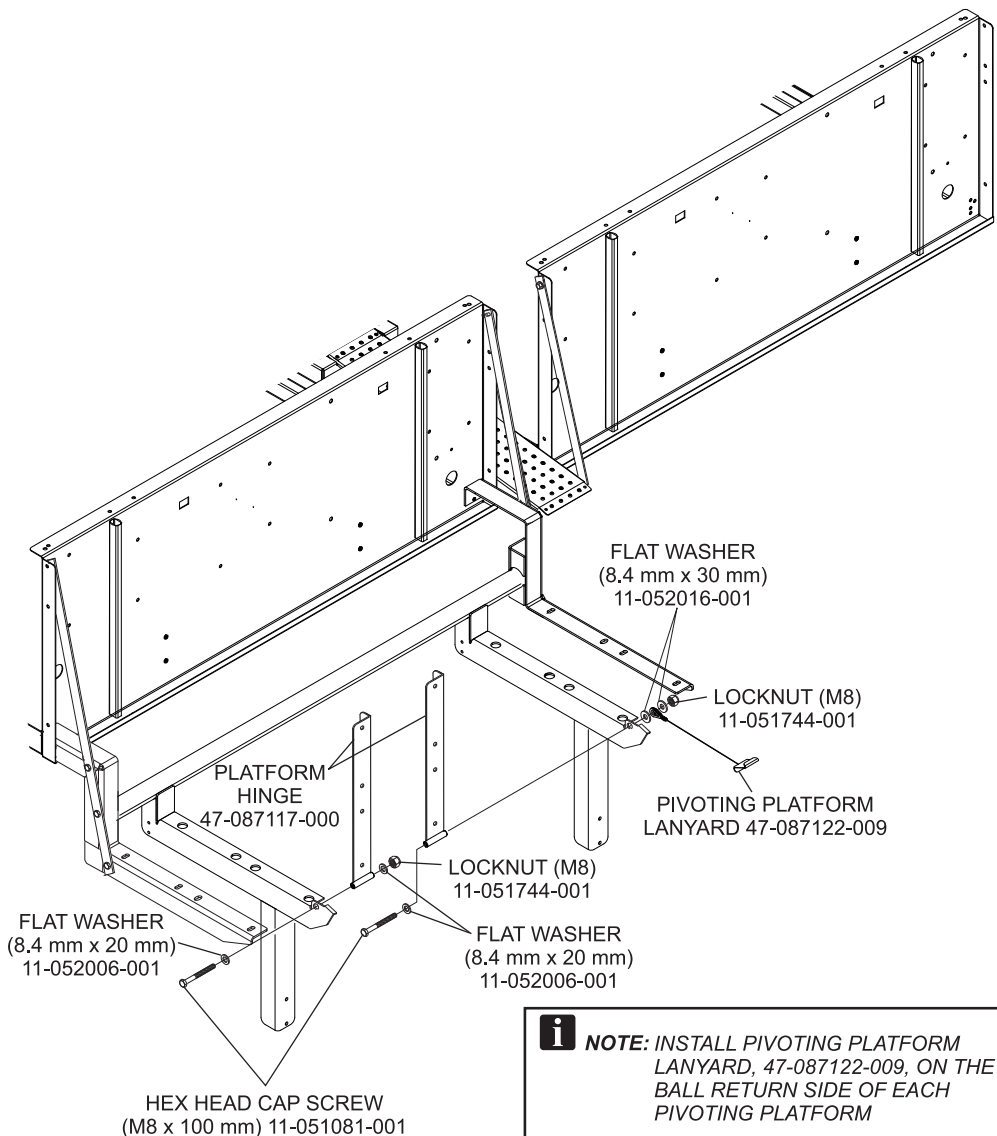
5. Mount the pivoting platform hinges to the pivoting walkway frame as follows:

*Division Side of Platform*

Attach a pivoting platform hinge, 47-087117-000, to the division side of the pivoting walkway frame using: one hex head cap screw (M8 x 100 mm), 11-051081-001, two flat washer (8.4 mm x 20 mm), 11-052006-001, and one locknut (M8), 11-051744-001. Refer to *Figure 5*.

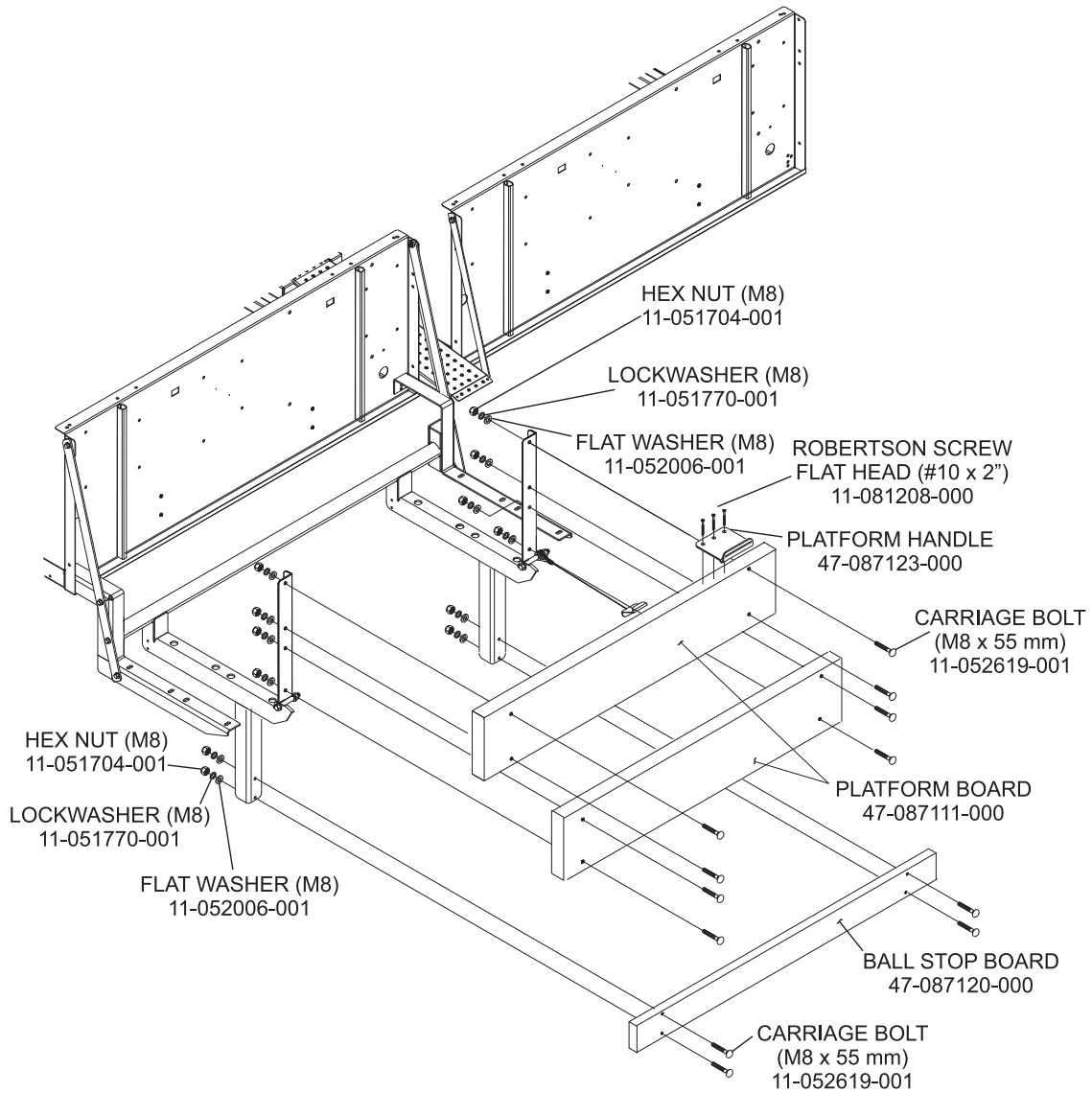
*Ball Return Side of Platform*

Attach a pivoting platform hinge, 47-087117-000, to the ball return side of the pivoting walkway frame using: one hex head cap screw (M8 x 100 mm), 11-051081-001, one flat washer (8.4 mm x 20 mm), 11-052006-001, two flat washers (8.4 mm x 30 mm), 11-052016-001, one lanyard and one locknut (M8), 11-051744-001. Refer to *Figure 5*.



*Figure 5*

- Mount the two pivoting platform boards, 47-087111-000, to the platform hinges using eight each of the following: carriage bolts (M8 x 55 mm) 11-052619-001, flat washers (M8) 11-052006-001, lockwasher (M8) 11-051770-001, and hex nuts (M8) 11-051704-001. Refer to *Figure 6*.

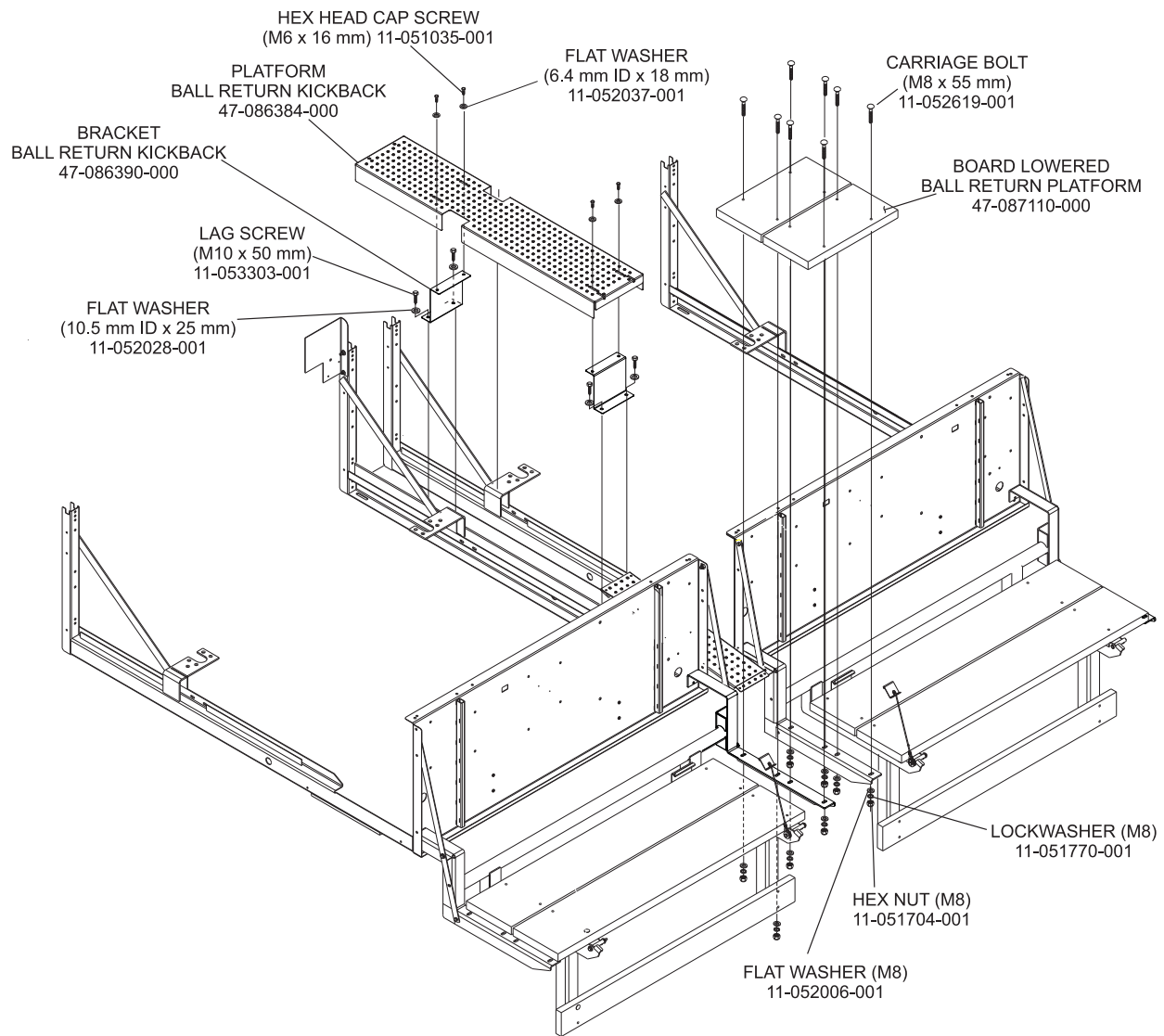


*Figure 6*

- Repeat steps 2 through 6 to install the pivoting platform on the other lane of the lane pair.

## Step Installation

1. Install the ball return step boards using four Carriage Bolt (M8 x 55 mm) 11-052619-001, flat washers (M8) 11-052006-001, lockwasher (M8) 11-051770-001, and hex nuts (M8) 11-051704-001. Refer to *Figure 7*.

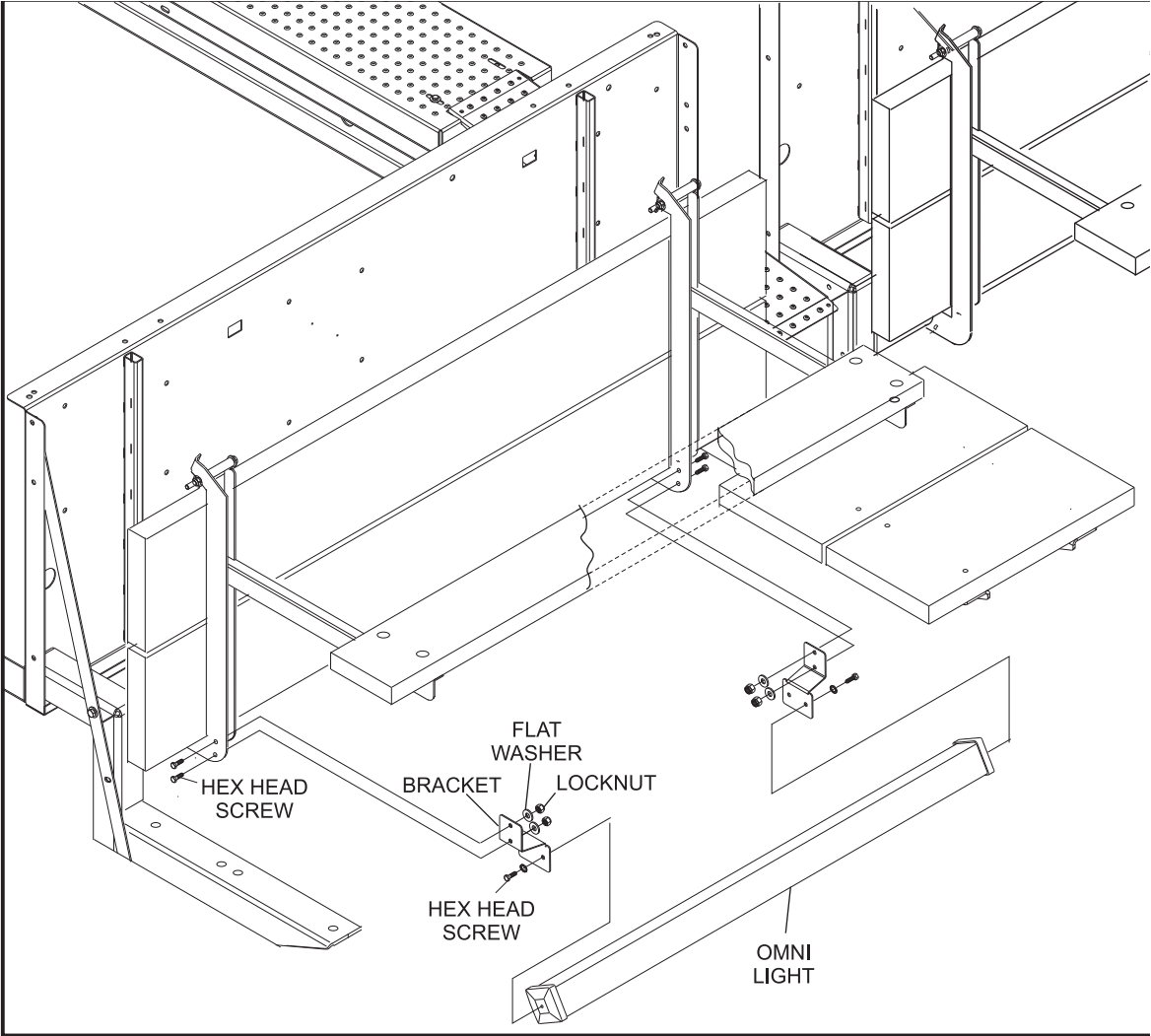


*Figure 7*

2. Mount the two ball return kickback brackets, 47-086390-000, to the ball return using four lag screws, (M10 x 50 mm) 11-053303-001. Refer to *Figure 7*.
3. Use the slots in the ball return kickback platform, 47-086384-000, to mount it to the the ball return kickback brackets using; four ea. Hex Head Cap Screw (M6 x 16 mm) 11-051035-001 and Flat Washers (6.4 mm ID x 18 mm) 11-052037-001. Refer to *Figure 7*.

# Optional Led Light Mounting

For centers with LED lighting in may be necessary to remount the light fixture. Refer to *Figure 8*.



*Figure 8*

## Pivoting Platform Parts Index

### Index

No.	Part Number	Description
1.	11-051015-001	Hex Head Cap Screw - M8 x 25 mm
2.	11-051081-001	Hex Head Cap Screw - M8 x 100 mm
3.	11-051704-001	Nut - M8 Hex
4.	11-051744-001	Locknut - M8
5.	11-051770-001	Lockwasher - M8
6.	11-052006-001	Flat Washer - 8.4 mm x 20 mm
7.	11-052016-001	Flat Washer - 8.4 mm x 30 mm
8.	11-052619-001	Carriage Bolt - M8 x 55 mm
9.	11-081208-000	Robertson Drive, Flat Head Screw - #10 x 2"
10.	47-086348-000	Strap - Lowered Platform
11.	47-087105-000	Support - Left Hand Pivoting Platform
12.	47-087107-000	Support - Right Hand Pivoting Platform
13.	47-087112-000	Frame - Pivoting Platform
14.	47-087117-000	Hinge - Pivoting Platform
15.	47-087122-009	Lanyard - Pivoting Platform
16.	47-087123-000	Handle - Pivoting Platform
17.	47-087111-000	Board - Pivoting Platform
18.	47-087120-000	Board - Ball Stop
19.	11-051035-001	Hex Head Cap Screw (M6 x 16 mm)
20.	11-051743-001	Locknut (M6)
21.	11-052028-001	Flat Washer (10.5 mm ID x 25 mm)
22.	11-052037-001	Flat Washer (6.4 mm ID x 18 mm)
23.	11-053303-001	Lag Screw (M10 x 50 mm)
24.	47-086384-000	Platform - Ball Return Kickback
25.	47-086390-000	Bracket - Ball Return Kickback Platform
26.	47-087110-000	Board - Lowered Ball Return Platform



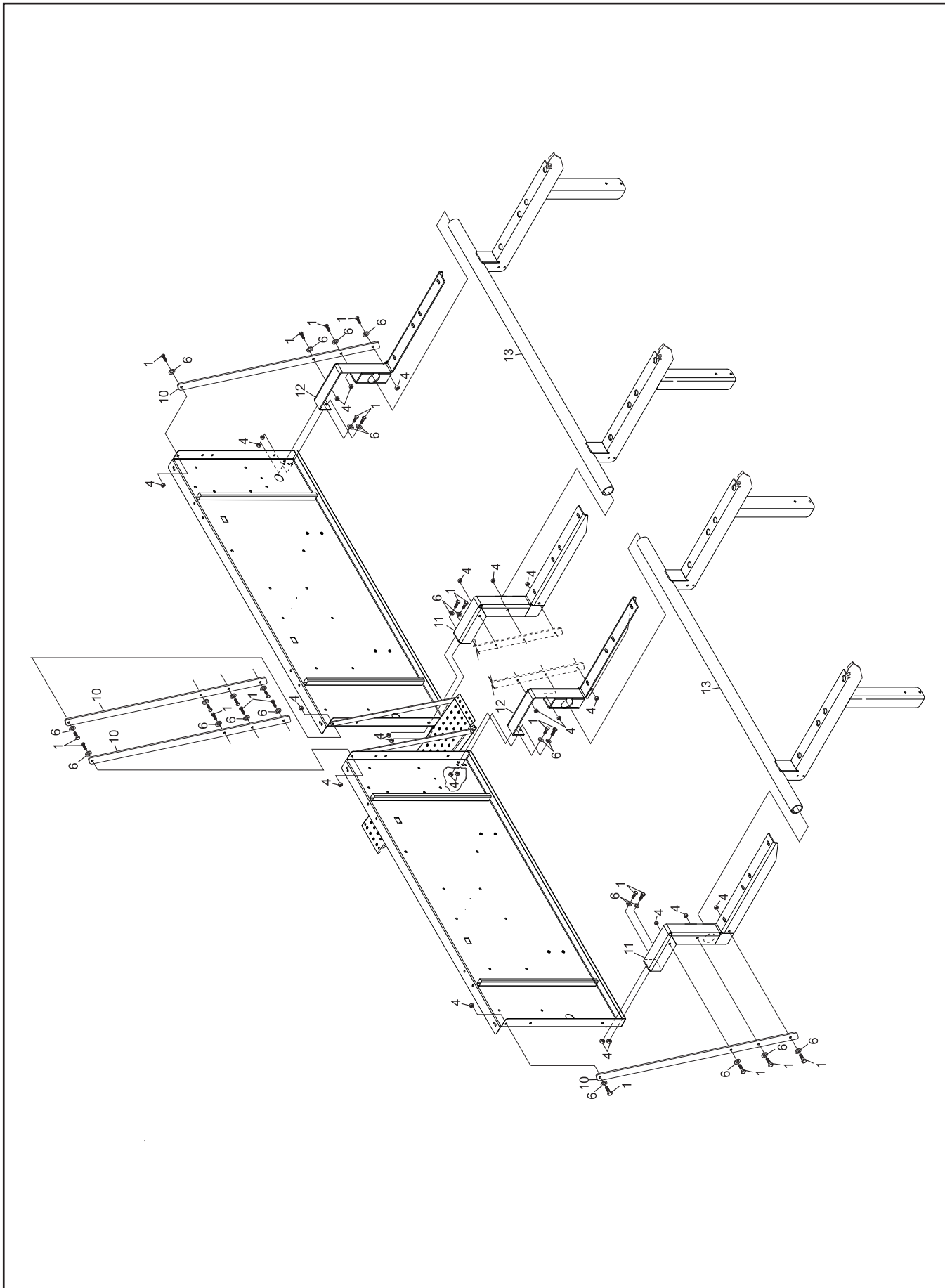


Figure 9

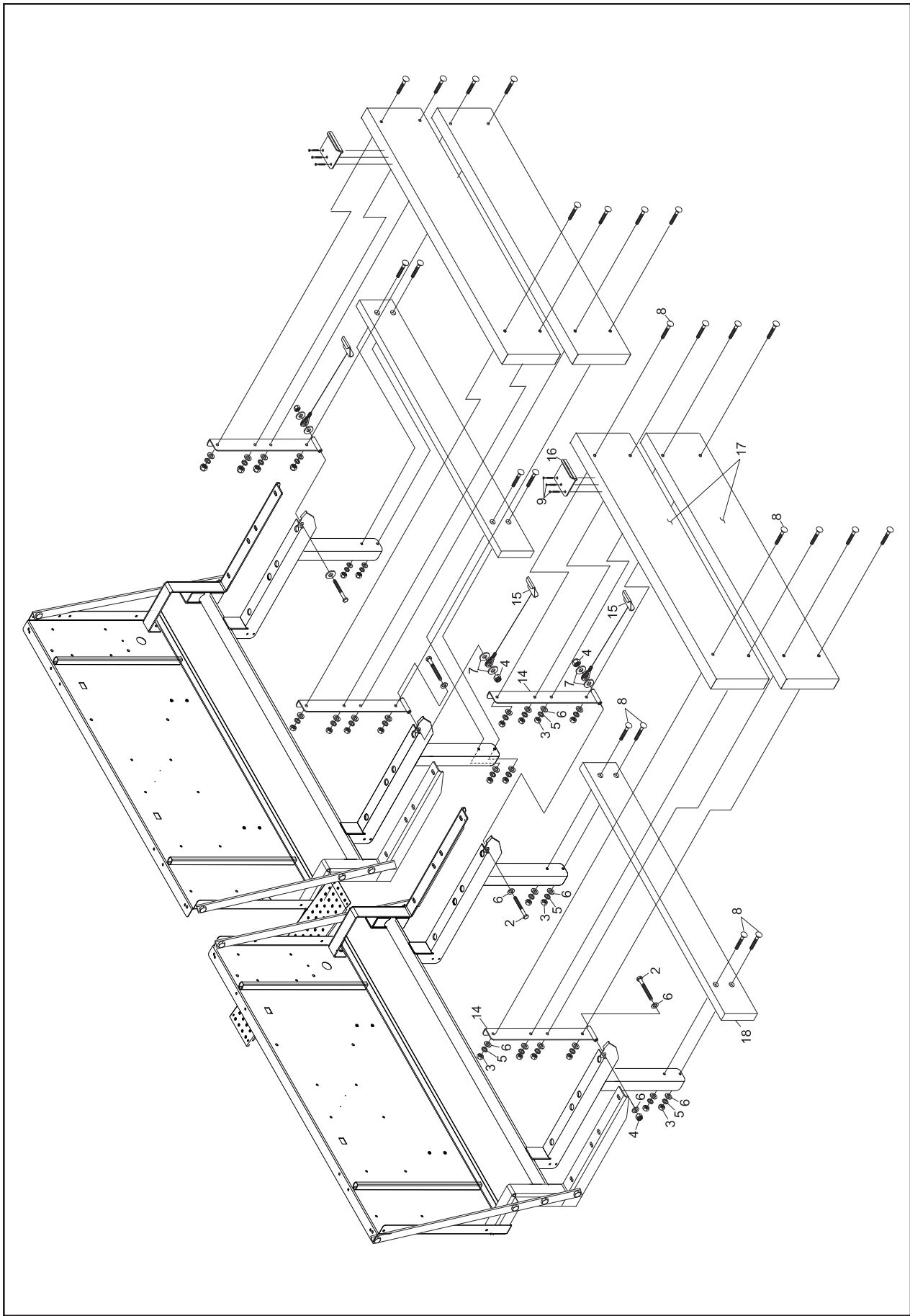


Figure 10

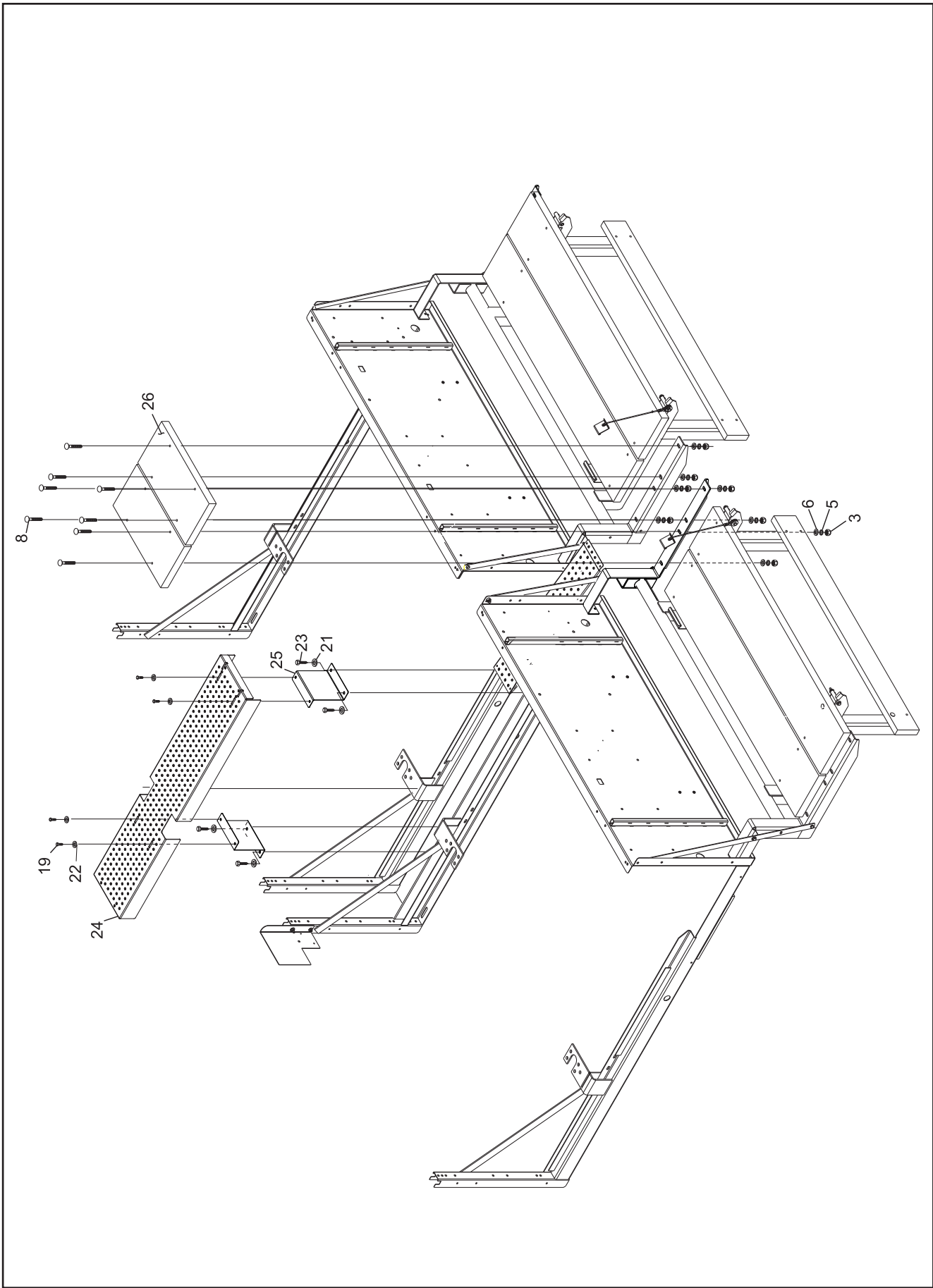


Figure 11