

# SERVICE BULLETIN

**Subject:** LCD Scorer Electrical Shock Sticker and  
Installation of the Second Lamp

**Date:** 3/10/06

**Distribution:** Vector Scoring LCD Scorer Customers

**Bulletin No.** SB06-1

It has come to our attention that the second lamp on the LCD scorer should be connected to reduce failure and increase the life of the product. An electrical shock hazard sticker, part number 11-681156-000, included with this Bulletin must be added to the Inverter PCB to indicate the risk of shock.

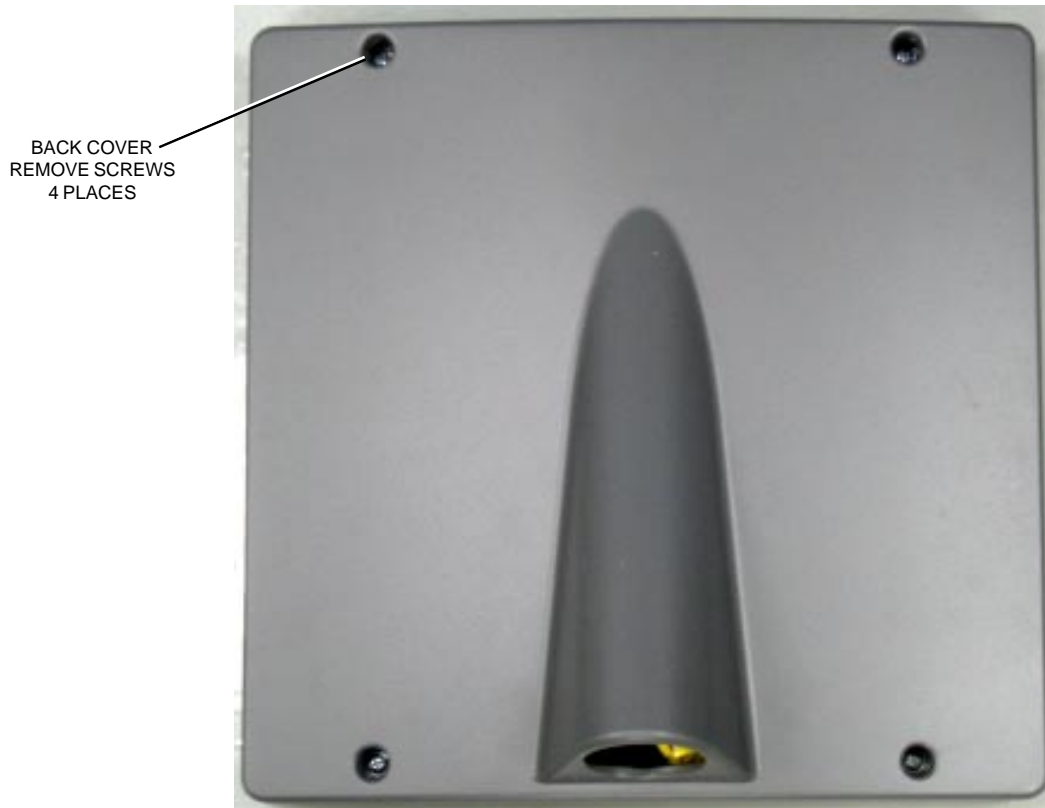
The current version LCD, part number 57-500413-401, has clear cellophane covering the inverter PCB. The clear cellophane material is not thick enough to prevent a sharp solder point from puncturing the surface. If a solder point punctures the surface of the cellophane an electrical shock could occur. Refer to *Figure 1*.



*Figure 1*

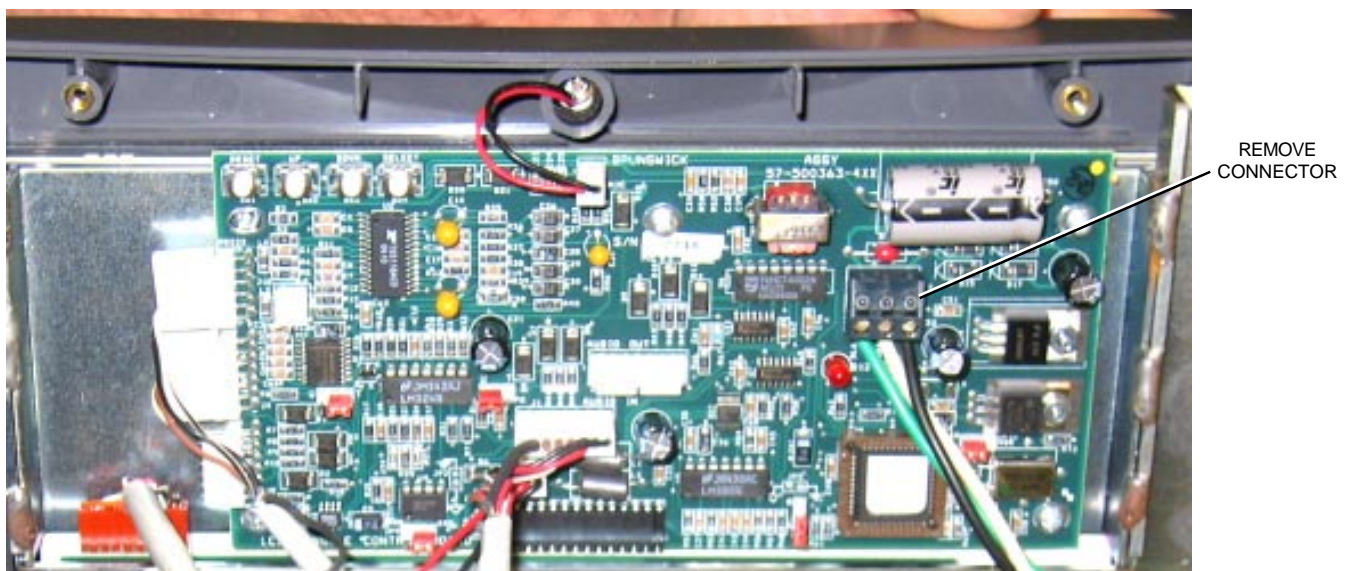
The connection of the second lamp and installation of the electrical shock hazard sticker can be completed at the bowling center. To accomplish this, use the following instructions.

1. Remove the four screws which secure the back cover and remove the cover to gain access to the second lamp plug. Refer to *Figure 2*.



*Figure 2*

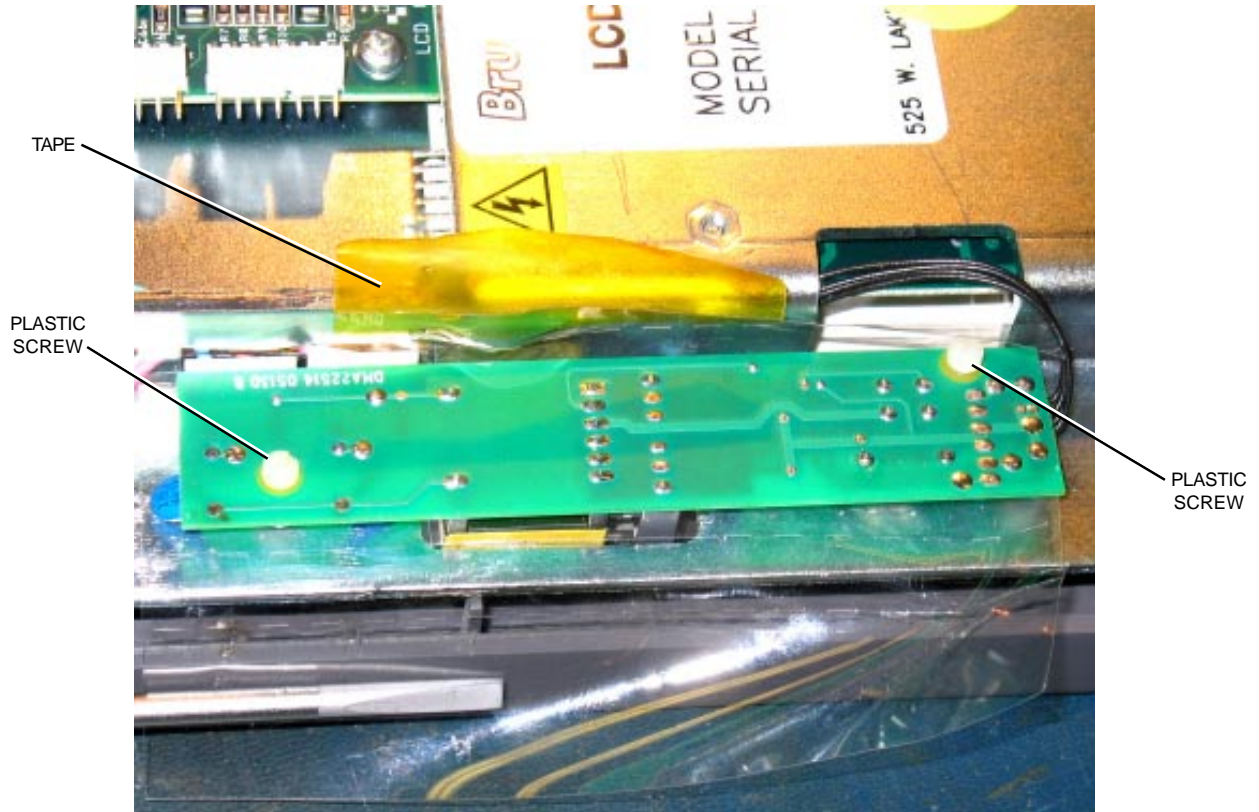
2. Remove the power from the LCD scorer by removing the black connector with three wires, (black, green, and white), from the PCB board. Refer to *Figure 3*.



*Figure 3*

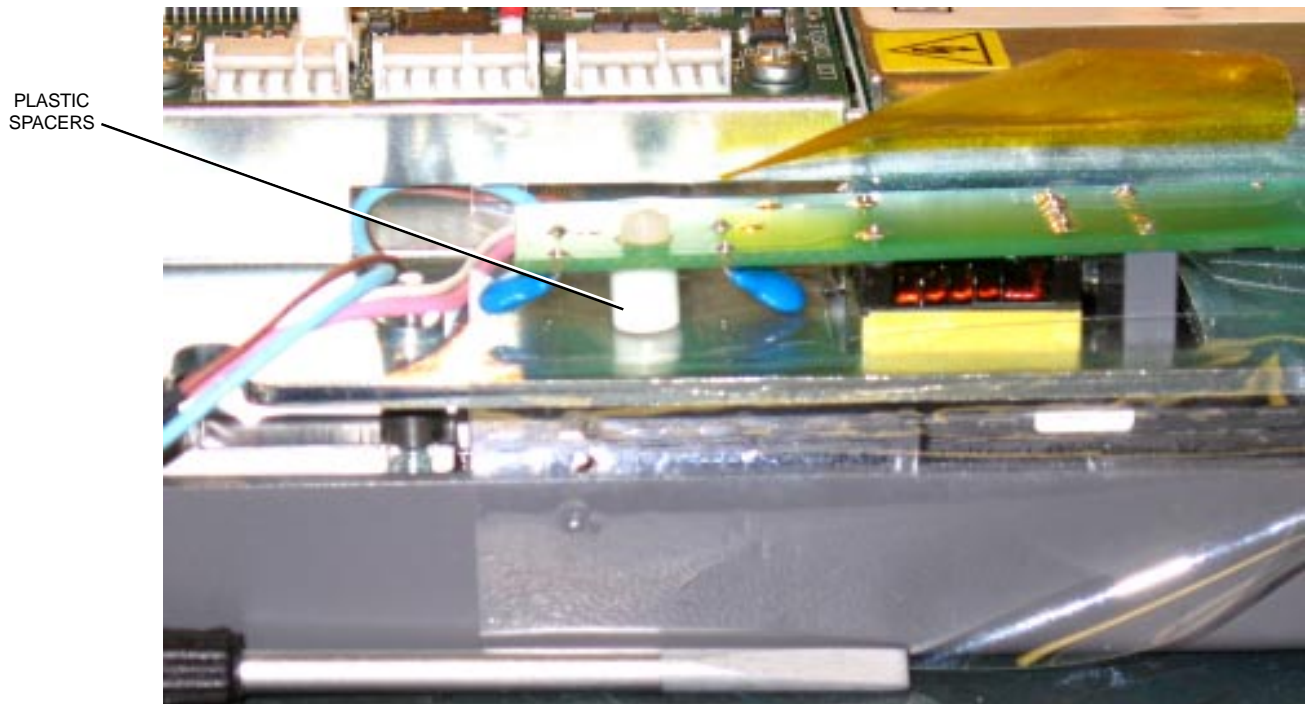


3. Remove the tape from the clear plastic cellophane and retain for reassembly. Refer to *Figure 4*.
4. Remove the two plastic screws and retain them for reassembly. Refer to *Figure 4*.



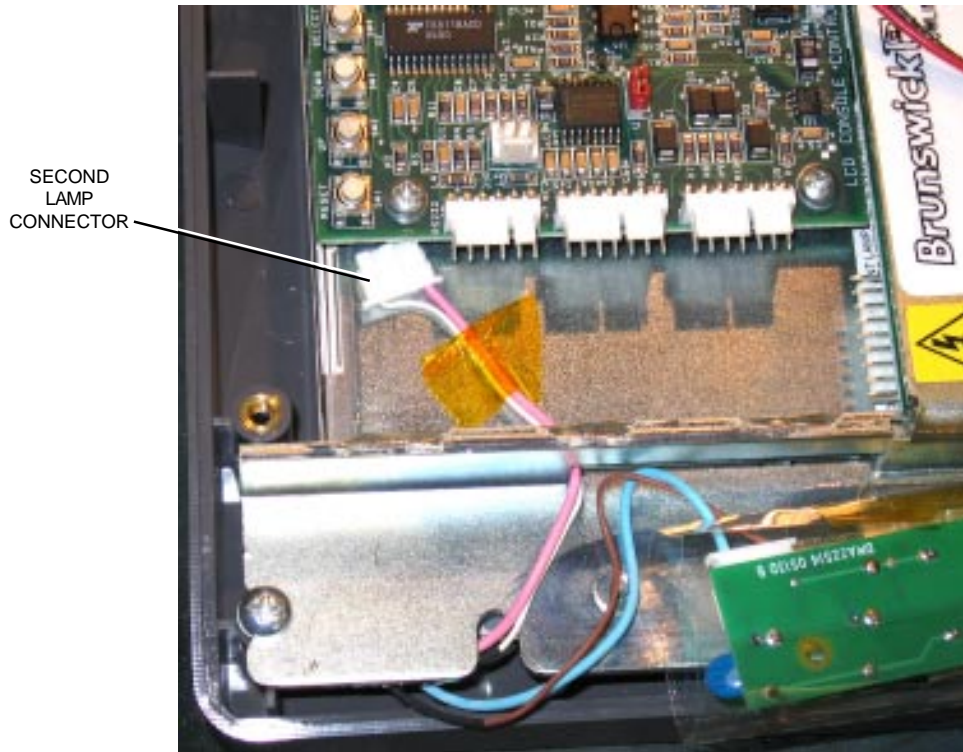
*Figure 4*

**i** *NOTE: Do not lose the plastic spacers under each screw. Refer to Figure 5.*



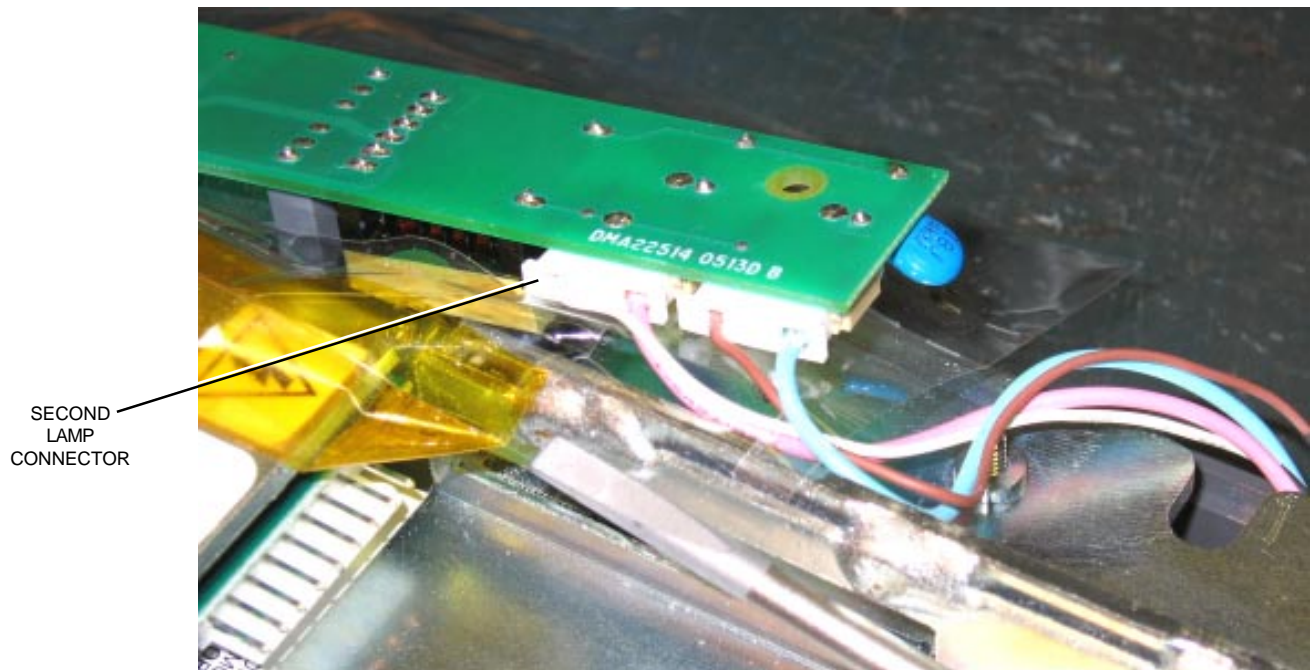
*Figure 5*

5. Identify the previously unused second lamp connector, the white plastic connector with a white and pink wires attached. Refer to *Figure 6*.



*Figure 6*

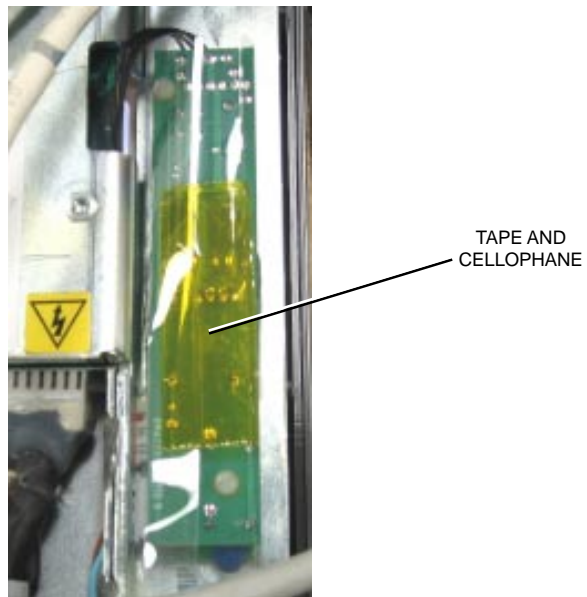
6. Connect the second lamp connector to the Inverter PCB. The lamp connector must go through the metal slot and plug into the inverter PCB. Refer to *Figure 7*.



*Figure 7*



7. Reinstall the Inverter PCB, reusing the two plastic screws and spacers. Refer to *Figure 4*.
8. Reapply the cellophane with tape retained in step 3. Refer to *Figure 8*.

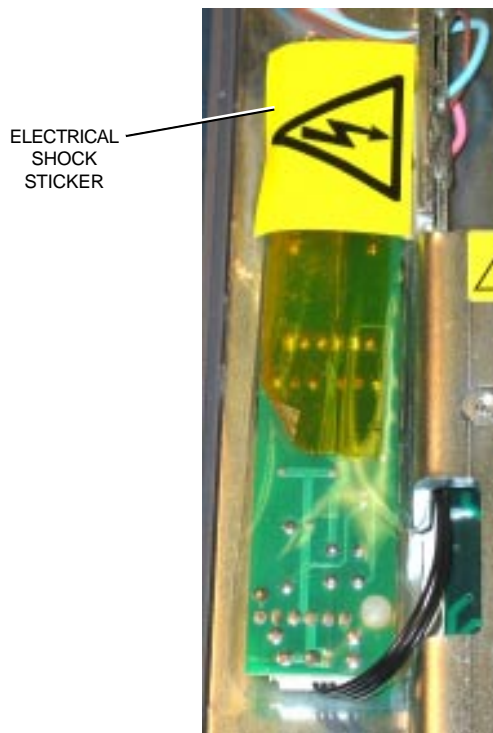


*Figure 8*

9. To prevent and indicate an electrical shock hazard, the electrical shock hazard sticker, part number 11-681156-000, included with this Bulletin, must be placed on the cellophane in the appropriate area as shown in *Figures 9 and 10*.



*Figure 9*



*Figure 10*

If you have questions regarding this or any other Service Bulletin, please contact the Brunswick Customer Response Center at 1-800-937-2695 or 231-725-4966, FAX 231-725-4667, or E-mail [http://www.brunswickbowling.com/contact\\_us](http://www.brunswickbowling.com/contact_us)

*Kord L. Daniels*

Kord L. Daniels  
Service Product Engineer

*David E. Rice*

David E. Rice  
Director of Worldwide Service