

Subject: Bankshot/Pinball Wizard

Date: 2/16/01

Distribution: Bankshot & Pinball Wizard Customers

Letter No. CEB01-1

Bankshot and Pinball Wizard Vertical Support Replacement

The Bankshot and Pinball Wizard Vertical Support has been redesigned. The new Vertical Support is available as a replacement service part. Details for ordering are listed below. As part of the new design the Vertical Support Arms are now available as a left-hand (7-pin side) and a right-hand (10 pin side). We have also replaced the original clip with a more robust style for use on the original pins. Additional Pins and Clips are available for order as well.

Experience has indicated that most broken supports occur in the first three positions nearest the foul line. With that in mind, we are offering replacement Vertical Support Arms at no charge as a preventive maintenance measure. To more than ensure you are taken care of, we will send you five left and five right handed Vertical Support Arms for each lane of Bankshot or Pinball Wizard you own. We will also include at no charge, 10 replacement pins for these uprights, enough of the new clips to replace all the old clips on your lanes, as well as a tool to replace them with. Use these new Vertical Support Arms to replace the existing Vertical Support Arms you have in the first five hole positions on each side from the foul line. The Vertical Support Arms that are removed can then be retained and used as spares in hole positions down the lane.

To receive your replacement parts please fill out the form on page 2 and mail or fax it to our warranty department at the address listed below. Attached to this Service Letter are Service parts pages for Pinball Wizard for your reference **This offer ends May 31, 2001.**

Ordering information:

For additional spares of the items above, you may order them using the following information.

84-200454-002 Vertical Support left-hand (7-pin side)

84-200454-001 Vertical Support right-hand (10-pin side)

84-200458-001 Upper pin

11-537050-000 Upper Clip

84-200472-000 Clip Installation tool

Mail or fax information to:

Brunswick Warranty

525 West Laketon Ave

Muskegon, MI 49443

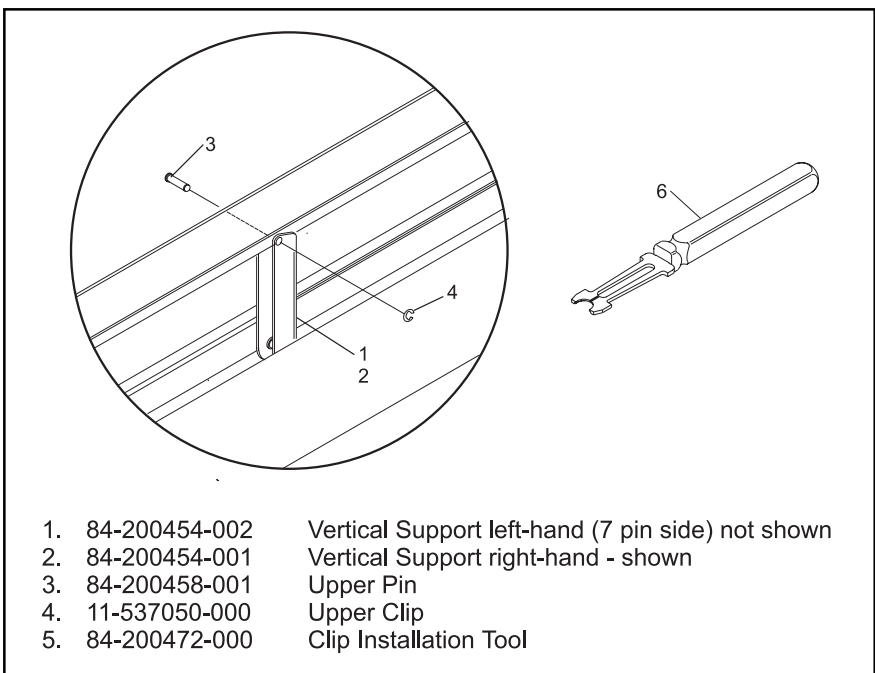
Fax 231-725-4966

Phone 800-323-8141



Mark Yoder

Customer Service Manager



*Bankshot/Pinball Wizard Replacement Form**

Center Name: _____ Customer Number: _____

Contact Person: _____ Phone Number: _____

Street Address: _____

City: _____ State: _____ Zip Code: _____

Total Lanes of Bankshot: _____

Total Lanes of Pinball Wizard: _____

Center Fax Number (optional): _____

*** Order request must be received prior to May 31, 2001**

MUSKEGON USE ONLY

_____ Lanes x 5ea LH Supports = _____ Total LH Supports (84-200454-002)

_____ Lanes x 5ea RH Supports = _____ Total RH Supports (84-200454-001)

_____ Lanes x 10ea Pins = _____ Total Pins (84-200458-001)

_____ Lanes x 62 Clips = _____ Total Clips (11-537050-000)

1 each Clip Installation Tool per 16 Lanes = _____ Tool(s) (84-200472-000)

NOTES

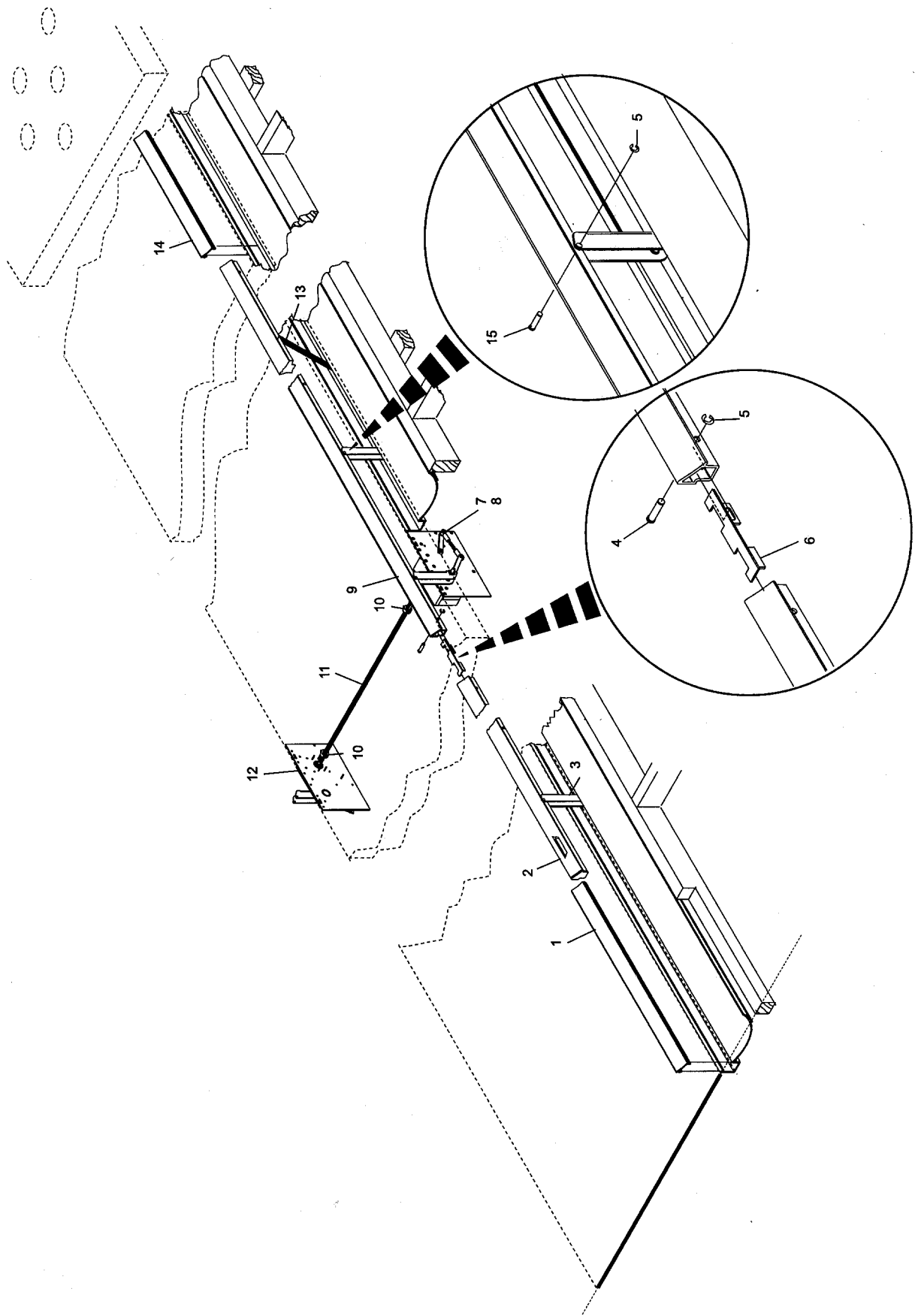
Approved: _____ **Date:** _____ **Order #:** _____

**Attachment
Service Parts Pages**

Index No.	Part No.	Description
1.	*84-200466-xxx	Cosmetic Cover - Foul Line End
2.	*84-200470-xxx	Rail Section - Foul Line with Notch (left-hand)
	*84-200471-xxx	Rail Section - Foul Line with Notch (right-hand)
3.	84-200454-001	Vertical Support - right-hand (10 pin side) - shown
	84-200454-001	Vertical Support - left-hand (7 pin side) - not shown
4.	84-200458-003	Rail Coupler Pin
5.	11-537050-000	E-Clip
6.	84-200457-000	Rail Coupler
7.	84-860644-115	Drive Pivot Assembly with Motor - 115VAC (left-hand)
	84-860643-115	Drive Pivot Assembly with Motor - 115VAC (right-hand)
8.	84-860644-230	Drive Pivot Assembly with Motor - 230VAC (left-hand)
	84-860643-230	Drive Pivot Assembly with Motor - 230VAC (right-hand)
9.	*84-200468-xxx	Rail Section - Common (left-hand)
	*84-200469-xxx	Rail Section - Common (right-hand)
10.	84-200542-000	Shaft Collar
11.	84-200515-000	Cross Lane Link
12.	84-860645-001	Driven Pivot Assembly without Motor (left-hand)
	84-860645-002	Driven Pivot Assembly without Motor (right-hand)
13.	84-200455-000	Rail Spring
14.	*84-200465-xxx	Cosmetic Cover - 31-1/8" (pit end)
	*84-860622-xxx	Cosmetic Cover - 118" Stand Alone
15.	84-200458-001	Upper Rail Arm Pin
16.	84-200458-002	Lower Rail Arm Pin - not shown

* Last three numbers (-xxx) designate color as listed in chart below.

Part No.	Gutter Color
-000	BLACK
-100	GREY
-101	BROWN
-102	BLUE

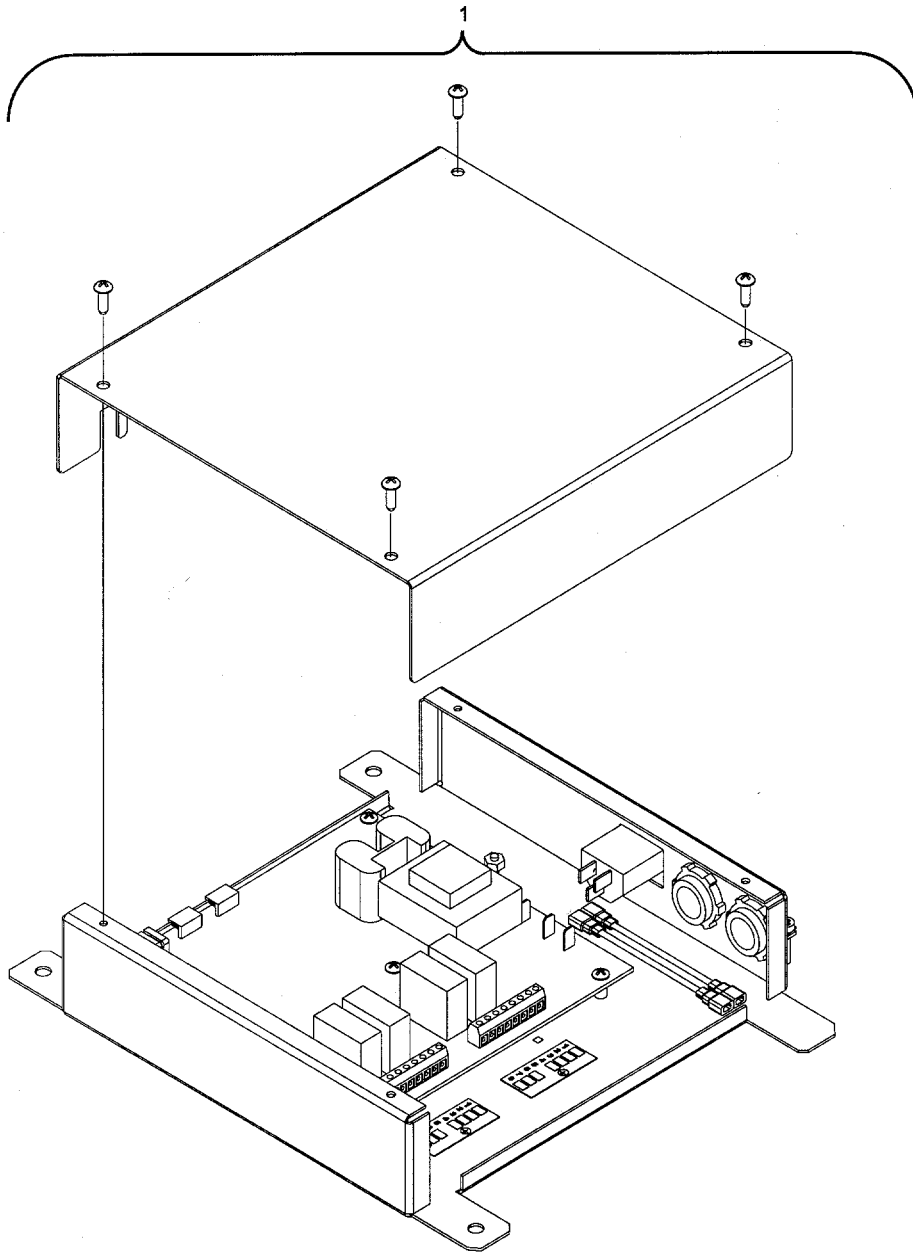


**Pinball Wizard Gutters -
Automated Bumpers System**

Index

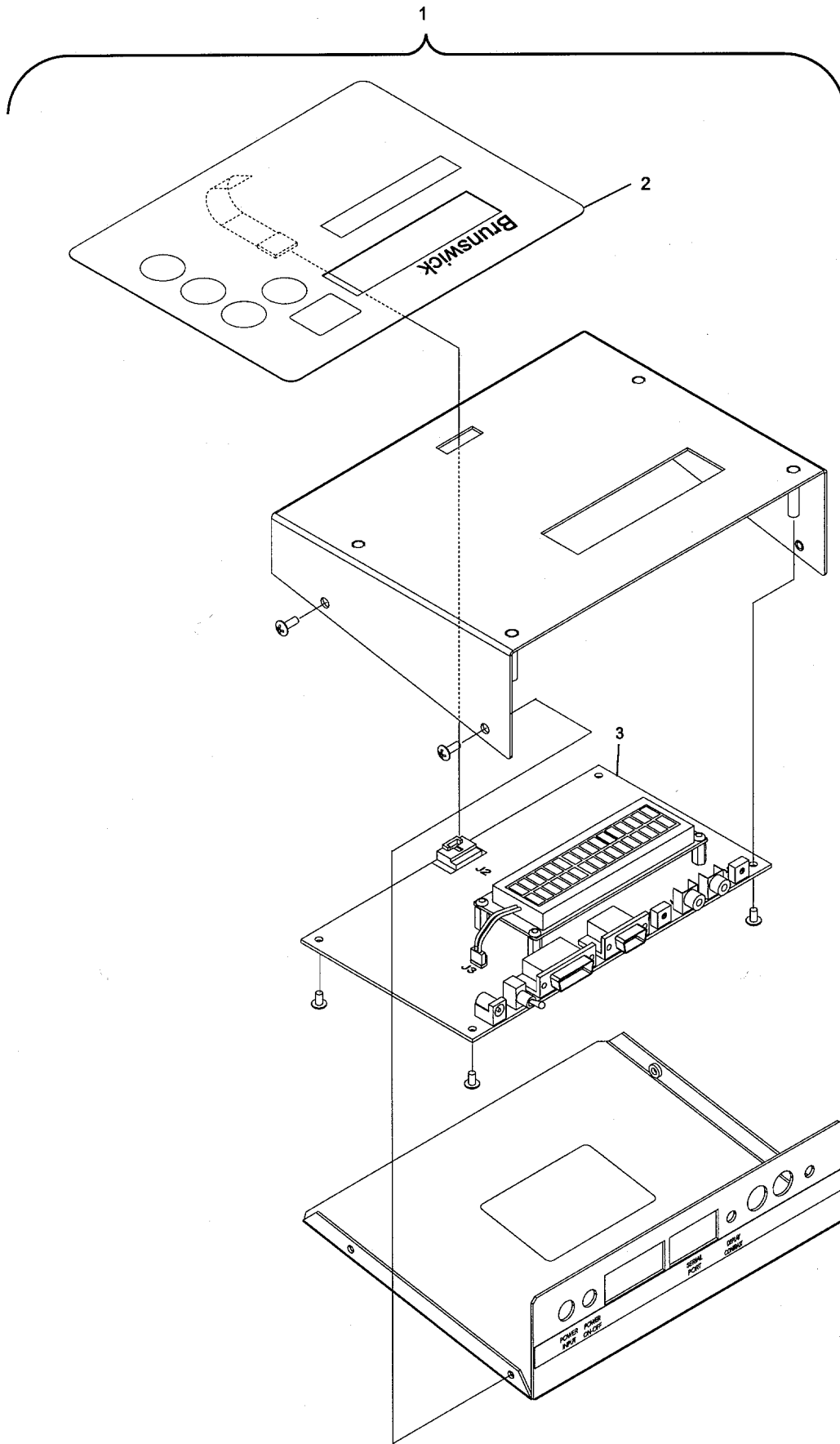
No.	Part No.	Description
1.	17-860783-000	Automated Bumper Controller
2.	*57-861638-000	Fuses - 1.6 Amp, 250V SLow Blow - Package of 4 - (115VAC only)
	*57-861619-000	Fuses - .8 Amp, 250V Slow Blow Package of 4 - (230VAC only)

* Not Illustrated



**Automated Bumper Controller PCB
(BallWall/Pinball Wizard)**

Index No.	Part No.	Description
1.	17-860794-000	Front Desk Controller Assembly
2.	17-300238-000	Keypad Only
3.	84-200346-4xx	Front Desk Controller PCB

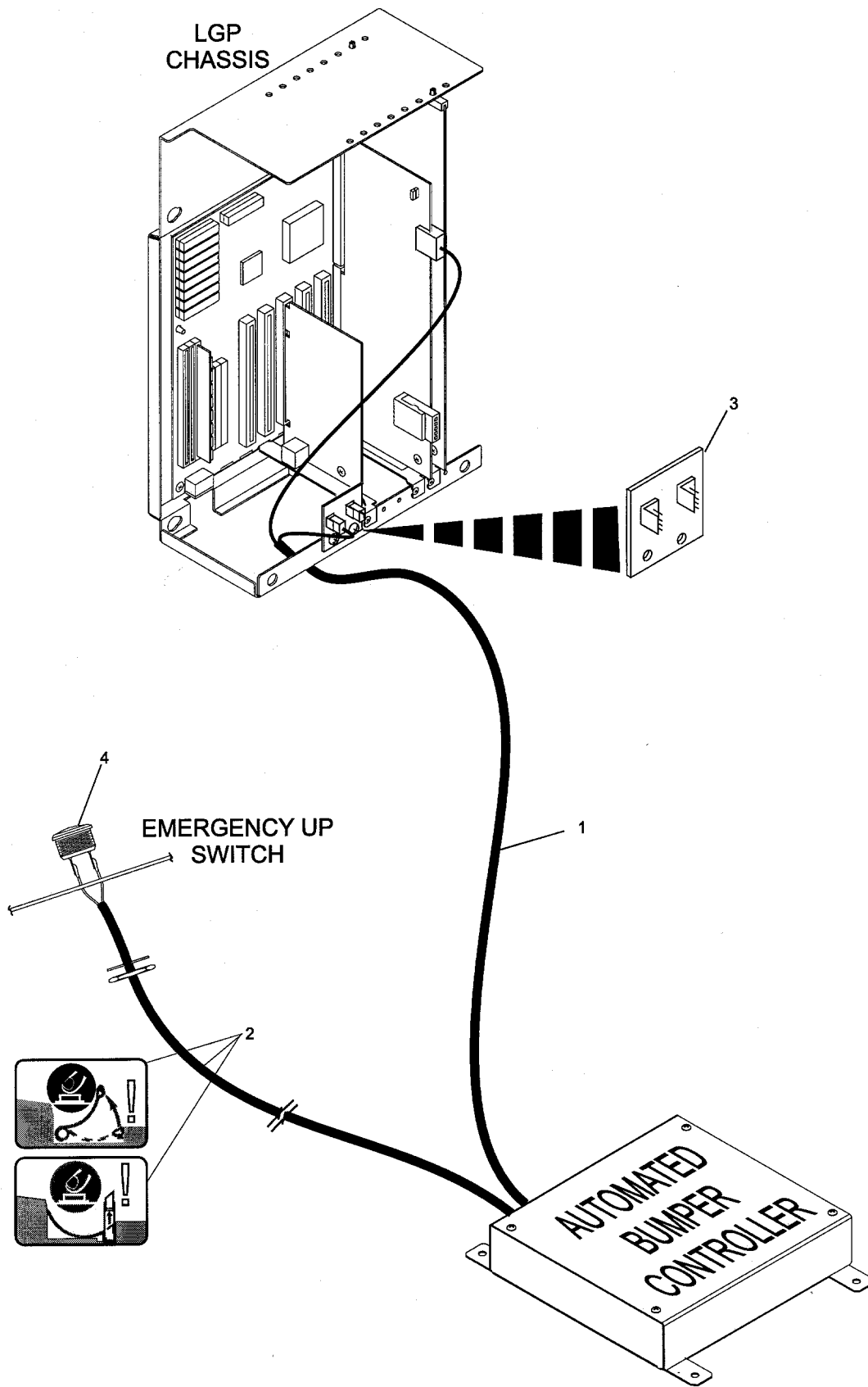


**Front Desk Controller PCB
(BallWall/Pinball Wizard)**

Index No.	Part No.	Description
1.	17-860788-000	Automated Bumper Lane Cable Assembly (Powerworx, Touchworx, and Teamworx scorers)
2.	17-860799-000	Emergency Up Switch Cable Assembly - includes Switch and Decal
3.	17-860787-000	LLAN Breakout PCB
4.	11-615521-000	Push Button Switch only

NOTE: Components identical for both BallWall and Pinball Wizard systems.

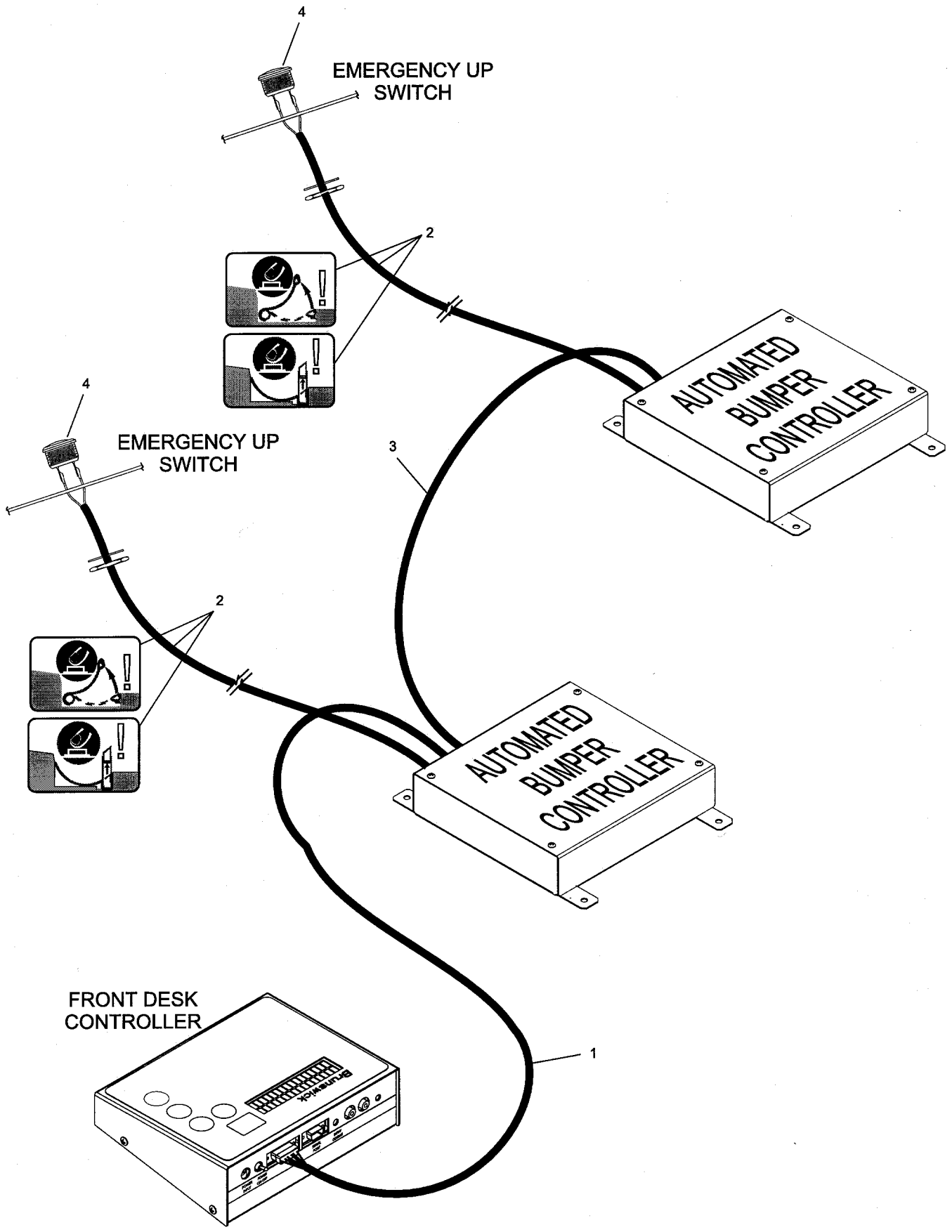
**Automated Bumper System Cables and LLAN Breakout PCB
with Frameworx Scorers**



**Automated Bumper System Cables and LLAN Breakout PCB
with Frameworx Scorers**

Index No.	Part No.	Description
1.	17-860791-000	Front Desk Controller to Controller Cable Assembly
2.	17-860799-000	Emergency Up Switch Cable Assembly - includes Switch and Decal
3.	17-860790-000	Automated Bumper Controller to Automated Bumper Controller (Daisy Chain) Cable Assembly
4.	11-615521-000	Push Button Switch only

NOTE: Components identical for both BallWall and Pinball Wizard systems.



**Automated Bumper System Cables
Stand - Alone Configuration**