

SERVICE BULLETIN

**Subject: Framework Furniture Seat Swivel to Seat Plate
Fastening Nuts**

Date: 6/1/07

Distribution: Framework Furniture Customers

Bulletin No. SB07-7A

We have received a number of customer reports that the hardware which holds the Framework seat swivel to the seat plate has come loose.

Brunswick Framework seating, shipped/installed between 10/15/2003 and 5/20/07, that uses the seat swivel, may over extended periods of usage, have an issue with this hardware coming loose.

Product affected may have a non-locking hex nut attaching the seat swivel mounting bolt to the seat plate.

If you have Framework bucket seats that use a seat swivel, and they were shipped/installed during the time frame listed above, then you need to inspect all of your seats.

To correct this issue, the 6mm hex nut should be replaced with a 6mm lock nut, part number 11-051743-001. This lock nut is available from Brunswick. Refer to *Figure 1* for locations of these fastening nuts.

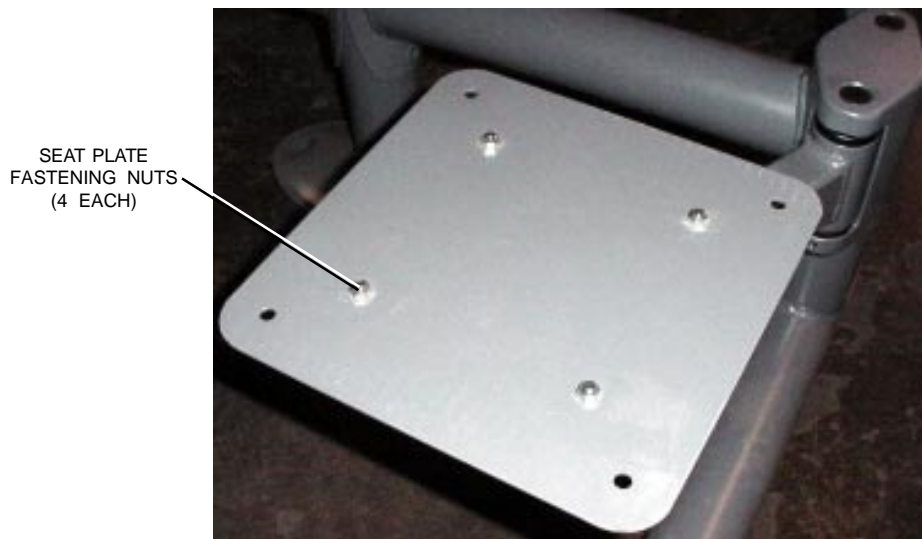


Figure 1

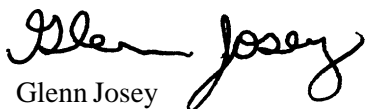
To inspect your seating, grasp the back of the seat bucket and move it side to side to make sure that the seat bucket is firmly attached to the seat plate and that the seat plate is firmly attached to the seat swivel. Seating should be checked on a quarterly basis.

During the inspection of your seating, if you find any seats that are loose and are attached using a hex nut, please contact your local Brunswick parts supplier to order the replacement parts you need.

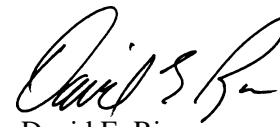
Replacement Procedure

1. Remove the 4 self tapping screws that mount the seat bucket to the seat plate.
2. Check the hardware on the seat plate. If the plate has a nut welded to the plate or units are equipped with the lock nut, simply check that the bolt and nut are tightened firmly at 15 foot pounds (20 nm) of torque.
3. If the seats have the hex nuts, discussed above, replace the hex nuts with lock nut, part number 11-051743-001. If any of the hex bolts are missing, part number 11-051035-001, can be ordered from your Brunswick part supplier.
4. Reinstall the seat bucket to the seat plate. It is **important** when installing the 4 self tapping screws that you **do not over tighten** these screws. The screws should be tightened to 25 inch pounds (2.8 nm).

If you have questions regarding this or any other Service Bulletin, please contact the Brunswick Customer Response Center at 1-800-937-2695 or 231-725-4966, FAX 231-725-4667, or E-mail crcsupport@brunbowl.com



Glenn Josey
Worldwide Installation Training/Audit Manager



David E. Rice
Director of Worldwide Service