

# SERVICE BULLETIN

**Subject: Frameworkx Masking Unit Light Bulb Specifications**

**Date: 1/17/04**

**Distribution: Frameworkx Masking Unit Customers**

**Bulletin No. SB05-1**

When changing the 1st/2nd ball light bulbs in Brunswick's Frameworkx masking units it is important to use lamps with the proper voltage and current ratings. Failure to do so may result in blown fuses in the pinsetter's electrical box. To avoid problems, the bulbs must be replaced using Brunswick part number 11-675582-002 or an equivalent, when the Masking Unit is connected to a Brunswick model A, A-2, or GS-Series Pinsetter, or 11-675523-000 or equivalent, when connected to an AMF Pinspotter. The specifications for the lamp are as follows:

**WITH BRUNSWICK PINSETTERS**

Bulb Type: 304 or 624

Base Type: Double Contact Bayonet

Size: G6

Voltage - 28V

Amperage: .3A - .37A

Wattage: 8.5W - 10W

Candle Power: 6

**WITH AMF PINSPOTTERS**

Bulb Type: 68

Base Type: Double Contact Bayonet

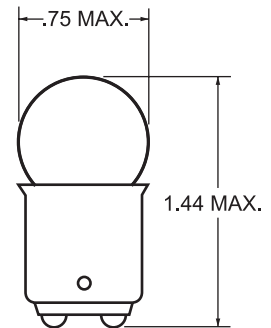
Size: G6

Voltage: 13.5V

Amperage: .59A

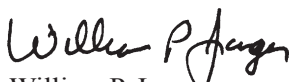
Wattage: 8W

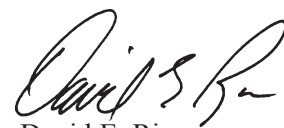
Candle Power: 4



G6 BULB SPECIFICATION

If you have questions regarding this or any other Service Bulletin, please contact the Brunswick Customer Response Center at 1-800-323-8141 or 231-725-4966, FAX 231-725-4667, or E-mail [http://www.brunswickbowling.com/contact\\_us](http://www.brunswickbowling.com/contact_us)

  
William P. Jager  
Service Product Engineer

  
David E. Rice  
Director of Worldwide Service