

Motor Controller PCB

Table of Lane Machine Fuses on Motor Controller PCB (All are in Spare Parts Kit)

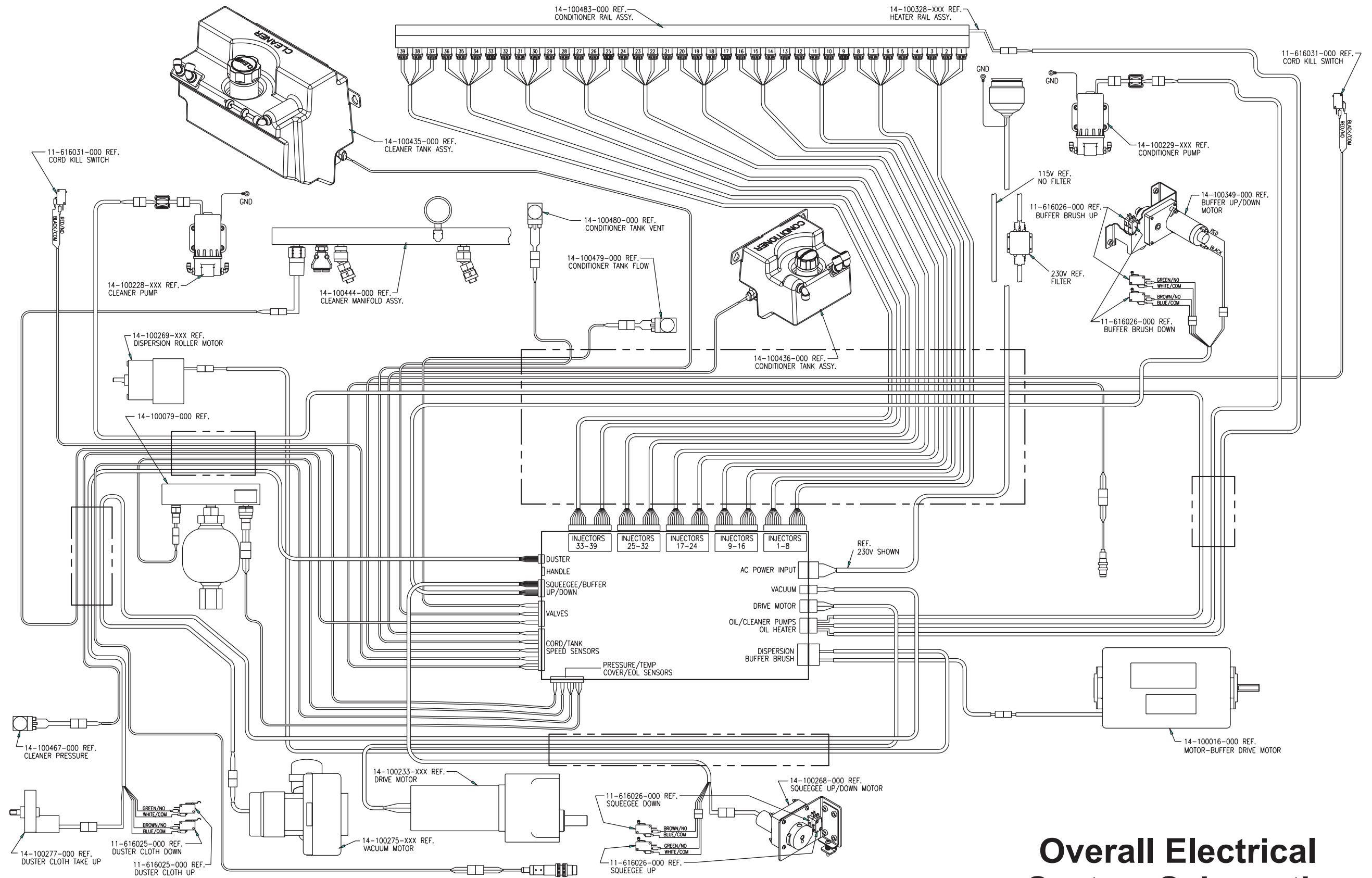
LOCATION ID	PART NO.	DESCRIPTION	APPLICATION
F10	14-860219-000	Pkg. of 5 Fuses - 1.25A, 250V, 5 x 20mm, Slow Blow	Conditioner Pump
F11	14-860218-000	Pkg. of 5 Fuses - 6.3A, 250V, 5 x 20mm, Slow Blow	Buffer Drive Motor
F12	14-860219-000	Pkg. of 5 Fuses - 1.25A, 250V, 5 x 20mm, Slow Blow	Cleaner Pump
F13	14-860216-000	Pkg. of 5 Fuses - 10A, 250V, 5 x 20mm, Slow Blow	Vacuum Motor
F14	14-860215-000	Pkg. of 5 Fuses - 3.15A, 250V, 5 x 20mm, Slow Blow	Conditioner Heater
F15	14-860219-000	Pkg. of 5 Fuses - 1.25A, 250V, 5 x 20mm, Slow Blow	Dispersion Roller Motor
F16	14-860214-000	Pkg. of 5 Fuses - 4.0A, 250V, 5 x 20mm, Slow Blow	Traction Drive Motor
F17	14-860215-000	Pkg. of 5 Fuses - 3.15A, 250V, 5 x 20mm, Slow Blow	Spare
F18	14-860217-000	Pkg. of 5 Fuses - 8A, 250V, 5 x 20mm, Slow Blow	Buffer Drive Motor Starter

Table of Lane Machine Output LEDs on Motor Controller PCB

LOCATION ID	APPLICATION
D10	Not Used
D15	Cleaner Bypass Valve - DC
D17	Not Used
D19	Conditioner Vent Valve - DC
D21	Conditioner Pressure Control Valve - DC
D23	Buffer Lift Motor - DC
D24	Squeegee Lift Motor - DC
D25	Not Used
D31	Duster Cloth Motor - DC
D33	Duster Cloth Motor Reverse - DC
D34	Phase On - Switch AC Power Relay On
D36	Traction Drive Motor Reverse - DC
D38	Traction Drive Motor Brake - DC
D54	Conditioner Pump - AC
D55	Buffer Drive Motor - AC
D56	Cleaner Pump - AC
D57	Traction Drive Motor Controller - AC
D58	Conditioner Heater - AC
D59	Dispersion Roller Motor - AC
D60	Vacuum Motor - AC

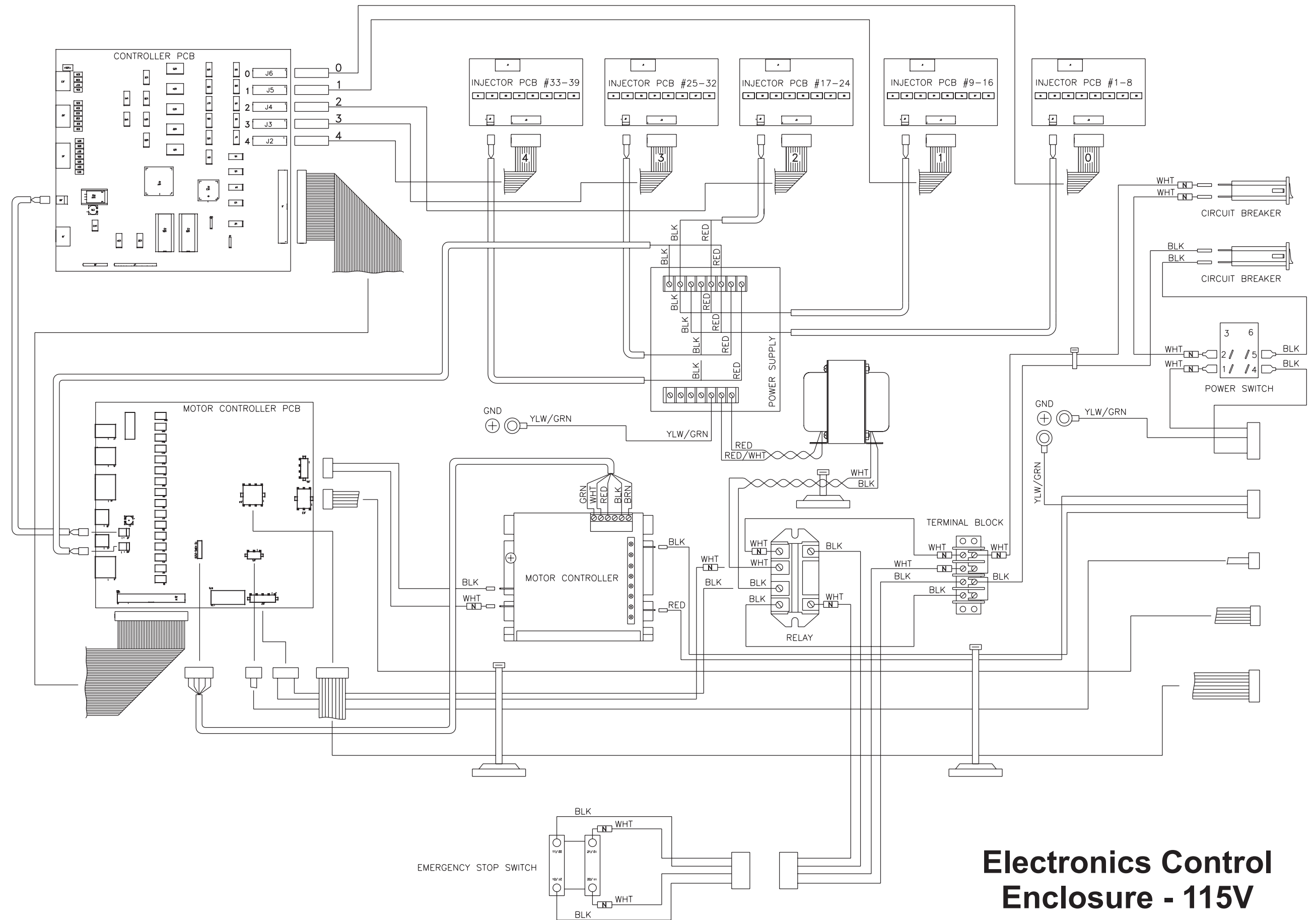
Fuse Locations & Specifications and Output LED Locations

Intentionally Blank



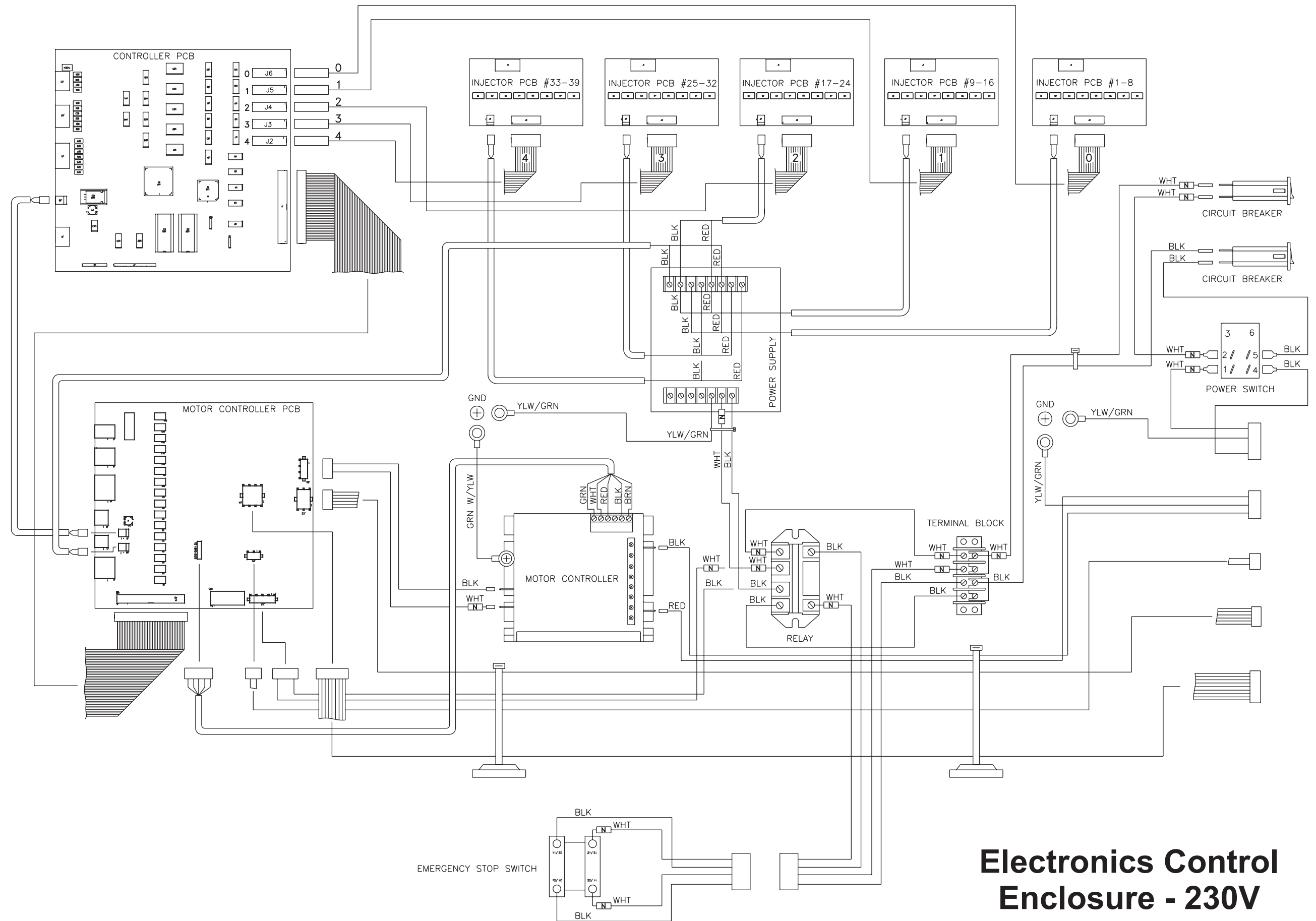
Overall Electrical System Schematic

Intentionally Blank



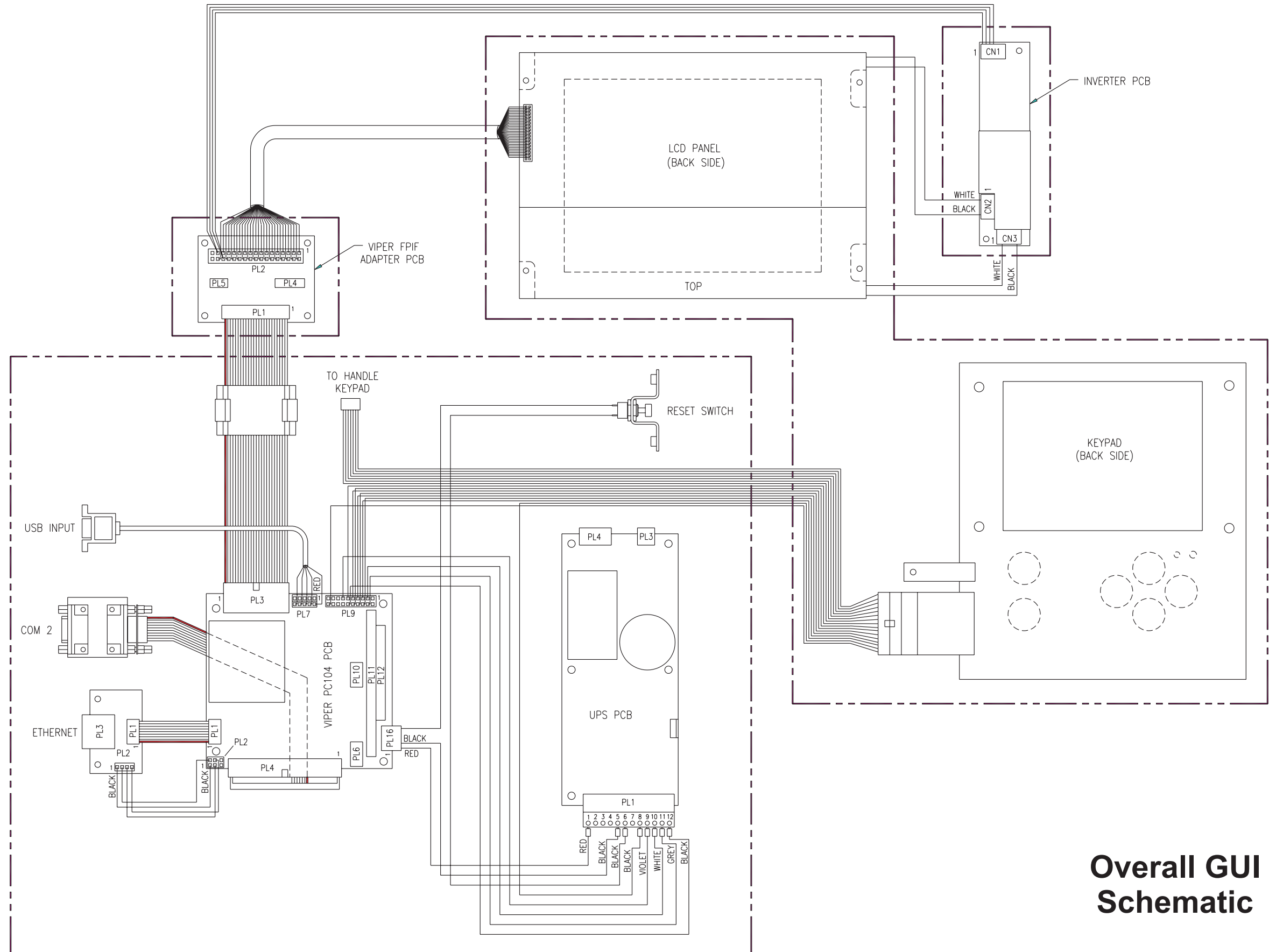
Electronics Control Enclosure - 115V

Intentionally Blank



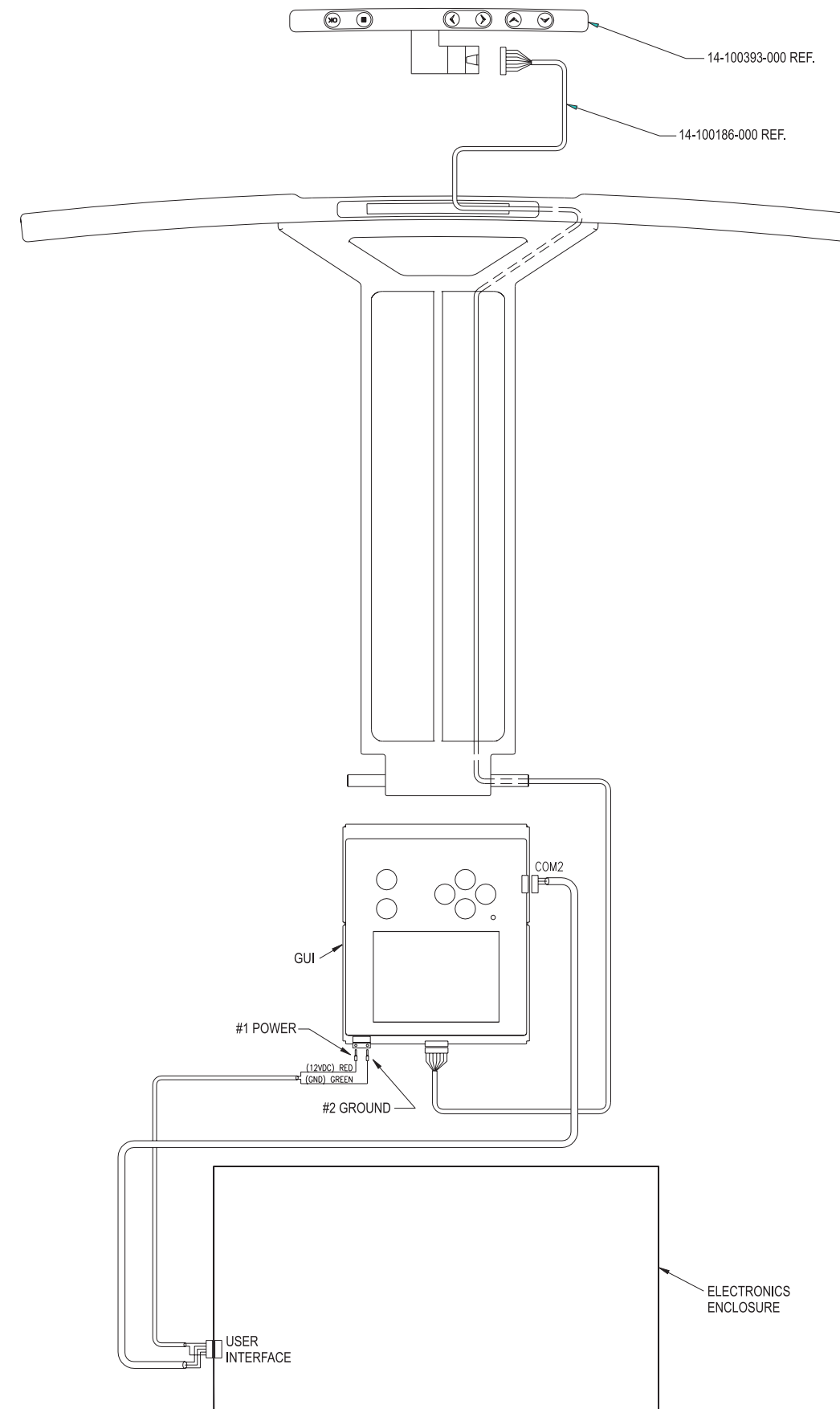
Electronics Control Enclosure - 230V

Intentionally Blank



Overall GUI Schematic

Intentionally Blank



GUI & Handle Keypad Schematic

Intentionally Blank