

Brunswick® 

525 West Laketon Avenue
Muskegon, MI 49441 2697 USA
1-800-YES-BOWL · 231-725-4966
www.BowlwithBrunswick.com

EUROPE

Brunswick GmbH
Ginnheimer Strasse 6
D-65760 Eschborn Germany
+0049.(0)6196.47.27.13

ASIA PACIFIC

Brunswick Bowling & Billiards
Rm. 2610 Miramar Tower · 132 Nathan Road
Tsimshatsui, Kowloon Hong Kong
+852-2367-8080

Pepsi and the Pepsi Globe design are registered trademarks of PepsiCo, Inc.
Barbie and associated trademarks are owned by and used under license from
Mattel, Inc. ©2010 Mattel, Inc. All Rights Reserved. Hello Kitty © 1976, 2010
Sanrio Co., Ltd. National Breast Cancer Foundation, Inc®. Viz-A-Ball is a registered
trademark of Brunswick Bowling & Billiards Corporation. U.S. patent number
6,524,419 and 6,691,759

Brunswick is committed to continuous improvement. As a result, all specifications
are subject to change. Not for reproduction without the express written consent of
Brunswick Bowling & Billiards Corporation.

©2010 Brunswick Bowling & Billiards Corporation. Printed in the USA.
Form No. #0410-12

2010 - 2011 BALL CATALOG

Brunswick® 
www.BowlwithBrunswick.com



BALL LINES

PP	PRO PERFORMANCE	4-9
HP	HIGH PERFORMANCE	10-13
AVP	ADVANCED PERFORMANCE	14-17
AFP	AFFORDABLE PERFORMANCE	18-21
ELP	ENTRY LEVEL PERFORMANCE	22-25
PPA	POLYESTER PINPOINT ACCURACY	26-33
BC	BALL COMPARISON & SPECIFICATION CHARTS	34-35
PSG	PRO SHOP GOODS	36-39



Pro performance

**"GREAT BOWLERS REPEAT SHOTS. REPEATING SHOTS
CAN ONLY HAPPEN BY STAYING IN BALANCE."**

— BRAD ANGELO —

EVIL SIEGE™

The Evil Siege unites the new Propel™ Pearl coverstock and the proven MACE core to produce a ball motion that is strong in the mid-lane and aggressive on the backend. The Evil Siege is the ball when your game needs help battling medium to oily conditions and poor pin action.

60-105248



MACE™ CORE

Mechanical Asymmetric Core Engineering. Designed as a two-component elliptical core system—dynamically the strongest asymmetric core ever produced for a Brunswick reactive ball.

PRO TIP

"The Evil Siege is clean in the front part of the lane. It gives me more movement towards the pins and better carry."

Carolyn Dorin-Ballard

SIEGE™

Siege uses Propel coverstock, an evolutionary coverstock designed to improve mid-lane and backend traction on today's slicker surfaces. Propel coverstock combined with the new MACE core delivers both length and strength. The strong traction in the oil keeps the Siege on target. The aggressive hook on the backend increases pin action and delivers awesome hitting power. Take the Siege to battle on difficult oil conditions and raise your game.

60-105214



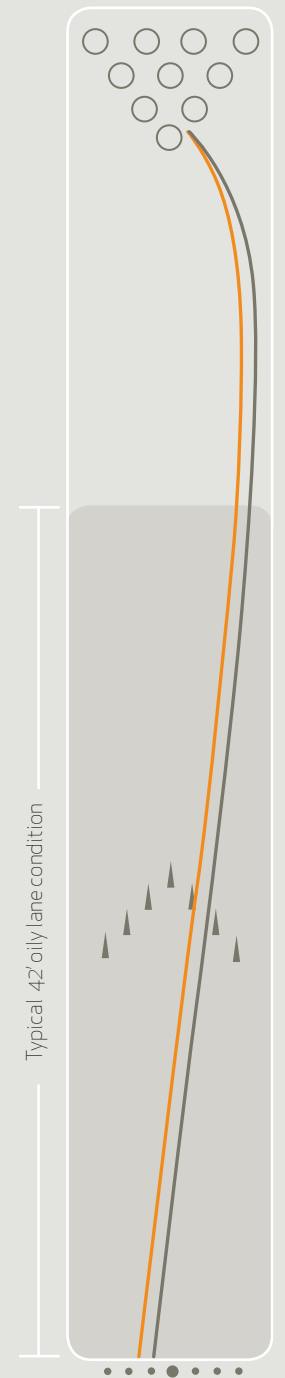
PRO TIP

"It has arrived, a ball that allows you to control any part of the lane and attacks the pins with more force than you can handle."

Sean Rash

PRO PERFORMANCE	COVERSTOCK	FACTORY FINISH	HOOK POTENTIAL	LENGTH	SHAPE	RG-MAX	RG-MIN	RG-DIFF	RG-ASYM	RG-AVG	WEIGHTS
Evil Siege	Propel Pearl	4,000 Siaair Micro Pad	160	110	90	2.530	2.474	0.056	0.030	2.8	12-16
Siege	Propel	1,000 Siaair Micro Pad	170	100	85	2.530	2.474	0.056	0.030	2.8	12-16

STRIKE LINES



- Siege
- Evil Siege

C•(SYSTEM) v4.5[™] — NEW

The C•(System) v4.5,[™] with Carmen Salvino's exclusive Chemical Friction Technology and its Rough Buff finish will offer a lower friction factor alternative to the C•(System) 3.5, with similar response time to friction. The new C•(System) v4.5 is best used on medium to oily lane conditions when you need to use a breakpoint further down the lane with a quick response motion to increase pin carry. It's off the periodic charts.

60-105314



SYMMETRIC I - BLOCK CORE

The new Symmetric I - Block core is a modification of the Asymmetric I - Block core. By creating an asymmetric base with an asymmetric flip block on perpendicular axes the two asymmetries cancel each other out making the core shape symmetric. The core shape was also thinned and stretched to increase the RG min while maintaining the overall differential.

PRO TIP

"I am more excited about the C•(System) v4.5 than I have been about any ball in a long time. I threw it on three PBA patterns and found it to be something special!"

Brad Angelo

C•(SYSTEM) 3.5[™]

CFT 3.5 is the next evolution in Chemical Friction Technology. The CFT 3.5 coverstock has a higher friction factor than the original CFT 2.5, which quickens the response time, improves down lane traction and increases the overall hook.

60-105254



ASYMMETRIC I - BLOCK CORE

The Asymmetric I - Block core was engineered specifically for the CFT 2.5 coverstock to create maximum forgiveness, strong entry angles along with versatile drilling layouts.

PRO TIP

"This ball gives me strong mid-lane and huge backend when I want to move left and open up the lanes."

Tom Smallwood

C•(SYSTEM) 2.5[™]

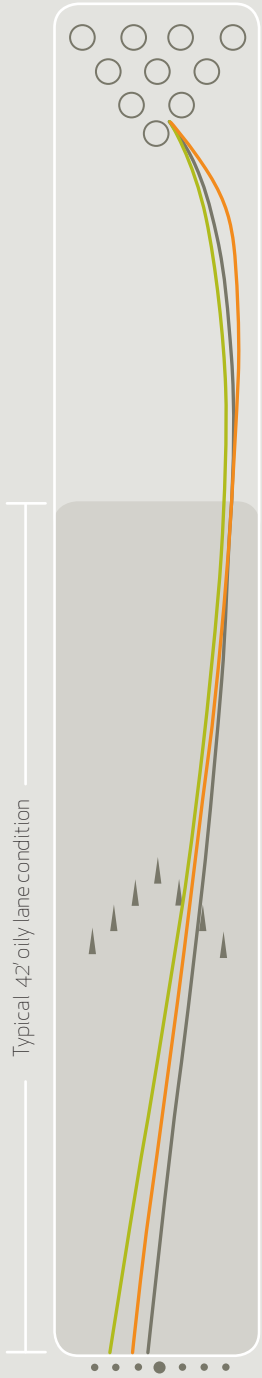
The chemistry was uniquely designed to have shaped molecular structures that produce a high coefficient of friction. Because of the shape of the molecule, when the ball goes into rolling friction, which occurs at the back part of the lane, slippage is eliminated and the ball will give you maximum entry and carry.

60-105240



CFT PERFORMANCE	COVERSTOCK	FACTORY FINISH	HOOK POTENTIAL	LENGTH	SHAPE	RG-MAX	RG-MIN	RG-DIFF	RG-ASYM	RG-AVG	WEIGHTS
C•(System) v4.5	CFT v4.5	500 Siaair Micro Pad; Rough Buff	160	110	95	2.608	2.555	0.053	–	5.5	12-16
C•(System) 3.5	CFT 3.5 Reactive	500; 4,000 Siaair Micro Pad	170	100	95	2.570	2.520	0.050	0.017	4.4	12-16
C•(System) 2.5	CFT 2.5 Reactive	500; 4,000 Siaair Micro Pad	155	105	90	2.570	2.520	0.050	0.017	4.4	12-16

STRIKE LINES



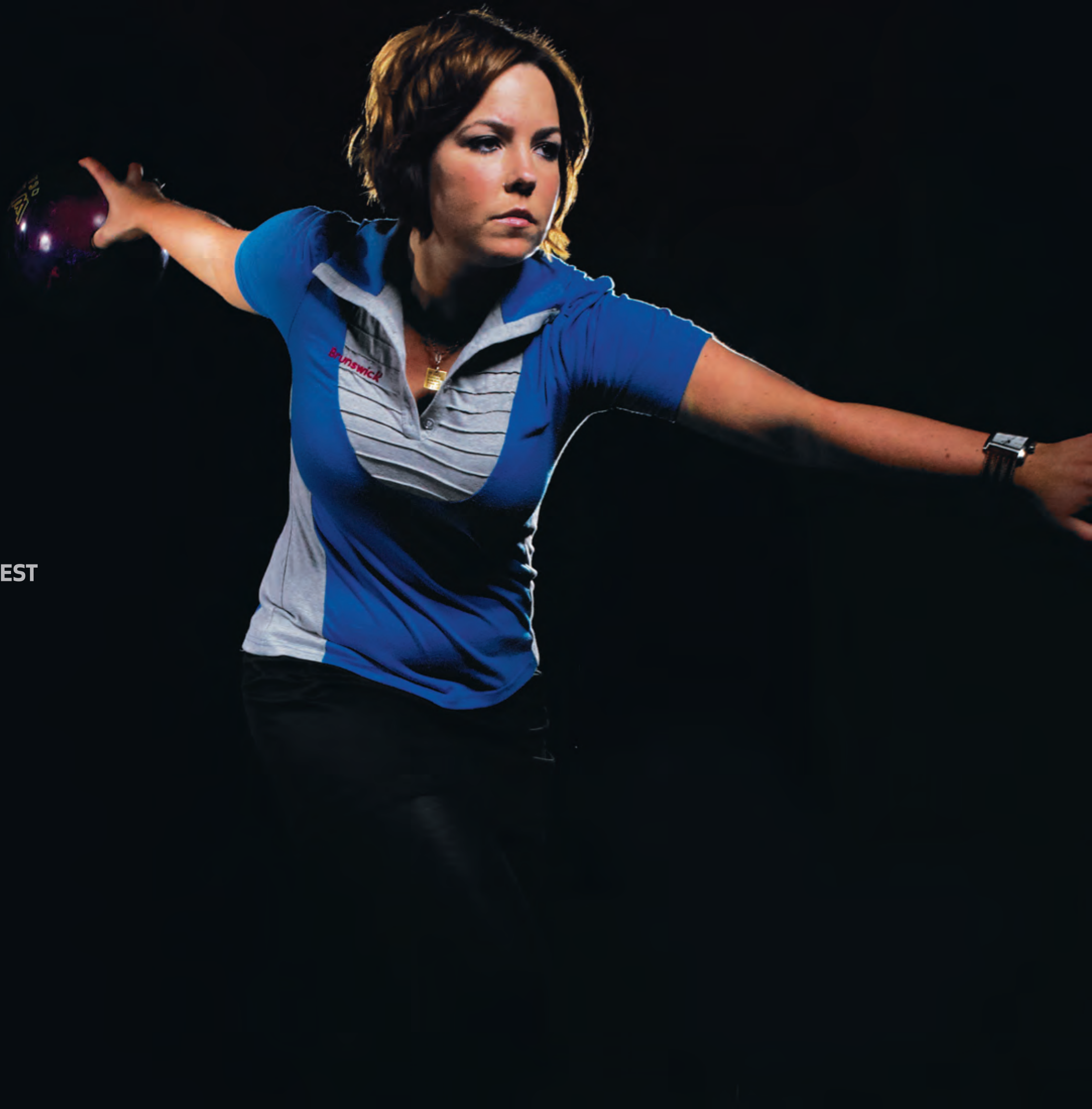
- C•(System) 3.5
- C•(System) v4.5
- C•(System) 2.5



High performance

**"WHEN CHOOSING A BALL, USE THE HEAVIEST
BALL YOU CAN SAFELY HANDLE."**

— DIANDRA ASBATY —





REVOLVER™

— NEW

The Revolver, with its reformulated ConneXion Grip™ coverstock and 4,000 Siaair Micro Pad finish, will provide good length with a strong continuous backend reaction that matches up on medium to oily lane conditions, providing deadly accuracy for a wide range of bowling styles. Fire away.

60-105312



JACK CORE

The Jack core was designed as a low RG symmetric core with a high differential. The low RG engages in the mid-lane assisting in ball motion, and the high differential increases track flare potential giving the ball more opportunity to grip the backend.

PRO TIP

"The Revolver has a good amount of length while saving energy for a stronger backend reaction. It's very predictable."

Stefanie Nation.

WILD CARD™

The Wild Card utilizes ConneXion™ coverstock known for its unbelievable traction response from foul line to head pin. The aggressive connection of the Wild Card to the lane surface inspires confidence in the ball reaction that allows bowlers to play the lanes the way they want to.

60-105246



PARAGON CORE

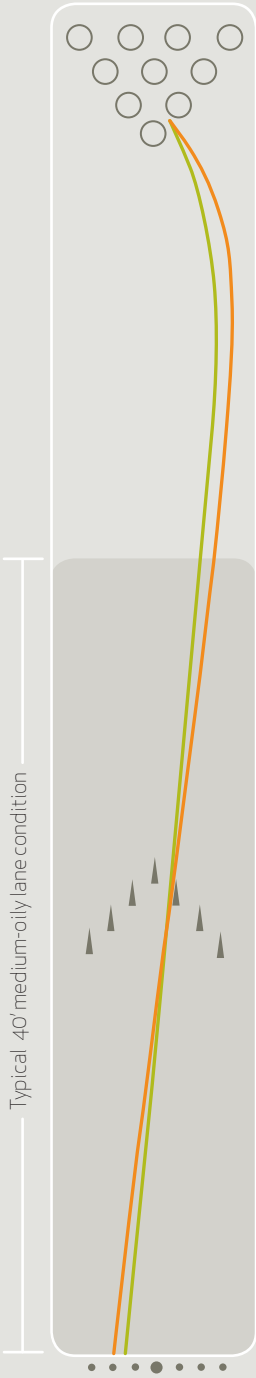
The new ultra-low RG Paragon core was designed with two intentions; lower the RG to create a faster revving core with improved mid-lane traction; and raise the RG differential to increase the track flare potential and generate more overall hook.

PRO TIP

"The Wild Card is a very strong ball down lane. When I bowl on a condition with a lot of oil, I can go to my Wild Card, and know I'm going to get a strong backend motion."

Johnny Petraglia.

HIGH PERFORMANCE	COVERSTOCK	FACTORY FINISH	HOOK POTENTIAL	LENGTH	SHAPE	RG-MAX	RG-MIN	RG-DIFF	RG-AVG	WEIGHTS
Revolver	ConneXion Grip	500; 4,000 Siaair Micro Pad	165	105	85	2.558	2.504	0.054	3.8	12-16
Wild Card	ConneXion	2,000 Siaair Micro Pad	165	95	75	2.514	2.469	0.045	2.6	12-16



- Revolver
- Wild Card



Advanced performance

**"THROUGH THE APPROACH, YOUR HEAD SHOULD
REMAIN STEADY AND YOUR EYES SHOULD
FOCUS ON A TARGET."**

— SEAN RASH —



ANACONDA[™] — NEW

With its Rough Buff finish, and aggressive Activator Plus[™] coverstock providing durability and longevity of ball reaction, the Anaconda[™] will rev quickly in the mid-lane with a strong continuous backend reaction that matches up on medium to medium-oily lane conditions for a wide range of bowling styles.

60-105310



INFERNO CORE

The Anaconda uses an updated version of the original Inferno core. The ultra low RG Inferno core revs quickly providing mid-lane traction control with a strong predictable backend motion.

PRO TIP

"The Anaconda is one of the smoothest rolling balls we have. This ball has a very even arc that is extremely controllable on any condition."

Parker Bohn III

DIAMONDBACK[™]

The first ball with Activator Solid[™] coverstock available at the Advanced Performance price point. Activator Solid coverstock is a proven formula that provides strong downlane recovery, longevity of ball reaction, and unprecedented durability with superior resistance to cracking. This ball is clean through the front with an aggressive move at the breakpoint.

60-105244



RATTLER[™]

This low RG, multi-sided Rocket[™] core, combined with original Activator[™] coverstock, produces a ball reaction that is unmatched at the Advanced Performance price point. Clean through the front with an aggressive move at the breakpoint, the Rattler delivers amazing bang for the buck. There isn't another ball in this class that's even close.

60-104976



PYTHON[™]

With a more direct line of attack on the lane, a fast revving core and constricting power on the pins – the Python provides a secure ball reaction at the Advanced Performance price point. For the bowler who wants to play straighter angles with predictable power.

60-105210



MULTI-SIDED ROCKET CORE

This low RG core helps the ball get into an earlier roll creating more mid-lane recovery on today's high viscosity oils and hard synthetic lane surfaces.

PRO TIP

"This ball has a smooth motion and is very predictable down lane. I trust it to pick up an earlier roll and continue through the pins without losing energy."

Stefanie Nation

PRO TIP

"I use my Rattler when I need to clear the front part of the lane, the heads, and finish with an aggressive backend reaction."

Carolyn Dorin-Ballard



LOW RG CORE

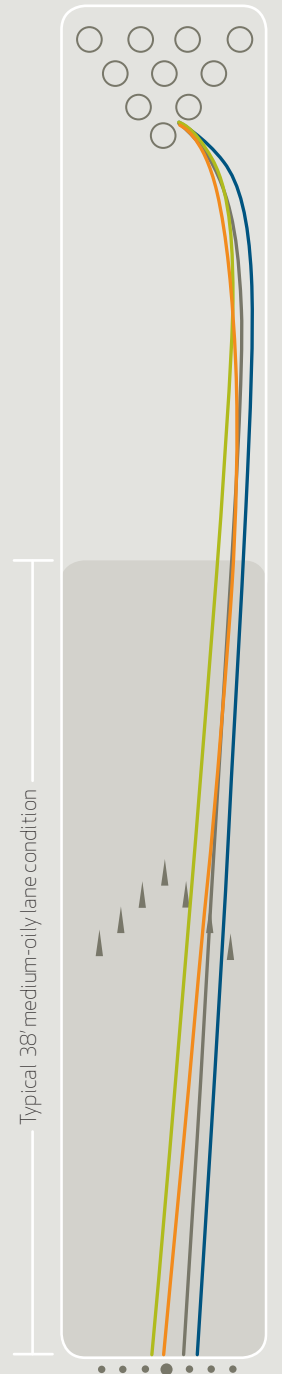
The Original Inferno[®] with an adjusted weight distribution between the inner and outer core to raise the overall RG, aid in clearing the fronts, rev in the mid-lane and deliver a more continuous backend motion.

PRO TIP

"This is the first ball out of my bag. I can tell what part of the lane I'm going to play by throwing it three or four times."

Sean Rash

STRIKE LINES



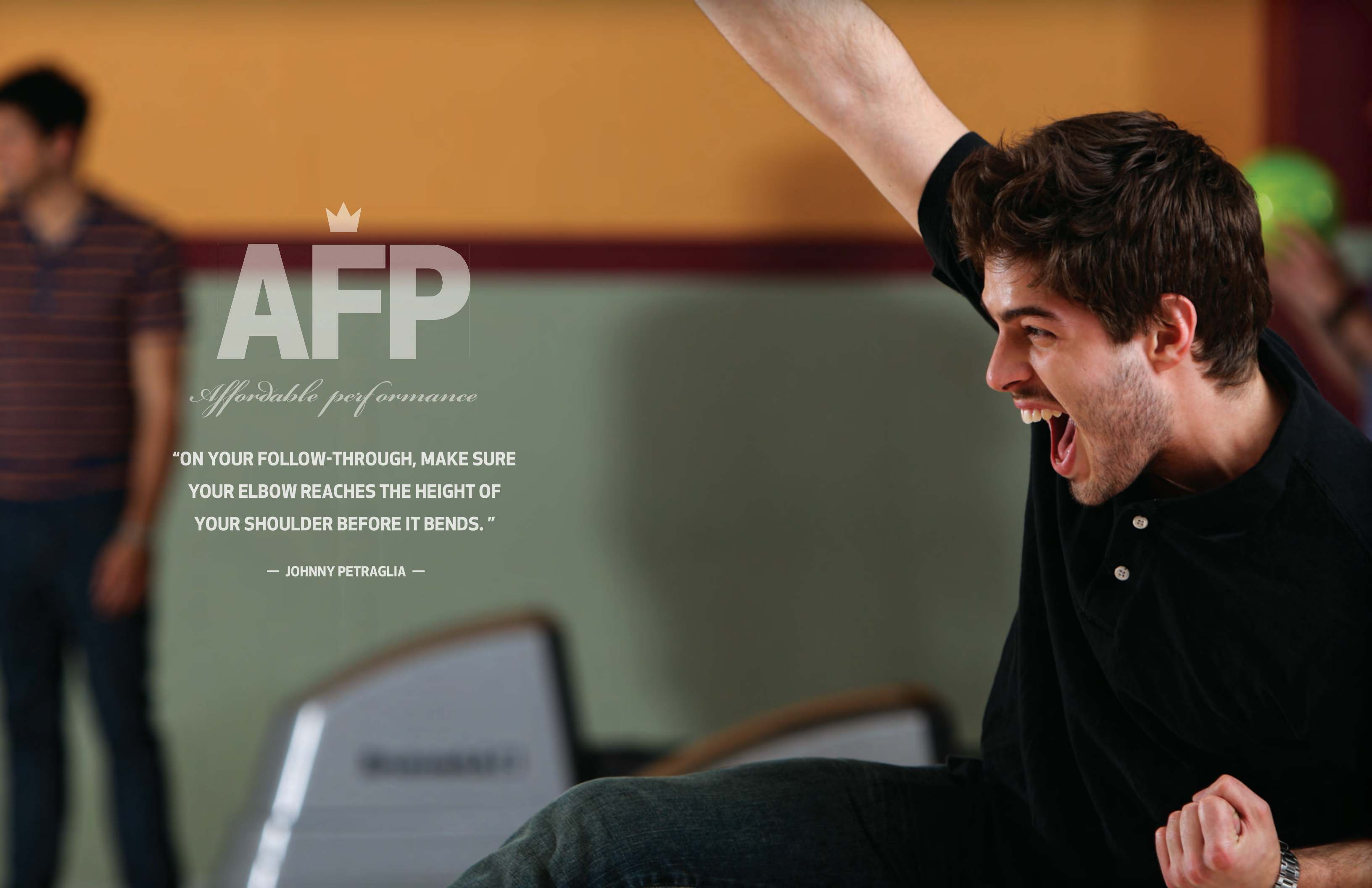
- Diamondback
- Anaconda
- Python
- Rattler



Affordable performance

**"ON YOUR FOLLOW-THROUGH, MAKE SURE
YOUR ELBOW REACHES THE HEIGHT OF
YOUR SHOULDER BEFORE IT BENDS. "**

— JOHNNY PETRAGLIA —



AVALANCHE™ URETHANE — NEW

Designed for extra length and a smooth predictable ball motion the Avalanche Urethane is ideal for lighter amounts of oil and a more “down the boards” line to the pocket. The extra length and predictable ball motion will keep you on top of your game.

60-105308



LIGHT BULB CORE

All Avalanche balls use the acclaimed Teal Rhino® Pro Light Bulb core. This core and its Danger Zone® modification were at the heart of two of the most successful balls of all time.

PRO TIP

“It’s a great tool for bowlers that need a smooth, controllable reaction on drier lanes.”

Chuck Gardner,
PBA Pro Tour
Product Specialist

AVALANCHE BLACK/ELECTRIC GREEN

The Avalanche Black/Electric Green uses PowrKoil 18™ Pearl coverstock, the most successful reactive formulation in the bowling industry, to skid more in the oil and create a quicker response to friction than the Avalanche Solid.

60-105225



PRO TIP

“Whether the lanes are hooking early or you’re on a drier lane condition, this is a perfect ball. It finishes very well without overreacting on the backend.”

Johnny Petraglia.

AVALANCHE SLIDE

The Avalanche Slide uses the PowrKoil XD™ Reactive coverstock, designed to provide extra distance (XD) through the heads in comparison with the traditional PowrKoil coverstocks. Combined with the Light Bulb core, this coverstock gets through the heads cleanly, even on broken-down lane conditions, while maintaining a strong backend reaction.

60-104965



PRO TIP

“I used the Avalanche Slide to win my first PBA title during games 1 and 2. It’s a medium-friction factor ball with a medium to quick response time.”

Brad Angelo

AVALANCHE SOLID

The Avalanche Solid uses PowrKoil 18™ Solid coverstock, the most successful reactive formulation in the bowling industry, to traction more in the oil and create a higher hook potential.

60-104771



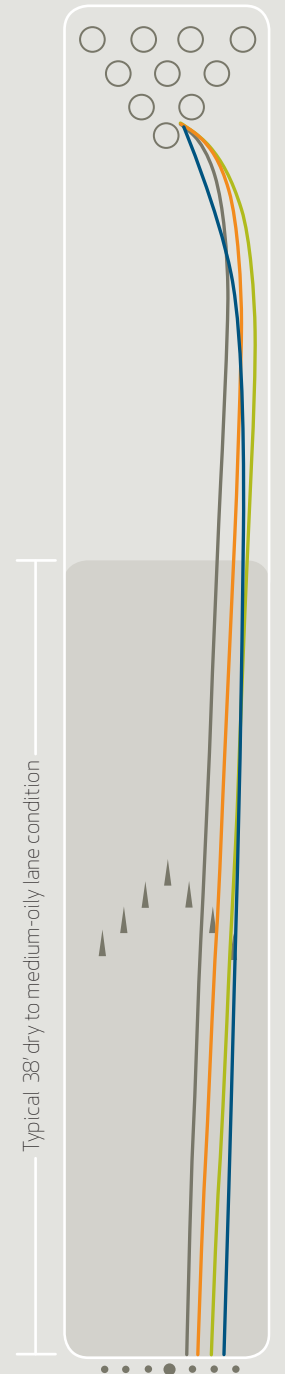
PRO TIP

“When the oil volumes are low and I need a smooth reaction, I use my Avalanche Solid.”

Sean Rash

AFFORDABLE PERFORMANCE	COVERSTOCK	FACTORY FINISH	HOOK POTENTIAL	LENGTH	SHAPE	RG-MAX	RG-MIN	RG-DIFF	RG-AVG	WEIGHTS
Avalanche Urethane	Urethane	Rough Buff; High Gloss Polish	50	180	50	2.548	2.524	0.024	4.2	10-16
Avalanche BLK/EGRN	PowrKoil 18 Pearl	Rough Buff; High Gloss Polish	85	140	75	2.548	2.524	0.024	4.2	10-16
Avalanche Slide	PowrKoil XD	Rough Buff; High Gloss Polish	75	155	80	2.548	2.524	0.024	4.2	10-16
Avalanche Solid	PowrKoil 18 Solid	Rough Buff	95	125	70	2.548	2.524	0.024	4.2	10-16

STRIKE LINES



- Avalanche Solid
- Avalanche BLK/EGRN
- Avalanche Slide
- Avalanche Urethane

A man and a woman are smiling and embracing each other. The man is wearing a blue and white plaid shirt, and the woman is wearing a red top. In the foreground, a bowling ball with a yellow and purple marbled pattern is visible. The background is a blurred indoor setting, likely a bowling alley.

ELP

Entry level performance

**"IN PRACTICE SESSIONS, DON'T JUST AUTOMATICALLY
HIT THE RESET BUTTON IF WOOD IS LEFT STANDING;
ROLL YOUR CONVERSION SHOT."**

— PARKER BOHN III —

SLINGSHOT® — NEW

The Slingshot features the popular Brunswick PowrKoil 17™ Reactive coverstock. PowrKoil 17 is a mild reactive coverstock that will create length with a medium response to friction on dry to medium-dry lane conditions. The Slingshot is available in a variety of bright pearlized colors to match any bowler's style.



2-PIECE SHAPED CORE

The first ball in its class with a two-piece shaped dynamic core that offers multiple drilling options and stronger hitting power compared to traditional three-piece pancake weight-block cores available at this price point.

PRO TIP

"Clean, clean, clean! It shoots through the front with no effort and has a smooth continuous move on the backend of the lane."

Tom Smallwood



NEW
Silver Pearl/Black Pearl
61-105280



NEW
Gold Pearl/Blue Pearl
60-105282



NEW
Lavendar Pearl/Lime Pearl
60-105284



NEW
Merlot Pearl/Gold Pearl
61-105283

NEW — Red Pearl/Silver Pearl — 60-105281

ENTRY LEVEL PERFORMANCE	COVERSTOCK	FACTORY FINISH	HOOK POTENTIAL	LENGTH	SHAPE	RG-MAX	RG-MIN	RG-DIFF	RG-AVG	WEIGHTS
Slingshot	PowrKoil 17	Rough Buff; High Gloss Polish	60	160	65	2.603	2.586	0.017	5.9	10-16

STRIKE LINES



Typical 38' dry to medium-oily lane condition

A young child with brown hair, wearing a bright blue short-sleeved shirt and brown cargo shorts, stands on a wooden bowling lane. The child is holding a green bowling ball with both hands, looking down at it intently. The background shows the blurred lanes of a bowling alley with purple and green walls.

PPA

Polyester pinpoint accuracy

**"GOOD FUNDAMENTALS, PRACTICE AND ATTITUDE
MAKE FOR A WINNING COMBINATION."**

— CAROLYN DORIN-BALLARD —



TZONE® GLOW — ALL NEW COLORS

It's always good to have a spare, and now our already impressive TZone line is better than ever with improved colors that glow even brighter under black light. Get pinpoint accuracy and show your style.



BULLET CORE

A small-shaped version of the high-tech, two-piece, the bullet core provides great weight distribution with added track flare.

PRO TIP

"A good ball for beginners and intermediate players, excellent for extreme hooking lanes, and the perfect ball to eliminate lane conditions to pick up spares. This ball is a must for every player at any level."

Parker Bohn III



NEW — **Patriot Blaze** — Weight options 6, 8-16 — 60-105300



NEW
Green Envy

Weight options 6, 8-16
60-105298



NEW
Mango Swirl

Weight options 6, 8-16
60-105301



NEW
Pink Bliss

Weight options 6, 8-14
60-105299



NEW
Magenta Smoke

Weight options 6, 8-16
60-105297



NEW
Indigo Swirl

Weight options 6, 8-16
60-105302



NEW
Black Currant

Weight options 6, 8-16
60-105303



NEW
Oceanside

Weight options 6, 8-16
60-105296



NEW
Peace Themed

Weight options 6, 8-14
60-105316



Skull Themed

Weight options 6, 8-16
60-104994

THEMED BALLS

VIZ-A-BALL[®]

Limited-edition graphics. Bowling's works of art.

Weight options: 6, 8, 10, 12, 14-16



NEW
KALEIDOSCOPE[®] GLOW
60-4005308
Available Worldwide



NEW
GRIM REAPER GLOW
60-400559
Available Worldwide



NEW
GRIZZLY BEAR
60-400560
Available Worldwide



NEW
SHARK GLOW
60-400561
Available Worldwide



NEW
HELLO KITTY COLLAGE GLOW
60-400556
Available in U.S., Canada & Asia



NEW
HELLO KITTY GLOW
60-400557
Available in U.S., Canada & Asia



OCEAN LIFE GLOW
60-400396
Available Worldwide



CAMOUFLAGE
60-400438
Available Worldwide



PINK CAMOUFLAGE
60-400492
Available Worldwide



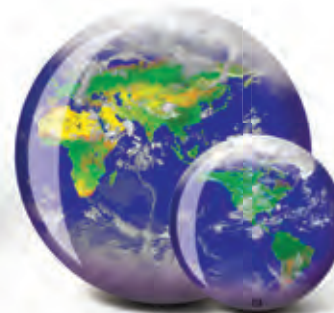
SPIRAL GLOW
60-400440
Available Worldwide



**RED/WHITE/BLUE
SPIRAL GLOW**
60-400477
Available Worldwide



AMERICANA GLOW
60-400489
Available Worldwide



WORLD GLOW
60-400507
Available Worldwide



LIZARD EYE GLOW
60-400528
Available Worldwide



300 GAME GLOW
60-400518
Available Worldwide



800 SERIES GLOW
60-400519
Available Worldwide



WHITE BALL
60-104221
Available Worldwide



LEOPARD
60-400021
Available Worldwide



NEW - IN-VIZABALL - 60-400535 - Available Worldwide



COW GLOW
60-400240
Available Worldwide



SMILEY FACE
60-400245
Available Worldwide



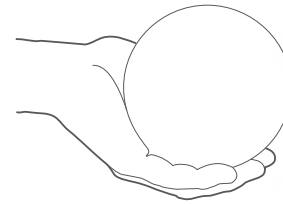
FLAME
60-400287
Available Worldwide



PEPSI® GLOW
60-400230
Available Worldwide

MINI VIZ-A-BALL®

Fun, collectible miniature balls.



BREAST CANCER AWARENESS
60-610032
Available Worldwide



GAME FISHING GLOW
60-400529
Available Worldwide



HEARTS GLOW
60-400534
Available Worldwide



BARBIE GLOW
60-400549
Available in U.S. & Canada



SNAKE GLOW
60-400527
Available Worldwide



300 GAME
60-610039
Available Worldwide



800 SERIES
60-610040
Available Worldwide



BUTTERFLIES GLOW
60-400526
Available Worldwide



BREAST CANCER AWARENESS
60-400487
Available Worldwide
Proud sponsor of the National Breast Cancer Foundation®



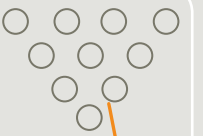
BRUNSWICK
60-400353
Available Worldwide



IT'S A BOY
60-610012
Available Worldwide



IT'S A GIRL
60-610011
Available Worldwide



BALL COMPARISON CHART

DRY LANE CONDITIONS				DRY TO MEDIUM LANE CONDITIONS					MEDIUM TO OILY LANE CONDITIONS								OILY LANE CONDITIONS							
	A	B	C	D	E	F	G	H	I	QUICK RESPONSE	J	K	L	M	N	O	P	Q	R	S	T			
1																							1	
2																		C-(SYSTEM) v4.5					2	
3																				C-(SYSTEM) 3.5***			3	
4																		C-(SYSTEM) 2.5**					4	
5																				REVOLVER			5	
6																							6	
7															RATTLER***				EVIL SIEGE***				7	
8						AVALANCHE SLIDE															SIEGE***		8	
9																			DIAMONDBACK				9	
10									AVALANCHE BLACK/EGREEN							PYTHON***							10	
11											ARC												11	
12																			ANACONDA					12
13												AVALANCHE BLUE/RED												13
14																								14
15																					WILD CARD***			15
16																								16
17				SLINGSHOT																				17
18																								18
19																							19	
LOW					HOOK POTENTIAL					HOOK POTENTIAL								HIGH						
20																						20		
21																						21		
22																						22		
23																						23		
24		AVALANCHE URETHANE																				24		
25																						25		
26																						26		
27										ARC												27		
28																							28	
29																							29	
30																							30	
31																							31	
32																							32	
33																							33	
34																							34	
35																							35	
36																							36	
37										SLOW RESPONSE												37		
38																							38	
39																							39	
40																							40	
	A	B	C	D	E	F	G	H	I			J	K	L	M	N	O	P	Q	R	S	T		
	DRY LANE CONDITIONS				DRY TO MEDIUM LANE CONDITIONS						MEDIUM TO OILY LANE CONDITIONS								OILY LANE CONDITIONS					

* Evenly wet sand to a 400-grit finish then apply Brunswick's Factory Finish "High Gloss Polish" - **Evenly wet sand to a 200-grit finish then apply Brunswick's Factory Finish "Rough Buff" - ***Performance numbers were revised in May 2010 based on customer feedback

BALL SPECIFICATION CHART

PERFORMANCE	BALL	COVERSTOCK	FINAL FINISH	HOOK POTENTIAL	LENGTH	SHAPE	RG-MAX	RG-MIN	RG-DIFF	RG ASYM	RG-AVG	WEIGHTS
Pro	Evil Siege™	Propel™ Pearl	4,000 Siaair Micro Pad	160	110	90	2.530	2.474	0.056	0.030	2.8	12-16
Pro	Siege™	Propel	1,000 Siaair Micro Pad	170	100	85	2.530	2.474	0.056	0.030	2.8	12-16
CFT	C•(System) v4.5™	CFT v4.5™ Reactive	Rough Buff***	160	110	95	2.608	2.555	0.053	-	5.5	12-16
CFT	C•(System) 3.5™	CFT 3.5™ Reactive	4,000 Siaair Micro Pad	170	100	95	2.570	2.520	0.050	0.017	4.4	12-16
CFT	C•(System) 2.5™	CFT 2.5™ Reactive	4,000 Siaair Micro Pad	155	105	90	2.570	2.520	0.050	0.017	4.4	12-16
High	Revolver™	ConneXion™ Grip	4,000 Siaair Micro Pad	165	105	85	2.558	2.504	0.054	-	3.8	12-16
High	Wild Card™	ConneXion Solid	2,000 Siaair Micro Pad	165	95	75	2.514	2.469	0.045	-	2.6	12-16
Advanced	Anaconda™	Activator™ Plus	Rough Buff***	155	105	70	2.464	2.511	0.047	-	2.6	10-16
Advanced	Diamondback™	Activator Solid	2,000 Siaair Micro Pad	160	100	80	2.539	2.496	0.043	-	3.5	10-16
Advanced	Python™	EnMotion™	High Gloss Polish**	115	100	70	2.522	2.480	0.042	-	3.0	10-16
Advanced	Rattler™	Activator Pearl	High Gloss Polish**	125	110	85	2.539	2.496	0.043	-	3.5	10-16
Affordable	Avalanche™ Urethane	Urethane	High Gloss Polish**	50	180	50	2.548	2.524	0.024	-	4.2	10-16
Affordable	Avalanche™ Blk/EGrn	PowrKoil 18™ Pearl	High Gloss Polish**	85	140	75	2.548	2.524	0.024	-	4.2	10-16
Affordable	Avalanche Slide	PowrKoil XD™	High Gloss Polish**	75	155	80	2.548	2.524	0.024	-	4.2	10-16
Affordable	Avalanche Solid	PowrKoil 18™ Solid	Rough Buff***	95	125	70	2.548	2.524	0.024	-	4.2	10-16
Entry level	Slingshot™	PowrKoil 17™	High Gloss Polish**	60	160	65	2.603	2.586	0.017	-	5.9	10-16
Polyester	TZone®	Polyester	High Gloss Polish**	25	235	30	2.715	2.696	0.019	-	8.7	6,8-16
Polyester	Themed	Polyester	High Gloss Polish**	25	235	30	2.715	2.696	0.019	-	8.7	6,8-16
Polyester	Viz-A-Ball®	Polyester	High Gloss Polish**	25	235	30	2.715	2.696	0.019	-	8.7	6,8,10,12,14-16

Single *not included on chart. **Evenly wet sand to a 400-grit finish, then apply Brunswick's Factory Finish "High-Gloss Polish." ***Evenly wet sand to a 220-grit finish, then apply Brunswick's Factory Finish "Rough Buff Polish."

Hook Potential: Rated on an open-ended scale, hook potential describes the relative "out of the box" hook potentials of Brunswick bowling balls. Balls with higher numbers will tend to hook more. Balls with lower numbers will tend to hook less. Bowling balls do not hook by themselves but respond to the forces a bowler applies at release. Hook potential numbers are not a numerical measurement of hooking action. Don't use the difference in hook potential numbers to try to predict the exact difference in the total amount of hook between two balls. A value of 100 is approximately equal to a strong Reactive coverstock - "Danger Zone type" ball reaction. Balls with hook potential numbers greater than 100, typically Particle coverstocks, will tend to hook more than balls with strong Reactive coverstocks. Balls with hook potential numbers less than 100 will tend to hook less than balls with strong Reactive coverstocks.

Length: Rated on an open-ended scale, length describes the relative "out of the box" length of Brunswick bowling balls. Balls with higher numbers will tend to go longer before starting to change direction. Balls with lower numbers will begin to change direction earlier. Length numbers are not a numerical measurement of length. Don't use the difference in length numbers to try to predict the exact distance between breakpoints. A value of 100 is approximately equal to a strong Reactive coverstock - "Danger Zone type" length. Balls with numbers greater than 100 will tend to go longer than a strong Reactive ball. Balls with numbers less than 100, typically Particle coverstocks, will tend to go earlier than a strong Reactive ball.

Typical Breakpoint Shape: Rated on an open-ended scale, Typical Breakpoint Shape describes the relative "out of the box" breakpoint shapes when the balls are used on lane conditions that are appropriate for that ball. For example, on medium amounts of oil, Reactive coverstock balls will tend to have a sharper breakpoint than Particle balls. If the amount of oil is significantly increased, the Reactive ball may not break on the backend at all and the Particle ball may have the sharper breakpoint. The breakpoint numbers don't guarantee a specific breakpoint shape, but indicate the typical breakpoint shape when used on appropriate lane conditions.



**"YOUR SPARE AND STRIKE BALL SHOULD HAVE
ROUGHLY THE SAME DRILLING SPECIFICATION TO
MAINTAIN A NEAR IDENTICAL FEEL FOR BOTH."**

— PARKER BOHN III —

PRO SHOP GOODS

Brunswick carries quality bowling products at exceptional savings.



321 COLOR KIT

Includes 9, 1 oz. Bottles • Blue, Red, Yellow, Silver Pearl, Gold Pearl, Purple, Green, White and Black • 160321CK



HAND BEVEL SANDER

61-860166-006



FLOOR MAT

27" X 18" • 61-860803



SPAN RULER

60-860408



CUSTOM FITTING CHART

5 pads of 50 sheets • 60-860164



NEW — BALL PLUG STARTER KIT

1/2 gallon compound and 22 oz hardener
160321SK



ULTIMA™ PRO-PLUG®

2 gallon kit • 160321UPP



ULTIMA CLEAR COMPOUND

4 x 1/2 gallon • 160321UCC



ULTIMA HARDENER

4 x 1/2 gallon • 160321UH



321 PRO-PLUG PUMP KIT

160321PK



321 COMPOUND PUMP

1 oz. • 160321CP

321 HARDENER PUMP

1/3 oz. • 160321HP



GRADUATED MIXING CUPS

50, 5 oz. cups • 160321GC



APRON

61-860804



321 FINGER PLUGGING

DAMS (100) • 160321F



321 THUMB PLUGGING

DAMS (125) • 160321T



321 STIR STICKS (500)

160321SS



BALL PLUG CUBE TRAY

160323



SIAAIR 6" MICRO FINISHING PADS- 3 PACK

240 grit • 60-105501-024
360 grit • 60-105501-036
500 grit • 60-105501-050
1,000 grit • 60-105501-100
2,000 grit • 60-105501-200
4,000 grit • 60-105501-400



BALL RING STAND

Blue • 61-860802
Clear • 61-860805



SLAT WALL BALL HOLDER

Clear • 61-860807



SLAT WALL BALL HOLDER

Clear Space Saver • 61-860599